



Selección de problemas

Estanislao Puig Ambrós



S.E.P.A.

Pedro Cañizares Cuadra

Corral de Calatrava

3-11-2016



Sociedad Española de Problemistas de Ajedrez

FUNDADA EN 1935 por Antoni F. Argüelles

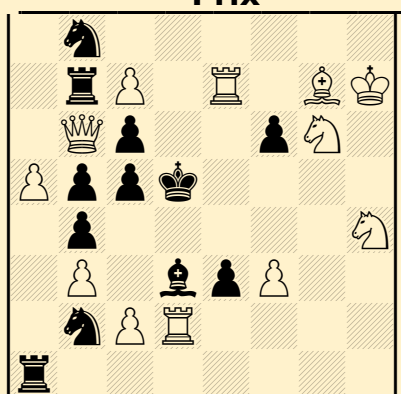
Problemista español (5.12.1911–27.2.1960), Estanislao Puig Ambrós, además de un excelente problemista (discípulo predilecto del Dr. Puig y Puig) fue un notable jugador de ajedrez. En 1936 consiguió el campeonato de primera categoría de Badalona -su ciudad de adopción- donde falleció el 27 de febrero de 1960. Había nacido en Navarcles, un pueblecito cercano a Manresa, el 5 de diciembre de 1911.

Pero, como problemista, alcanzó mayores éxitos, pues compuso cerca de 300 problemas (246 de mates en dos, 25 de mates en tres, 14 de mate de ayuda y 6 de fantasía); recibió numerosas distinciones (69) en concursos nacionales e internacionales, figurando entre ellos 7 primeros premios, 4 segundos, 7 terceros y 3 cuartos, además de 19 menciones y 29 recomendados. En 1957 fue designado Arbitro internacional para la composición.

Comenzó a componer en 1932. Desde entonces, realizó buenos problemas, sin prodigarse, y escribió para *Problemas* algunos artículos de depurada técnica.

En el ejemplo siguiente, Caballo y Torre blancos se hallan inicialmente colocados de tal modo que impiden a las Torres negras dar jaque. Cuando estas últimas se alejan para defenderse contra la amenaza, el Caballo blanco y la Torre son eximidas de sus deberes, por lo cual las desclavadas vienen a ser posibles. Esto, claro está, es un simple recurso, pero en todo caso, el tema es difícil y el presentarlo con dos casillas de fuga laterales y un sacrificio de Dama, añade distinción al problema.

Estanislao PUIG AMBROS Concurso SEPA 1946 Prix



♯3 (12+12)

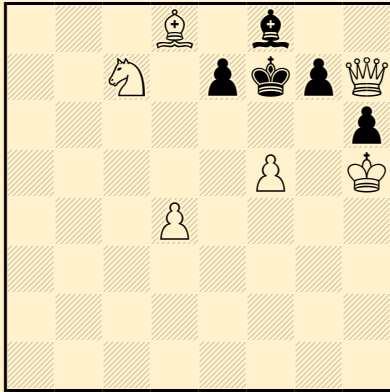
1.Af8! [2.D×c5+ R×c5 3.Td7♯]

1...Ca6 2.Td7+ Re6 3.D×c6♯

1...Cd7 2.T×d7+ Re6 3.D×c6♯

1...T×a5 2.Cf5 [3.Cf4♯]

1...T×b6 2.Te4 [3.Cf4♯]

**Estanislao PUIG AMBRO****I.T. Arbejder Skak 1954****Mention d'Honneur**

3B1b2/2N1pkpQ/7p/5P1K/3P4/8/8/8

♯2

(6+5) C+

1...Rf6 2.Dg6♯

1.Dh8! blocus

1...Rf6 2.D×f8♯

1...g~ 2.f×g6 (e.p.)♯

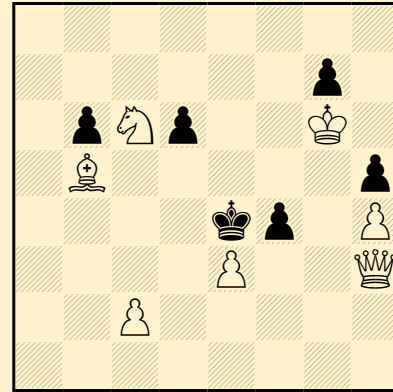
1...é~ 2.f×é6 (e.p.)♯

Mutate

Prise en passant

Déclouage direct

Exposition du Roi blanc à l'échec

Estanislao PUIG AMBROS**Mémorial A. Mari, L'Italia****Scacchistica 1954****4° Mention d'Honneur**

8/6p1/1pNp2K1/1B5p/4kp1P/4P2Q/2P5/8

♯2

(7+6) C+

1...f3 2.Dé6♯

1...d5 2.Ad3♯

1...Rd5 2.Df5♯

1.Df1! blocus

1...f3 2.Dd3♯

1...d5 2.D×f4♯

1...Rd5 2.Dç4♯

1...R×é3 2.Dé2♯

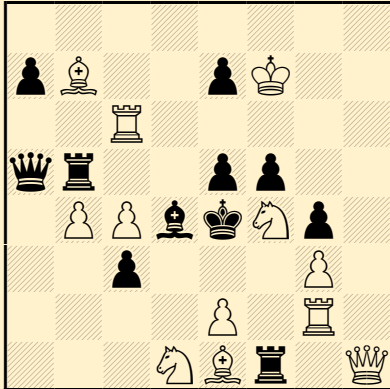
1...f×é3 2.Df5♯

Mutate

Auto-blocage

Mats (suites) changé(e)s

Clé ampliative

**Estanislao PUIG AMBROS****France - Espagne 1936****6° Place e.a.**8/pB2pK2/2R5/qr2pp2/1PPbkNp1/2p3
P1/4P1R1/3NBr1Q

≠2

(12+11) C+

1.Cé6! [2.Cg5‡]

1...Ab6 2.Tç5‡

1...Aç5 2.Tb6‡

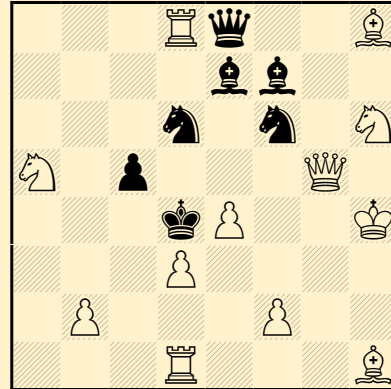
1...Ag1 2.Tf2‡

1...Af2 2.Tg1‡

1...Aé3 2.C×ç3‡

1...f4 2.Dh7‡

Barthélémy

Fermeture de ligne noire par les
Noirs**Estanislao PUIG AMBROS****Magasinet 1948****1° Prix**3Rq2B/4bb2/3n1n1N/N1p3Q1/3kP2K/
3P4/1P3P2/3R3B

≠2

(12+7) C+

1.é5! [2.Dé3‡]

1...Cf~ 2.Cf5‡

1...Cfé4 2.d×é4‡

1...Cd5 2.Cb3‡

1...Cd7 2.Cç6‡

Fermeture de ligne noire par les
Noirs

Correction noire

Somov B1

Anti-Roels

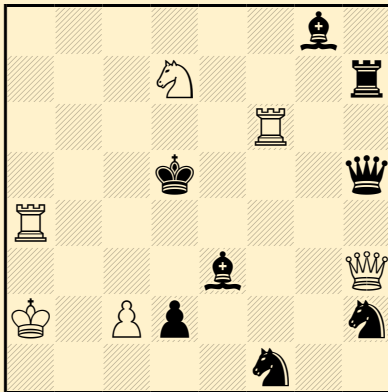
Batterie blanche

Mat par clouage

Auto-déclouage indirect

Clouage indirect

Déclouage indirect

**Antonio F. ARGUELLES****Estanislao PUIG AMBROS****Mémorial A.C. White 1952-****54****Recommandé**6b1/3N3r/5R2/3k3q/R7/4b2Q/K1Pp3n
/5n2

#2

(6+8) C+

1.Taf4! [2.ç4‡]

1...Ad4 2.Db3‡

1...A×f4 2.Dd3‡

1...Aé6 2.D×é6‡

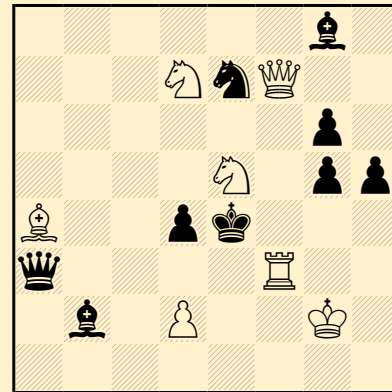
1...T×d7 2.D×h5‡

1...Dé2 2.Df5‡

Anti-dual

Clé de sacrifice

Mats miroir

Estanislao PUIG AMBROS**Els Escacs a Catalunya 1935****Recommandé**6b1/3NnQ2/6p1/4N1pp/B2pk3/q4R2/
1b1P2K1/8

#2

(7+9) C+

1.Cç6! [2.Cf6‡]

1...C×ç6 2.A×ç6‡

1...Cd5 2.D×g6‡

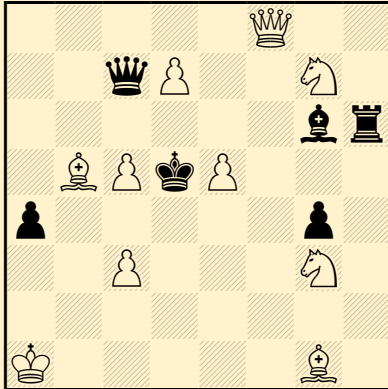
1...d3 2.Té3‡

1...Dé3 2.Cç5‡

1...Dd6 2.d3‡

1...D×f3+ 2.D×f3‡

Arguelles

**Estanislao PUIG AMBROS****Il Due Mosse 1958**

5Q2/2qP2N1/6br/1BPkP3/p5p1/2P3N1
/8/K5B1

#2 (10+6) C+

1...D×é5 2.Da8‡

1.Df4? [2.Dd4,ç4‡]

1...D×é5 2.Dç4‡

mais 1...D×ç5!

1.Df6? [2.Dé6,ç4‡]

1...D×é5 2.Dç6‡

mais 1...Ad3!

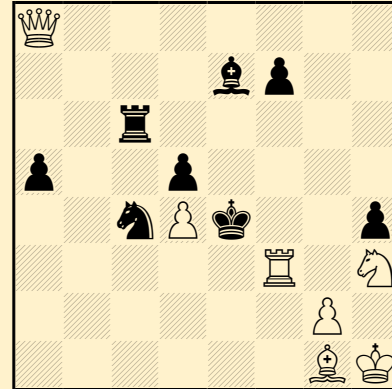
1.Df2! [2.Dd4‡]

1...D×é5 2.Da2‡

1...D×ç5 2.D×ç5‡

Mat (suite) changé(e) au moins 2 fois

Option

Estanislao PUIG AMBROS**Xadrez Brasileiro 1939**

Q7/4bp2/2r5/p2p4/2nPk2p/5R1N/6P1
/6BK

#2 (7+8) C+

1.Dh8! [2.Cf2‡]

1...Af6 2.Dh7‡

1...Tf6 2.Cg5‡

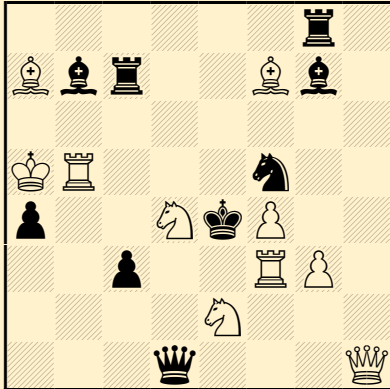
1...f6 2.D×h4‡

1...Cé5 2.D×é5‡

Défenses sur la même case

Grimshaw

Pickabish

**Estanislao PUIG AMBROS****II Due Mosse 1952****1° Mention d'Honneur**

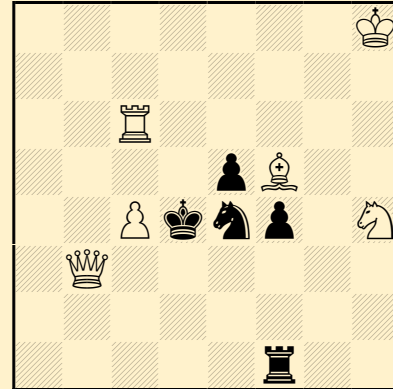
6r1/Bbr2Bb1/8/KR3n2/p2NkP2/2p2RP
1/4N3/3q3Q

≠2 (10+9) C+

1...Tç6 2.Ad5‡
1...Aç6 2.C×ç3‡

1.Cç6! [2.Té3‡]
1...Ad4,D×h1 2.Ad5‡
1...Cd4 2.C×ç3‡
1...Dd4 2.T×ç3‡

Fermeture de ligne blanche par les
Noirs
Echec double
Batterie blanche
Défenses sur la même case
Mats (suites) transféré(e)s

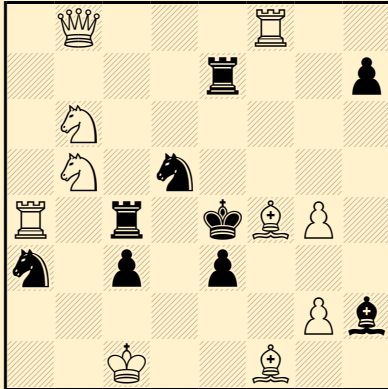
Estanislao PUIG AMBROS**II Due Mosse 1952**

7K/8/2R5/4pB2/2PknP1N/1Q6/8/5r2

≠2 (6+5) C+

1.Ah7! [2.Cf5‡]
1...C~ 2.Dd3‡
1...Cf2! 2.Cf3‡
1...Cç3! 2.Db6‡
1...Cç5! 2.Td6‡

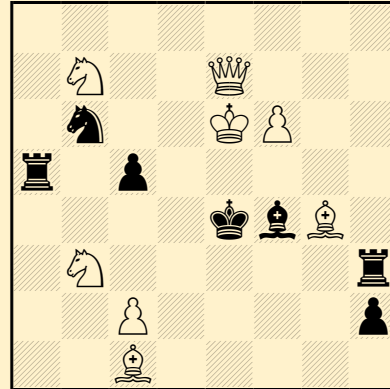
Correction noire

**Estanislao PUIG AMBROS****Il Due Mosse 1953**

1Q3R2/4r2p/1N6/1N1n4/R1r1kBP1/n1
p1p3/6Pb/2K2B2

#2 (10+9) C+

1.Dd6! [2.D×d5‡]
 1...Cd~ 2.Ad3,C×ç3,Dd3‡
 1...Cf6 2.Ad3,C×ç3‡
 1...C×f4 2.C×ç3‡
 1...Cb4 2.D×é7‡
 1...Td7 2.Dé6,Dé5‡
 1...Tf7 2.Dé5‡
 1...Té5 2.D×é5‡

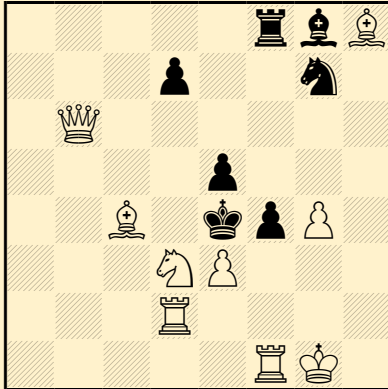
Estanislao PUIG AMBROS**Il Due Mosse 1954**

8/1N2Q3/1n2KP2/r1p5/4kbB1/1N5r/2
P4p/2B5

#2 (8+7) C-

1.Dd6! [2.D×f4‡]
 1...Té3 2.Cd2‡
 1...Tf3 2.Af5‡
 1...A×d6 2.C×d6‡
 1...A~ 2.Dé5‡
 1...Ag3 2.Dd3‡
 1...Cd5 2.D×d5‡

démoli : 1.Cd6+! A×d6 2.R×d6‡

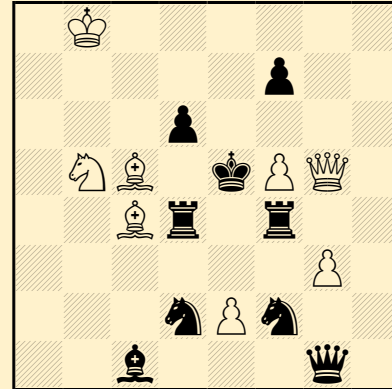
**Estanislao PUIG AMBROS****Il Due Mosse 1954**5rbB/3p2n1/1Q6/4p3/2B1kpP1/3NP3/
3R4/5RK1

#2

(9+7) C+

1...f×é3 2.Cç5‡
1...f3 2.Cf2‡**1.C×é5!** [2.Dd4‡]
1...Cé6 2.Ad5‡
1...Cf5 2.T×f4‡

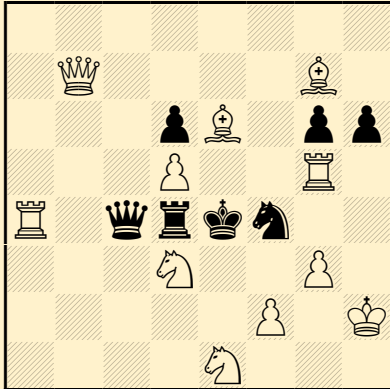
Clé ampliative

Estanislao PUIG AMBROS**Il Due Mosse 1954**1K6/5p2/3p4/1NB1kPQ1/2Br1r2/6P1/
3nPn2/2b3q1

#2

(8+9) C+

1.é4! [2.Dé7‡]
1...Cf×é4 2.g×f4‡
1...Cd×é4 2.A×d4‡
1...Tf×é4! 2.f6‡
1...Td×é4! 2.A×d6‡
1...R×é4,f6 2.D×f4‡Défenses sur la même case
Captures multiples d'une pièce
blanche
Anti-dual
Correction noire
Auto-blocage

**Estanislao PUIG AMBROS****II Due Mosse 1955-56****3° Prix**

8/1Q4B1/3pB1pp/3P2R1/R1qrkn2/3N
2P1/5P1K/4N3

#2

(11+7) C+

1.Db1! [2.Cç5‡]

1...C×d3 2.Tg4‡

1...T×d3 2.T×ç4‡

1...Dç2 2.T×d4‡

1...D×d3 2.T×d4‡

Echec double

Batterie blanche

Captures multiples d'une pièce

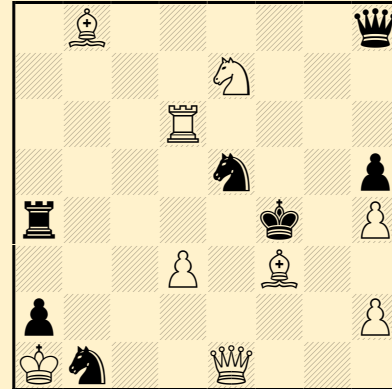
blanche

Mat par clouage

Auto-clouage direct

Auto-clouage indirect

Défenses sur la même case

Estanislao PUIG AMBROS**II Due Mosse 1956**

1B5q/4N3/3R4/4n2p/r4k1P/3P1B2/p6
P/Kn2Q3

#2

(9+7) C+

1...Cé~+ 2.Tf6‡

1...C×f3+! 2.Td4‡

1.Ag4! [2.Dg3‡]

1...Cé~+ 2.Td4‡

1...C×g4+! 2.Tf6‡

Clé give and take

Correction noire

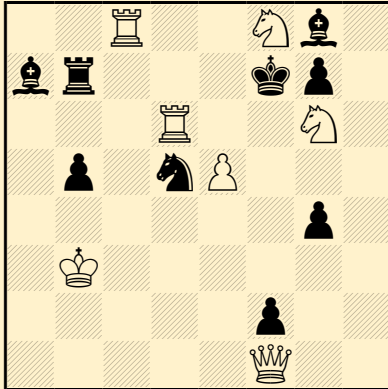
Batterie noire

Echecs croisés



Estanislao PUIG AMBROS

L'Italia Scacchistica 1950



2R2Nb1/br3kp1/3R2N1/1p1nP3/6p1/1K6/5p2/5Q2

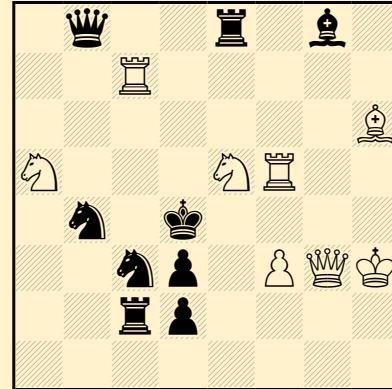
#2

(7+9) C-

1.Dg2!**démoli : 1.Ch8+!**

Estanislao PUIG AMBROS

L'Italia Scacchistica 1950



1q2r1b1/2R5/7B/N3NR2/1n1k4/2np1PQK/2rp4/8

#2

(8+9) C+

1.Dg7! [2.Céc6‡]

1...Ad5 2.Dg1‡

1...Cçd5 2.Cb3‡

1...Cbd5 2.Tç4‡

1...Rd5 2.Dd7‡

1...T×é5 2.D×é5‡

Echec double

Batterie blanche

Défenses sur la même case

Anti-dual

Auto-blocage

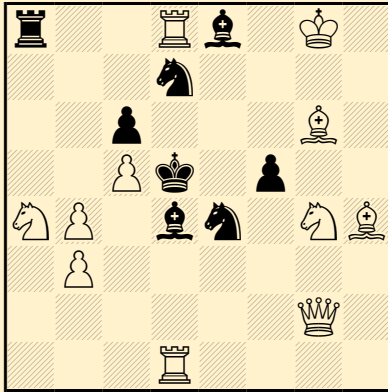
Bivalve

Ouverture de ligne noire par les

Noirs

Fermeture de ligne noire par les

Noirs

**Estanislao PUIG AMBROS****T.T. Club d'Echecs de****Manresa 1942****1° Prix**r2Rb1K1/3n4/2p3B1/2PK1p2/NP1bn1
NB/1P6/6Q1/3R4

#2

(11+8) C+

1.Dé2! [2.Dç4‡]

1...Cd6 2.Cç3‡

1...Cé×ç5 2.Dé5‡

1...Cd2 2.Cb6‡

1...Céf6+ 2.C×f6‡

1...f×g4 2.D×é4‡

1...Af7+ 2.A×f7‡

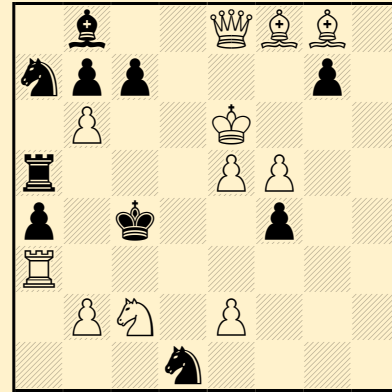
(1...Cé~ 2.Dé5,Cf6,Cç3,Cb6‡)

Echecs croisés

Mat par double clouage

Auto-déclouage indirect

Déclouage direct

Estanislao PUIG AMBROS**Schackvärlden 1939**1b2QBB1/npp3p1/1P2K3/r3PP2/p1k2
p2/R7/1PN1P3/3n4

#2

(11+10) C+

1.Td3! [2.Ca3‡]

1...Cç3 2.T×ç3‡

1...ç5 2.Ré7‡

1...a3 2.b3‡

1...T×é5+ 2.R×é5‡

1...Tç5 2.D×a4‡

1...Cb5 2.Rd7‡

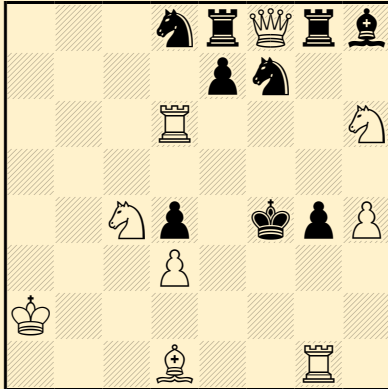
Somov B2

Auto-blocage

Umnov (défense)

Batterie royale

Batterie blanche

**Estanislao PUIG AMBROS****Arbejder Skak 1954**

3nrQrb/4pn2/3R3N/8/2Np1kpP/3P4/K
7/3B2R1

#2 (9+9) C+

1...Tg×f8,Ag7 2.T×g4‡

1...Tg7 2.T×d4‡

1...g3 2.Tf1‡

1.Cf5! [2.Tf1‡]

1...Cg5 2.T×g4‡

1...Cé5 2.T×d4‡

1...R×f5 2.Tf1‡

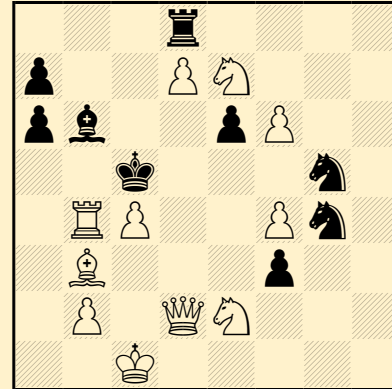
Clé de sacrifice

Déclouage indirect

Rudenko

Mats (suites) transféré(e)s

Clé ampliative

Estanislao PUIG AMBROS**Arbejder Skak 1954 (v)**

3r4/p2PN3/pb2pP2/2k3n1/1RP2Pn1/1
B3p2/1P1QN3/2K5

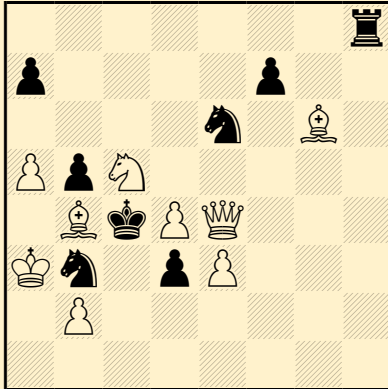
#3 (11+9) C+

1.Aa2! [2.Ta4,Tb5+]

1...Aa5 2.Cç3 [3.Ca4‡] R×b4

3.Dd6‡

1...Aç7 2.Cd4,Tb7,Tb6

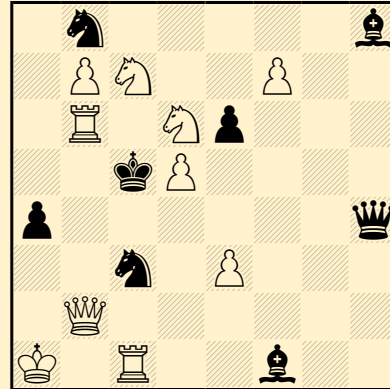
**Estanislao PUIG AMBROS****Arbejder Skak 1955**7r/p4p2/4n1B1/PpN5/1BkPQ3/Kn1pP3
/1P6/8

#2

(9+8) C+

1.Dç6! [2.A×d3‡]
 1...Cf4 2.C×b3‡
 1...Cé×ç5 2.A×f7‡
 1...Cç1 2.C×é6‡
 1...Cb×ç5 2.b3‡
 1...f×g6,f5 2.D×é6‡

Batterie blanche
 Captures réciproques
 Mat par clouage
 Auto-clouage direct
 Duel Blanc-Noir
 Mats (suites) transféré(e)s

Estanislao PUIG AMBROS**Arbejder Skak 1955**1n5b/1PN2P2/1R1Np3/2kP4/p6q/2n1P
3/1Q6/K1R2b2

#2

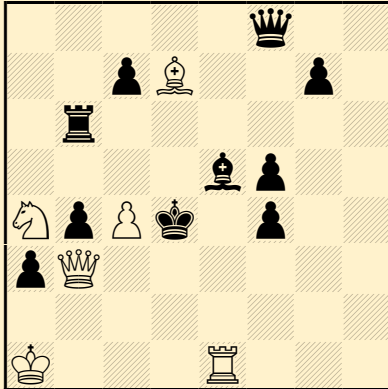
(10+8) C+

1.Cç4! [2.Db4‡]
 1...Cç~ 2.Tb5‡
 1...C×d5! 2.C×é6‡
 1...D×ç4 2.f8=D‡
 1...Ca6,Cç6 2.Tç6‡
 1...R×ç4 2.Db5‡

Auto-blocage
 Clé de sacrifice
 Mat par clouage
 Clouage indirect
 Déclouage indirect
 Promotion
 Mats (suites) transféré(e)s
 Clé ampliative



Estanislao PUIG AMBROS
Arbejder Skak 1955



5q2/2pB2p1/1r6/4bp2/NpPk1p2/pQ6/
8/K3R3

#3

(6+10) C+

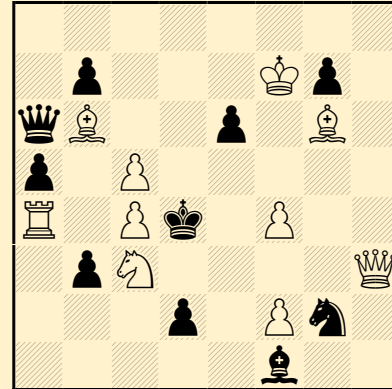
1.Ra2! [2.Td1+ R 4 3.Dd3 ]

1...f3 2.T 3 [3.Dd3 ]

1...Ad6 2.A 6 [3.Dd1 ]

1...Af6,Dd6 2.A f5

Estanislao PUIG AMBROS
El Ajedrez Espa ol 1950
3  Prix



8/1p3Kp1/qB2p1B1/p1P5/R1Pk1P2/1p
N4Q/3p1Pn1/5b2

#2

(10+10) C+

1...D c4 2.c6 

1...A c4 2.Dd3 

1...Da7,Db5 2.Cb5 

1...A 2 2.C e2 

1.D e6! [2.D 5 ]

1...D c4 2.Cb5 

1...A c4 2.C 2 

1...C f4 2.D 3 

1...R c3 2.D 5 

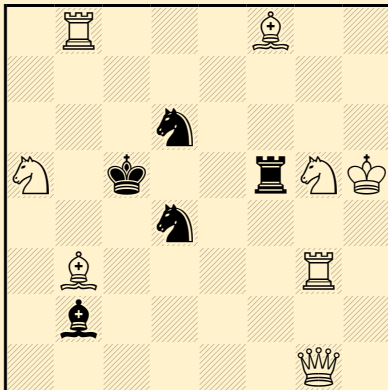
Mat par clouage

Auto-clouage direct

Clouage direct

Rukhlis

Cl  ampliative

**Estanislao PUIG AMBROS****Tijdschrift van den****Koninklijken****Nederlandschen Schaakbond****1936**

1R3B2/8/3n4/N1k2rNK/3n4/1B4R1/1b6/6Q1

#2

(8+5) C+

1.Aç4! [2.Tb5‡]

1...Tf2 2.Cé4‡

1...T×f8 2.Cé6‡

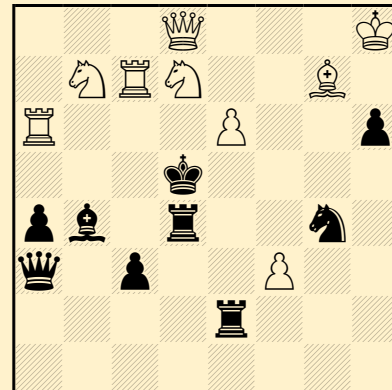
1...T×g5 + 2.T×g5‡

Moller

Mat par double clouage

Auto-déclouage indirect

Déclouage direct

Estanislao PUIG AMBROS**El Ajedrez Español 1959-60****2° Prix**

3Q3K/1NRN2B1/R3P2p/3k4/pb1r2n1/q1p2P2/4r3/8

#2

(9+9) C+

1...T×é6 2.Cb6‡

1...Tç4 2.Cdç5‡

1.Da8! [2.Cd8,Ca5‡]

1...T×é6 2.Cd6‡

1...Tç4 2.Cbç5‡

1...Cé5 2.Cf6‡

Somov B2

Auto-blocage

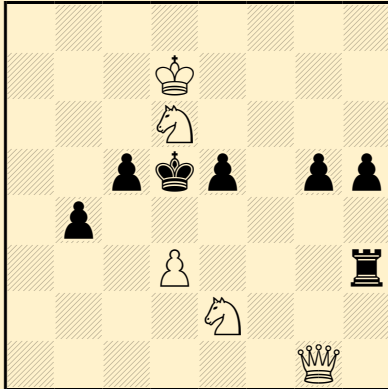
Batterie blanche

Mats (suites) changé(e)s



Estanislao PUIG AMBROS

Die Schwalbe 1955

8/3K4/3N4/2pkp1pp/1p6/3P3r/4N3/6
Q1

#2

(5+7) C+

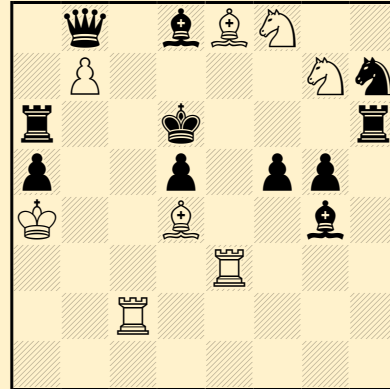
1...é4 2.D×g5‡
1...ç4 2.d×ç4‡1.Df2? [2.Df7‡]
1...é4 2.Df5‡
mais 1...Tf3!**1.Da1!** [2.Da8‡]
1...é4 2.d×é4‡
1...ç4 2.Da5‡

Mats (suites) changé(e)s

Mat (suite) changé(e) au moins 2 fois

Estanislao PUIG AMBROS

Die Schwalbe 1955

1q1bBN2/1P4Nn/r2k3r/p2p1pp1/K2B2
b1/4R3/2R5/8

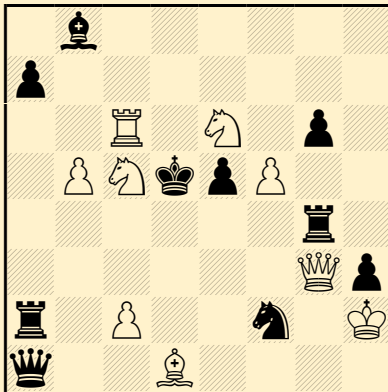
#2

(8+11) C+

1.Ad7? [2.Cé8‡]
mais 1...C×f8!**1.Ab5!** [2.Cé8‡]
1...Aé7 2.Aé5‡
1...Ab6 2.Tç6‡
1...Aç7 2.Aç5‡
1...Cf6,Af6,Té6 2.T(×)é6‡
1...Ah5 2.C×f5‡

Somov B2

Auto-blocage

**Estanislao PUIG AMBROS****Tijdschrift van den****Koninklijken****Nederlandschen Schaakbond****1955****2° Prix****Estanislao PUIG AMBROS****Die Schwalbe 1957**1b6/p7/2R1N1p1/1PNkpP2/6r1/6Qp/r
1P2n1K/q2B4

±2

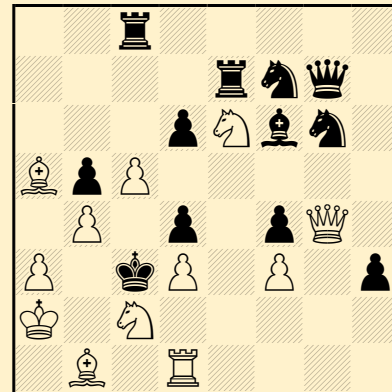
(9+10) C-

1.Cd7! [2.Cf6‡]

1...Cé4 2.Db3‡

1...é4 2.ç4, Tç5‡ (*dual*)

1...Ré4 2.Df3‡

2r5/4rnq1/3pNbn1/BpP5/1P1p1pQ1/P
1kP1P1p/K1N5/1B1R4

±3

(12+12) C-

1.Df5! [2.Dd5 [3.Db3‡]]1...Cgé5 2.C×f4, Cé×d4 (*dual*)

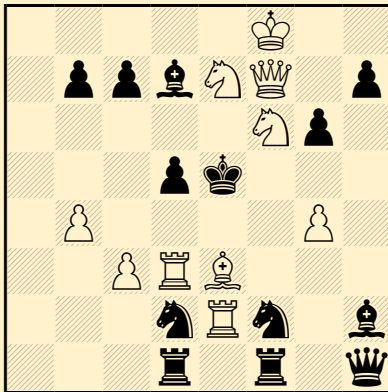
1...Aé5 2.Dé4 [3.Dé1‡]

1...Cfé5 2.Cç×d4 [3.Cé2, C×b5‡]

C×d3 3.D×d3‡

1...d×ç5, T×ç5 2.b×ç5 + b4

3.A×b4‡

**Estanislao PUIG AMBROS****Tijdschrift van den****Koninklijken****Nederlandschen Schaakbond****1937**5K2/1ppbNQ1p/5Np1/3pk3/1P4P1/2P
RB3/3nRn1b/3r1r1q

#2

(10+13) C+

1.Ch5! [2.Af4‡]

1...Dé4 2.Df6‡

1...Cfé4! 2.T×d5‡

1...Cdé4!,Ré4 2.D×d5‡

1...Rd6 2.Aç5‡

Correction noire

Anti-dual

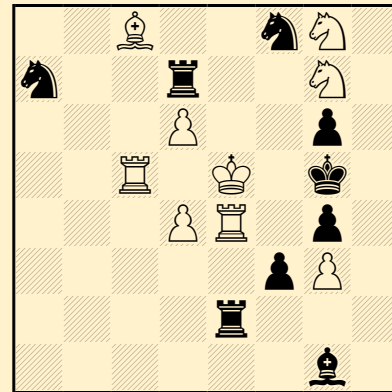
Auto-blocage

Echec double

Batterie blanche

Défenses sur la même case

Clé ampliative

Estanislao PUIG AMBROS**La Correspondencia de****Valencia 1934**2B2nN1/n2r2N1/3P2p1/2R1K1k1/3PR
1p1/5pP1/4r3/6b1

#2

(9+9) C+

1.Rd5! [2.Rç4‡]

1...Tç7,Tf7,Té7 2.T×g4‡

1...T×d6+! 2.R×d6‡

1...A×d4 2.R×d4‡

1...Cé6 2.R×é6‡

1...T×é4 2.R×é4‡

1...Cç6 2.R×ç6‡

1...Tç2 2.Té5‡

Etoile de Roi

Correction noire

Durbar

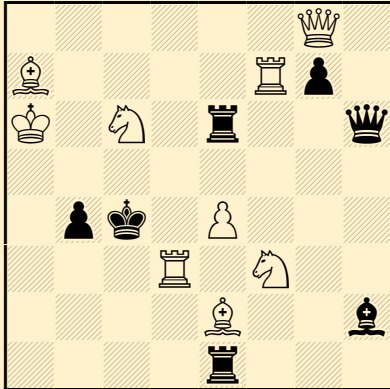
Batterie royale

Batterie blanche

Auto-clouage indirect

Auto-déclouage indirect

Déclouage direct

**Estanislao PUIG AMBROS****La Correspondencia de
Valencia 1934**6Q1/B4Rp1/K1N1r2q/8/1pk1P3/3R1N
2/4B2b/4r3

≠2

(9+7) C+

1.Tfd7! [2.T7d4‡]

1...Ad6 2.Ca5‡

1...Ag1,Aé5 2.Cf(×)é5‡

1...Df6 2.Cd2‡

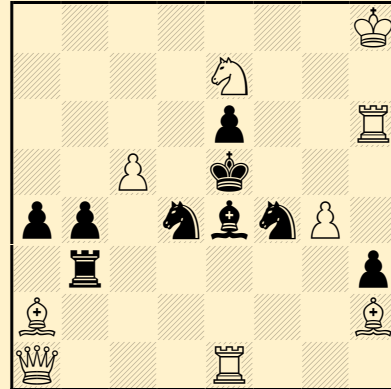
1...Dé3 2.D×é6‡

1...Ta1+ 2.Ta3‡

Batterie blanche

Mat par clouage

Clouage indirect

Estanislao PUIG AMBROS**Penya Obertura 1937**7K/4N3/4p2R/2P1k3/pp1nbnP1/1r5p/
B6B/Q3R3

≠2

(9+9) C+

1.Rg7! [2.Th5‡]

1...Tg3 2.Cç6‡

1...Té3 2.T×é6‡

1...Tç3,Tb2 2.Cg6‡

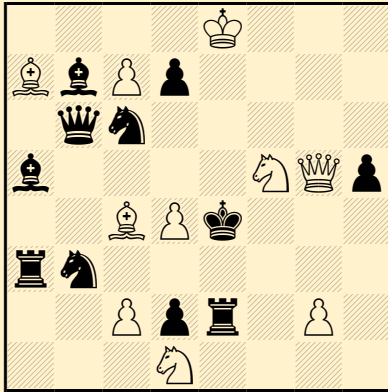
Anti-triple

Moller

Cycle de double clouage

Mat par triple clouage

Auto-déclouage indirect

**Estanislao PUIG AMBROS****T.T. Club d'Echecs de****Manresa 1942****2° Prix****Estanislao PUIG AMBROS****El Ajedrez Argentino 1956**4K3/BbPp4/1qn5/b4NQp/2BPk3/rn6/2
Ppr1P1/3N4

#2

(10+11) C+

1.Cé7! [2.Dh4‡]

1...Cç×d4 2.Ad3‡

1...Cb×d4 2.Ad5‡

1...D×d4 2.Df5‡

1...T×g2,Tf2 2.Dé3‡

1...C×é7,Cé5 2.D(×)é5‡

1...R×d4 2.Dd5‡

(1...D×ç7 2.Df5,Ad3,Ad5‡)

Clé de sacrifice

Clé ampliative

Correction noire

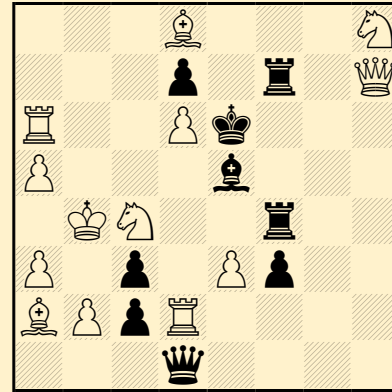
Anti-triple

Auto-blocage

Captures multiples d'une pièce

blanche

Défenses sur la même case

3B3N/3p1r1Q/R2Pk3/P3b3/1KN2r2/P1
p1Pp2/BPr4/3q4

#2

(13+9) C+

1.Dh5! [2.D×é5‡]

1...T×ç4+ 2.A×ç4‡

1...Té4 2.D×f7‡

1...T4f5 2.Cb6‡

1...T7f5 2.Dé8‡

1...A~ 2.Dd5‡

1...A×d6+ 2.Ta×d6‡

1...Ad4 2.Cé5‡

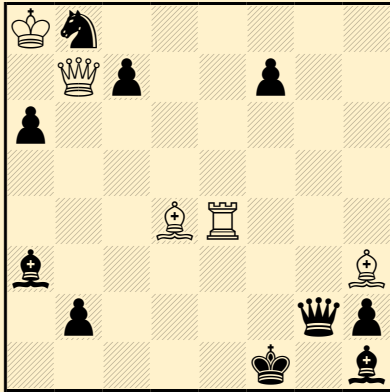
Correction noire

Anti-dual

Echecs croisés

Batterie blanche

Auto-clouage direct

**Estanislao PUIG AMBROS****Fédération Catalane des****Echecs 1936****1° Mention d'Honneur**Kn6/1Qp2p2/p7/8/3BR3/b6B/1p4qp/5
k1b

♯2

(5+10) C+

1.Té5! [2.Df3‡]

1...ç6 2.D×f7‡

1...Cç6 2.D×a6‡

1...D×h3 2.D×h1‡

Changement de pièce clouante

Heathcote

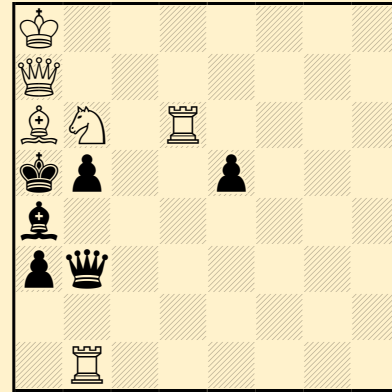
Capture d'une pièce clouante par la
pièce clouée

Mat par clouage

Auto-clouage indirect

Auto-déclouage direct

Déclouage indirect

Estanislao PUIG AMBROS**El Ajedrez Español 1944**

K7/Q7/BN1R4/kp2p3/b7/pq6/8/1R6

♯2

(6+6) C+

1.Dç7! [2.Cd5‡]

1...Dé3,Dç3,Dç2,Dç4 2.C(×)ç4‡

1...Dg8+ 2.Cç8‡

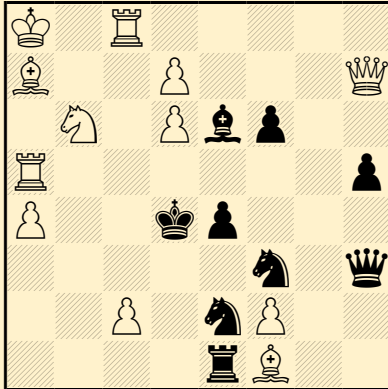
(1...Df7 2.Cç4,Cd7‡)

Anti-dual

Echec double

Batterie blanche

Clé ampliative

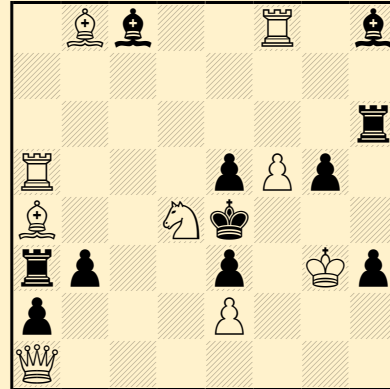
**Estanislao PUIG AMBROS****The Problemist 1958**

K1R5/B2P3Q/1N1Pbp2/R6p/P2kp3/5n
1q/2P1nP2/4rB2

#2 (12+9) C+

1.Dh6! [2.Dé3‡]
1...Cf~ 2.D×f6‡
1...Cé5 2.Cd5‡
1...Cé~ 2.ç3‡
1...Cç3 2.Cç4‡
1...Ad5+ 2.T×d5‡

Correction noire
Somov B2
Auto-blocage
Batterie blanche

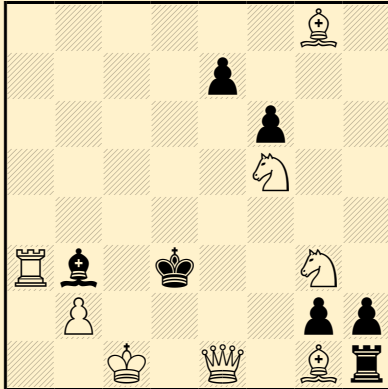
Estanislao PUIG AMBROS**Probleemblad 1957**

1Bb2R1b/8/7r/R3pPp1/B2Nk3/rp2p1K
p/p3P3/Q7

#2 (9+11) C+

1...Tf6 2.T×é5‡
1...Af6 2.Ac6‡
1.Cb5! [2.Dh1‡]
1...Tf6 2.D×é5‡
1...Af6,Rd5 2.Cd6‡

Clé ampliative
Anderssen
Batterie blanche
Mats (suites) changé(e)s
Grimshaw

**Estanislao PUIG AMBROS****Probleemblad 1958**6B1/4p3/5p2/5N2/8/Rb1k2N1/1P4pp/
2K1Q1Br

s#2

(8+7) C+

1.Aé6! blocus

1...h×g1=D,T×g1 2.Dd1+

D×d1,T×d1‡

1...h×g1=A 2.Dé3+ A×é3‡

1...h×g1=C 2.Dé2+ C×é2‡

Bristol bicolore

Mouvement Pelle

Echec double

Batterie masquée

Batterie noire

Sacrifice blanc

Captures multiples d'une pièce

blanche

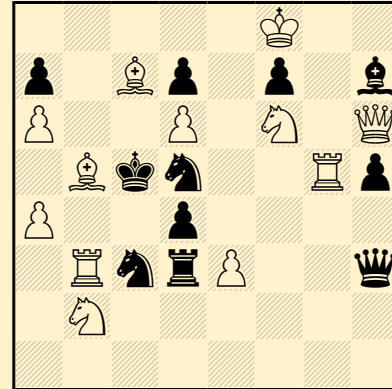
Clouage direct

Ropke

1° coups noirs sur la même case

Duel Noir-Blanc

Duel case-pièce

Estanislao PUIG AMBROS**Probleemblad 1954**5K2/p1Bp1p1b/P2P1N1Q/1Bkn2Rp/P2
p4/1RnrP2q/1N6/8

#3

(12+11) C+

1.Aa5! [2.Ab4+ Rb6 3.Cç4‡]

1...Af5 2.C×d7+ A×d7 3.C×d3‡

1...Df5 2.C×d3+ D×d3/R×d6

3.C×d7/Cé8,Cé4‡

1...C×b5 2.T×d5+ Rç6 3.a×b5‡

1...d×é3 2.T×ç3+ T×ç3/Rd4/R×d6

3.T×d5/T×d5,Tç4/Cé8,Cé4‡

Zilahi

Echange des 2° et 3° coups blancs

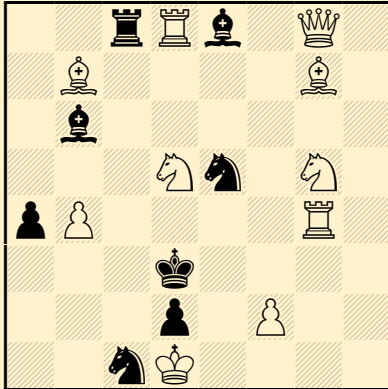
Keller (paradoxe)

Sacrifice blanc

Auto-clouage indirect

Auto-déclouage indirect

Clé ampliative

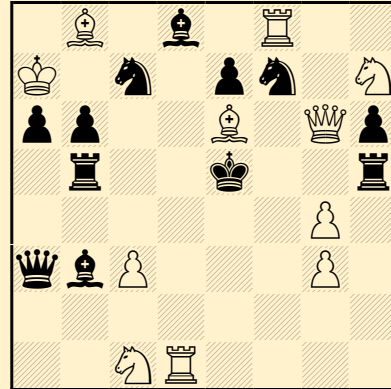
**Estanislao PUIG AMBROS****Probleemblad 1954**

2rRb1Q1/1B4B1/1b6/3Nn1N1/pP4R1/
3k4/3p1P2/2nK4

≠2 (10+8) C+

1.Cf3! [2.C×é5‡]
1...Cé~ 2.Cf4‡
1...Cç6 2.Aa6‡
1...Cf7 2.Dh7‡
1...Ad4,Aç7 2.T(×)d4‡

Correction noire
Anti-dual
Echec double
Batterie blanche
Clé de sacrifice
Captures réciproques

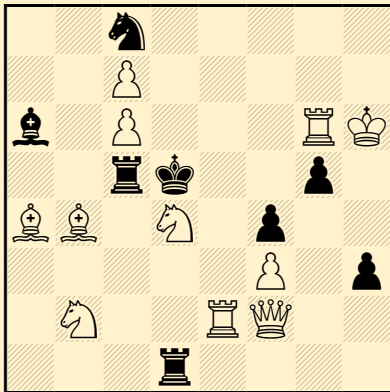
Estanislao PUIG AMBROS**Probleemblad 1953****1° Recommandé**

1B1b1R2/K1n1pn1N/pp2B1Qp/1r2k2r
/6P1/qbP3P1/8/2NR4

≠2 (11+12) C+

1...Cd6 2.Cd3‡
1...Dd6 2.Té1‡
1...Cg5 2.Df5‡
1.Ad5! [2.Dé6‡]
1...Cd6 2.Dg7‡
1...Dd6 2.Dé4‡
1...Cg5 2.Tf5‡
1...A×d5 2.Cd3‡
1...T×d5 2.Té1‡

Anti-dual
Somov B2
Auto-blocage
Quasi-sacrifice blanc
Mat par clouage
Auto-déclouage indirect
Rukhlis

**Estanislao PUIG AMBROS****Jubilé Nederlandse Bond****van Probleemvrienden-30,****Probleemblad 1952****3° Mention d'Honneur**2n5/2P5/b1P3RK/2rk2p1/BB1N1p2/5P
1p/1N2RQ2/3r4

#2

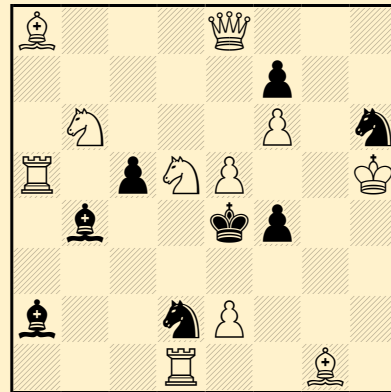
(11+8) C+

1.Cç2! [2.D×ç5‡]
 1...Tç4, T×ç2, Tç3, Ta5 2.T×g5‡
 1...Tb5 2.Ab3‡
 1...Td4 2.D×d4‡
 1...T×ç6 2.A×ç6‡

Correction noire

Anti-dual

Quasi-sacrifice blanc

Estanislao PUIG AMBROS**Els Escacs a Catalunya 1935****3° Mention d'Honneur**B3Q3/5p2/1N3P1n/R1pNP2K/1b2kp2/
8/b2nP3/3R2B1

#2

(11+8) C+

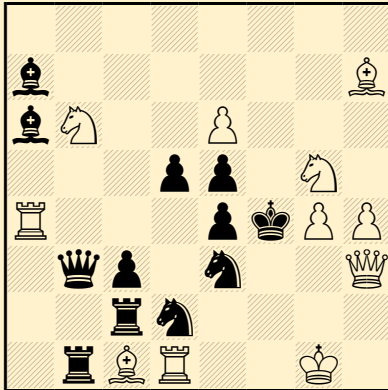
1.Cç8! [2.Cd6‡]
 1...ç4 2.Cé7‡
 1...Cç4 2.Cé3‡
 1...Cf5 2.Cç3‡

Somov B1

Anti-Levman

Echec double

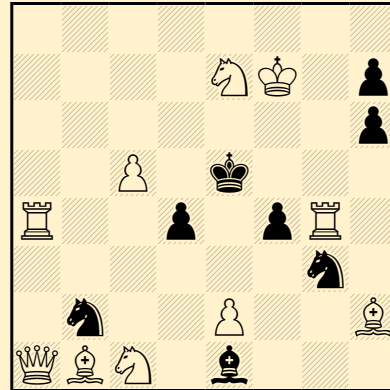
Batterie blanche

**Estanislao PUIG AMBROS****6° T.T. Sociedad Española de
Problemistas de Ajedrez****1945-46****1° Prix**8/b6B/bN2P3/3pp1N1/R3pkPP/1qp1n
2Q/2rn4/1rBR2K1

#2 (11+12) C+

1.Af5! [2.Dh2‡]
1...Cd~,Cé~ 2.Df3‡
1...Cdç4 2.C×d5‡
1...Céc4 2.Tf1‡

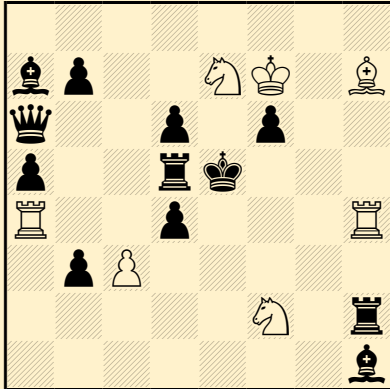
Correction noire
Anti-dual
Demi-clouage noir
Martin
Hess
Clé de sacrifice
Mat par double clouage
Auto-déclouage indirect
Clouage indirect

Estanislao PUIG AMBROS**Limburgsch Dagblad 1937**8/4NK1p/7p/2P1k3/R2p1pR1/6n1/1n2
P2B/QBN1b3

#2 (10+8) C+

1.é4! [2.Cç6‡]
1...d×é3 e.p. 2.Cd3‡
1...f×é3 e.p. 2.Té4‡
1...Cd3 2.D×d4‡
1...C×é4 2.A×f4‡

Pape
Somov B1
Captures multiples d'une pièce
blanche
Mat par clouage
Auto-clouage indirect
Prise en passant

**Estanislao PUIG AMBROS****Limburgsch Dagblad 1938**

8/bp2NK1B/q2p1p2/p2rk3/R2p3R/1pP
5/5N1r/7b

#2 (7+12) C+

1.Ab1! [2.Cg6‡]

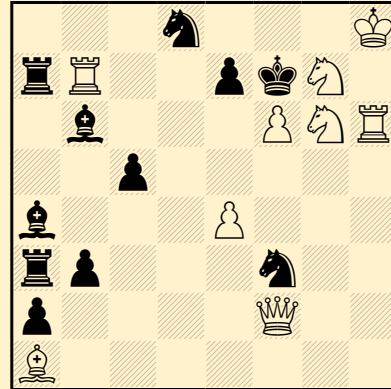
1...Aé4, Tg2 2.T(×)é4‡

1...Tb5, Dd3 2.C(×)d3‡

1...Tç5 2.ç×d4‡

1...d3 2.Cg4‡

Somov B1

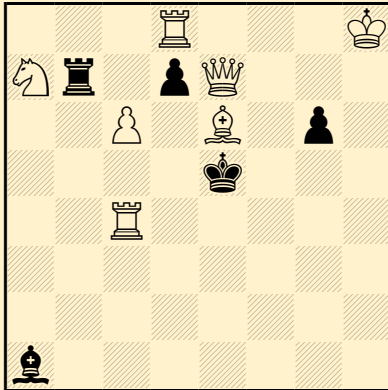
Estanislao PUIG AMBROS**Problemas 1950**

3n3K/rR2pkN1/1b3PNR/2p5/b3P3/rp3
n2/p4Q2/B7

#2 (9+11) C+

1.f×é7!

[2.Cé5, D×f3, é×d8=C, é8=D‡]

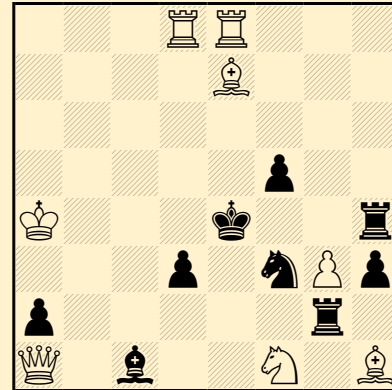
**Estanislao PUIG AMBROS****5° T.T. Sociedad Española de
Problemistas de Ajedrez
1944-45****Hautement Recommandé**3R3K/Nr1pQ3/2P1B1p1/4k3/2R5/8/8/
b7

#2

(7+5) C+

1.Tf8! [2.Ag8‡]
 1...d6 2.Df6‡
 1...d5 2.Ad7‡
 1...d×ç6 2.C×ç6‡
 1...d×é6 2.Dç5‡

Pickaninny
 Auto-blocage
 Batterie blanche

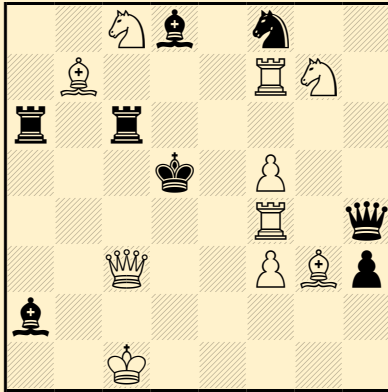
Estanislao PUIG AMBROS
**Sociedad Española de
Problemistas de Ajedrez
1936**3RR3/4B3/8/5p2/K3k2r/3p1nPp/p5r1/
Q1b2N1B

#2

(8+9) C+

1.D×a2! [2.Dd5‡]
 1...T×a2+ 2.Aa3‡
 1...T×g3 2.Ag5‡
 1...Ré5+ 2.A×h4‡

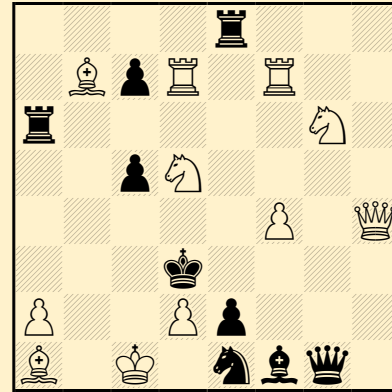
Anti-dual
 Echecs croisés
 Batterie royale
 Batterie noire
 Batterie blanche
 Clé de sacrifice
 Mat par clouage
 Auto-clouage indirect
 Clé ampliative
 Exposition du Roi blanc à l'échec

**Estanislao PUIG AMBROS****La Correspondencia de
Valencia 1934**2Nb1n2/1B3RN1/r1r5/3k1P2/5R1q/2Q
2PBp/b7/2K5

♯2 (10+8) C+

1.Cé6! [2.Dç5‡]
 1...C×é6,Cd7 2.T(×)d7‡
 1...Aç4 2.Dd4‡
 1...Ab6,Ta5 2.A×ç6‡
 1...Aé7 2.Cç7‡
 1...D×f4+ 2.C×f4‡
 1...Dé7 2.Td4‡

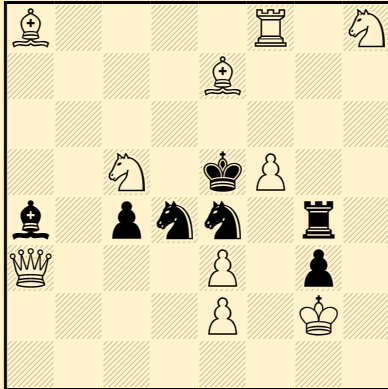
Mouvement Pelle
 Clé de sacrifice
 Mat par clouage
 Auto-déclouage indirect

Estanislao PUIG AMBROS**in memoriam G. Kunos****Rakéta 1941-II****4° Mention d'Honneur**4r3/1BpR1R2/r5N1/2pN4/5P1Q/3k4/P
2Pp3/B1K1nbq1

♯2 (11+9) C+

1.Dh7! [2.Cé5‡]
 1...T×g6 2.Cé3‡
 1...D×g6 2.Cb6‡
 1...Rç4 2.A×a6‡
 1...Ré4 2.Cç3‡

Echec double
 Batterie blanche
 Mat par clouage
 Auto-clouage direct

**Estanislao PUIG AMBROS****France - Espagne 1936**

B4R1N/4B3/8/2N1kP2/b1pnn1r1/Q3P
1p1/4P1K1/8

#2 (10+7) C+

1.Dd3! [2.D×d4‡]

1...Cd~ 2.Dd5‡

1...Cç6 2.Cd7‡

1...Cé~ 2.Cf7‡

1...Cg5 2.Cg6‡

1...Cd6 2.Af6‡

1...ç×d3 2.C×d3‡

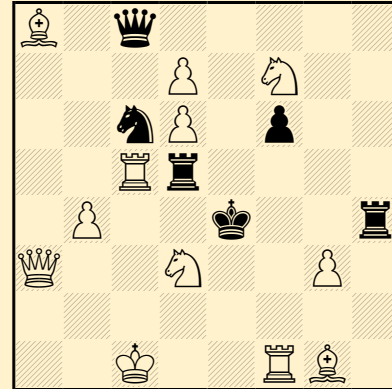
(1...C×f5 2.Cf7,Dd5‡

1...Cb5 2.Cd7,Dd5‡)

Correction noire

Somov B1

Clé de sacrifice

Estanislao PUIG AMBROS**Els Escacs a Catalunya 1936**

B1q5/3P1N2/2nP1p2/2Rr4/1P2k2r/Q2
N2P1/8/2K2RB1

#2 (12+6) C+

1.Db3! [2.D×d5‡]

1...C×b4,Cé7,Té5,Tf5,Tg5,Tdh5

2.Dç4‡

1...Cd4 2.A×d5‡

1...Thh5 2.Tf4‡

1...T×d3 2.Dé6‡

1...Td4 2.Cf2‡

1...T×ç5 + 2.C×ç5‡

1...T×d6 2.C×d6‡

Croix de Tour

Correction noire

Anti-dual

Demi-clouage noir

Somov B2

Auto-blocage

Somov B1

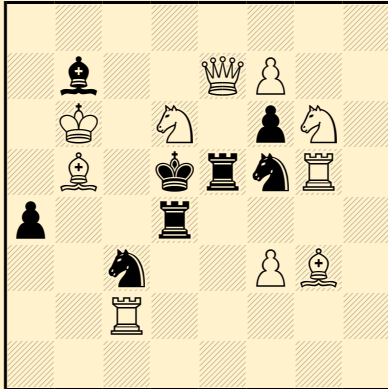
Cumul Somov

Captures réciproques

Mat par clouage

Auto-déclouage indirect

Clouage indirect

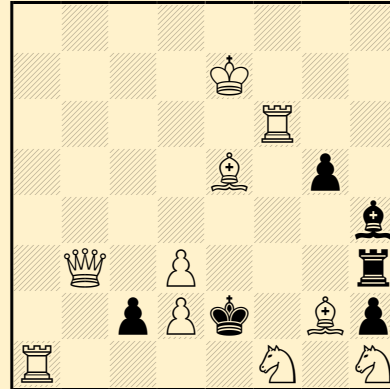
**Estanislao PUIG AMBROS****Els Escacs a Catalunya 1934**

8/1b2QP2/1K1N1pN1/1B1krnR1/p2r4/
2n2PB1/2R5/8

#2 (10+8) C+

1.Dd7! [2.C×f5‡]
1...Cé4 2.Cf4‡
1...C×b5 2.Tç5‡
1...C×d6,Té7 2.C(×)é7‡
1...Aç6,Aç8 2.A(×)ç6‡
1...Té6 2.D×b7‡

Correction noire
Demi-clouage noir
Batterie blanche
Captures réciproques
Mat par clouage

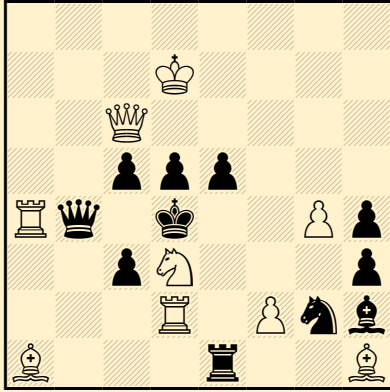
Estanislao PUIG AMBROS**Problem 1956**

8/4K3/5R2/4B1p1/7b/1Q1P3r/2pPk1B
p/R4N1N

#2 (10+6) C+

1.Ag3! [2.Af3,Té1,Tf2,Té6‡]
1...A×g3 2.Af3‡
1...T×g3 2.Tf2‡
1...ç1=~ 2.Té6‡
1...g4 2.Té1‡

Fleck
Clé de sacrifice
Promotion

**Estanislao PUIG AMBROS****Limburgsch Dagblad 1938**

8/3K4/2Q5/2ppp3/Rq1k2Pp/2pN3p/3R1Pnb/B3r2B

#2

(9+11) C+

1.Rd6! [2.D×d5‡]

1...ç4+ 2.Cç5‡

1...é4+ 2.Cé5‡

1...Cf4 2.D×ç5‡

1...Rç4 2.T×b4‡

(1...Cé3 2.C×é5,D×ç5‡)

Anti-dual

Echecs croisés

Somov B2

Auto-blocage

Umnov

Batterie noire

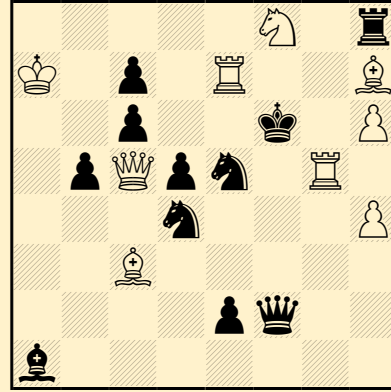
Batterie blanche

Mat par clouage

Auto-clouage direct

Auto-déclouage indirect

Exposition du Roi blanc à l'échec

Estanislao PUIG AMBROS**British Chess Federation****1945****Recommandé**

5N1r/K1p1R2B/2p2k1P/1pQpn1R1/3n3P/2B5/4pq2/b7

#2

(9+11) C+

1...Cg6,Cç2,Cb3 2.Cd7‡

1.Tég7! [2.Dé7‡]

1...Cg6 2.D×ç6‡

1...Cd~ 2.D×f2‡

1...Cdf3 2.Tf5‡

1...Cf5 2.T5g6‡

1...Cé6 2.Cd7‡

1...Cf7 2.T7g6‡

Correction noire du 3° degré

Cristoffanini

Capture d'une pièce clouante par la

pièce clouée

Demi-clouage noir

Martin

Somov B2

Anti-Roels

Auto-blocage

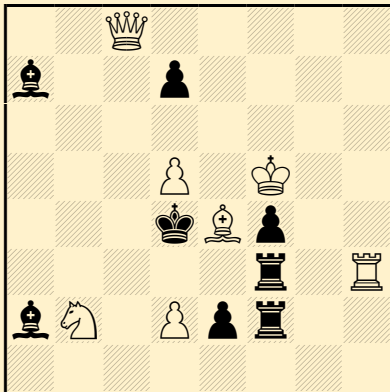
Mat par clouage

Auto-déclouage direct

Clouage indirect



Estanislao PUIG AMBROS
Tijdschrift van den
Koninklijken
Nederlandschen Schaakbond
1955



2Q5/b2p4/8/3P1K2/3kBP2/5r1R/bN1P
pr2/8

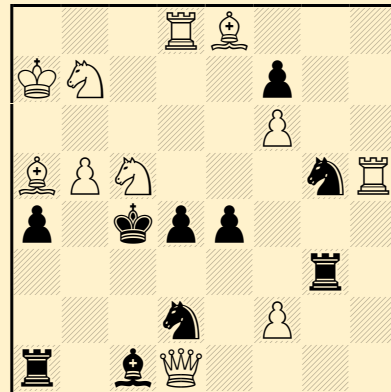
±2 (7+8) C+

1...Aç4 2.D×ç4‡
 1...Aç5 2.Dh8‡

1.Cd3! [2..Dç3‡]
 1...Aç4 2.Dh8‡
 1...Aç5 2.D×ç5‡
 1...T×d3 2.T×d3‡

Bristol bicolore
 Bikos
 Clé de sacrifice
 Mats (suites) changé(e)s

Estanislao PUIG AMBROS
Tijdschrift van den
Koninklijken
Nederlandschen Schaakbond
1938
1° Recommandé

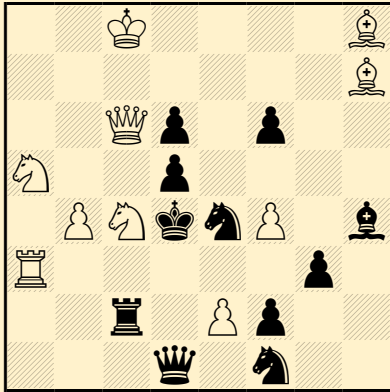


3RB3/KN3p2/5P2/BPN3nR/p1kpp3/6r
1/3n1P2/r1bQ4

±2 (11+10) C+

1.Cd7! [2..Cé5‡]
 1...Cdf3 2.Cb6‡
 1...Cgf3 2.Dç2‡
 1...Rd5 2.A×f7‡

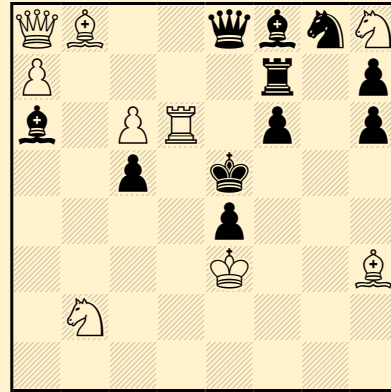
Mat par clouage
 Clé 3×ampliative

**Estanislao PUIG AMBROS****South African Chess****Magazine 1936****Recommandé**2K4B/7B/2Qp1p2/N2p4/1PNknP1b/R5
p1/2r1Pp2/3q1n2

#2 (10+11) C+

1.Cé3! [2.Cf5♯]
 1...Cç3 2.Db6♯
 1...Cç5 2.D×d5♯
 1...C×é3 2.Cb3♯
 1...Céd2 2.Td3♯
 1...Cg5 2.A×f6♯
 1...T×ç6+ 2.C×ç6♯

Anti-dual
 Anti-Somov A2
 Roels
 Somov B2
 Quasi-sacrifice blanc
 Auto-clouage indirect
 Déclouage indirect
 Exposition du Roi blanc à l'échec

Estanislao PUIG AMBROS**Els Escacs a Catalunya 1933**QB2qbnN/P4r1p/b1PR1p1p/2p1k3/4p
3/4K2B/1N6/8

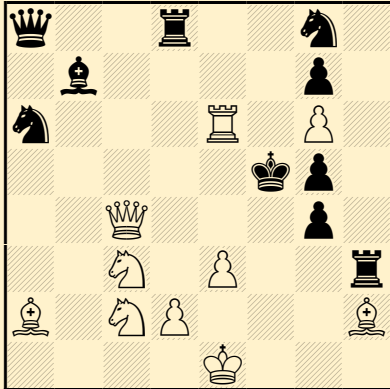
#2 (9+11) C+

1.ç7! [2.Td5,Dd5♯]
 1...Dç6 2.C×f7♯
 1...Dé6,Cé7 2.T(×)é6♯
 1...Aç4,Ab7 2.C(×)ç4♯
 1...A×d6 2.D×é4♯
 1...R×d6 2.ç8=C♯

Correction noire
 Anti-dual
 Echec double
 Anderssen
 Batterie blanche
 Promotion
 Clé ampliative



Francisco ARMENGOL
Estanislao PUIG AMBROS
Els Escacs a Catalunya 1930



q2r2n1/1b4p1/n3R1P1/5kp1/2Q3p1/2
 N1P2r/B1NP3B/4K3

≠2 (10+10) C+

1...Ad5 2.Cd4‡

1...Td5 2.Dé4‡

1.Cd5! [2.Cd4,Dé4‡]

1...Cf6 2.Cé7‡

1...T×é3+ 2.Cd×é3‡

1...R×é6 2.D×g4‡

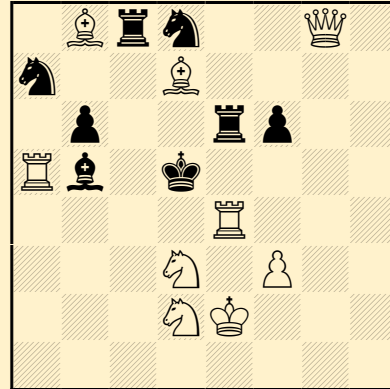
Rudenko

Clé ampliative

Novotny

Grimshaw

Estanislao PUIG AMBROS
La Correspondencia de
Valencia 1934



1Brn2Q1/n2B4/1p2rp2/Rb1k4/4R3/3N
 1P2/3NK3/8

≠2 (9+8) C+

1.Dg1! [2.Dd4‡]

1...Caç6 2.T×b5‡

1...Cdç6 2.A×é6‡

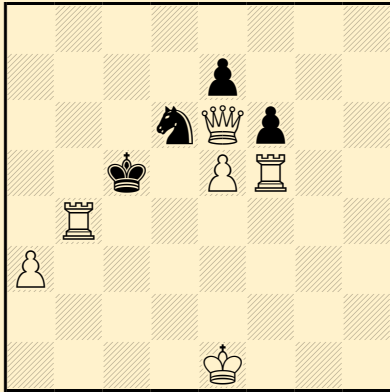
1...T×é4+ 2.f×é4‡

1...Tç4 2.Cf4‡

Auto-déclouage indirect

Déclouage direct

Exposition du Roi blanc à l'échec

**Estanislao PUIG AMBROS****Sociedad Española de
Problemistas de Ajedrez
1944**

8/4p3/3nQp2/2k1PR2/1R6/P7/8/4K3

♯2

(6+4) C+

1.Dd7! blocus

1...Cb5,C×f5,Cf7 2.D(×)b5‡

1...Cç4 2.Tb5‡

1...Rd5 2.é6‡

1...é6 2.D×d6‡

1...f×é5 2.T×é5‡

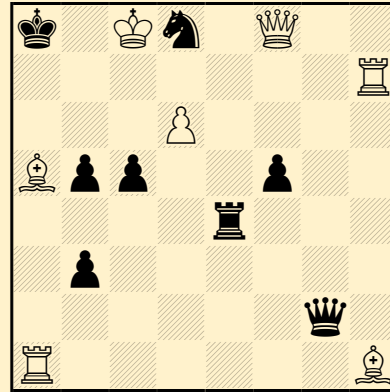
(1...C~ 2.Db5,é6‡)

Correction noire

Batterie blanche

Mat par clouage

Clé give and take

Estanislao PUIG AMBROS**The Problemist 1940**k1Kn1Q2/7R/3P4/Bpp2p2/4r3/1p6/6q
1/R6B

♯2

(7+8) C+

1.Dé7! [2.Da7‡]

1...T×é7 2.Aç7‡

1...Dg7 2.Aç3‡

1...Cç6,Cb7,Cf7 2.D(×)b7‡

Anti-dual

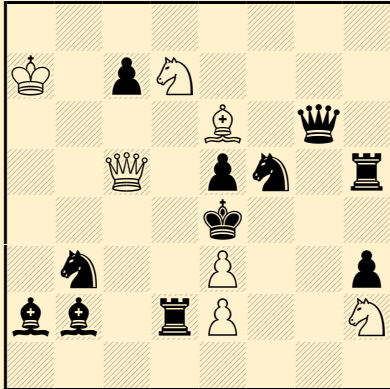
Demi-clouage noir

Ajec

Batterie blanche

Clé de sacrifice

Mat par clouage

**Estanislao PUIG AMBROS****El Ajedrez Español 1953****2º Mention d'Honneur**8/K1pN4/4B1q1/2Q1pn1r/4k3/1n2P2p
/bb1rP2N/8

#2

(7+11) C+

1.Cg4! [2.Cf2‡]

1...Cbd4,Td4 2.D×é5‡

1...Cfd4,T×é2 2.Dd5‡

1...Ad4 2.Ad5‡

1...C×ç5 2.C×ç5‡

1...C×é3 2.D×é3‡

1...D×g4 2.Cf6‡

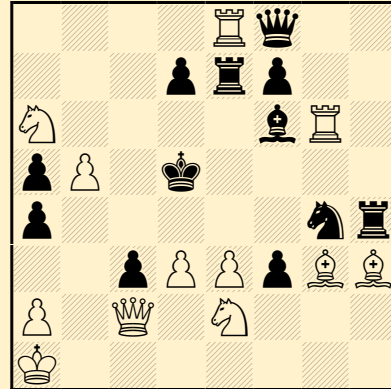
Feldmann 1

Anti-dual

Clé de sacrifice

Défenses sur la même case

Grimshaw

Estanislao PUIG AMBROS**Arbeidermagasinet 1939**4Rq2/3prp2/N4bR1/pP1k4/p5nr/2pPP
pBB/P1Q1N3/K7

#2

(12+12) C+

1.D×ç3! [2.Cç7‡]

1...Aé5 2.é4‡

1...Té5 2.Dd4‡

1...Cé5 2.Dç5‡

1...A×ç3+ 2.C×ç3‡

1...Ré6 2.Dé5‡

1...d6 2.Cf4‡

Correction noire

Anti-dual

Mouvement Pelle

Somov B2

Clé de sacrifice

Mat par double clouage

Mats miroir

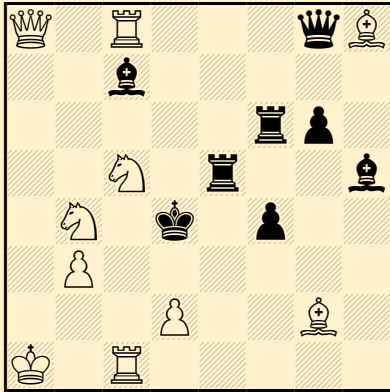
Auto-clouage direct

Déclouage indirect

Défenses sur la même case

Exposition du Roi blanc à l'échec

Grimshaw

**Estanislao PUIG AMBROS****T.T. British Chess Federation****1941-42****Recommandé****Estanislao PUIG AMBROS****El Ajedrez Español 1935**

Q1R3qB/2b5/5rp1/2N1r2b/1N1k1p2/1P6/3P2B1/K1R5

#2

(10+8) C+

1.Rb1! [2.Da1‡]

1...Aa5 2.Cç2‡

1...Té3 2.Cç6‡

1...T×ç5,Ta6 2.Dé4‡

1...D×b3+ 2.C×b3‡

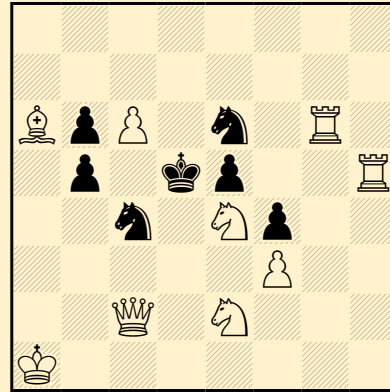
1...Dç4 2.T×ç4‡

Correction noire

Demi-clouage noir

Somov B1

Mat par clouage



8/8/BpP1n1R1/1p1kp2R/2n1Np2/5P2/2Q1N3/K7

#2

(9+7) C+

1.Th7! blocus

1...Cç~ 2.Td7‡

1...Cd6 2.Cf6‡

1...Cé~ 2.Dd3‡

1...Cd4 2.C2ç3‡

1...Cç5 2.C4ç3‡

1...R×ç6 2.Ab7‡

1...b4 2.D×ç4‡

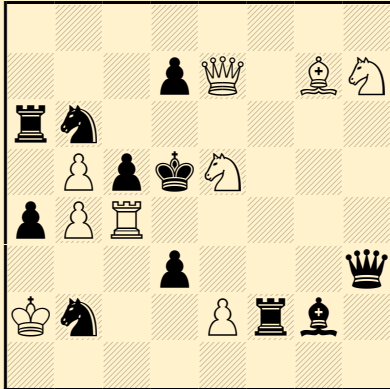
Correction noire

Auto-blocage

Déclouage direct



Estanislao PUIG AMBROS
El Ajedrez Español 1952



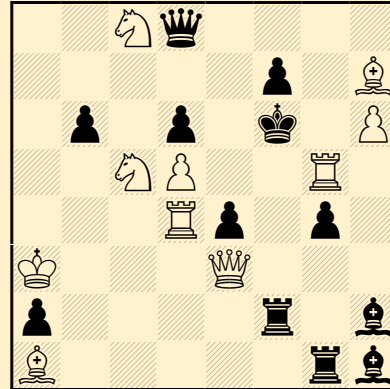
8/3pQ1BN/rn6/1PpkN3/pPR5/3p3q/Kn
2Prb1/8

≠2 (9+11) C+

1.Cf3! [2.T×ç5‡]
1...C2×ç4 2.Cf6‡
1...C6×ç4 2.é4‡
1...Dé6,R×ç4 2.D×ç5‡
1...d6 2.Dé4‡

Anti-dual
Auto-blocage
Captures multiples d'une pièce
blanche
Défenses sur la même case
Clé ampliative

Estanislao PUIG AMBROS
T.T. Jornal de Xadrez 1946
4° Recommandé

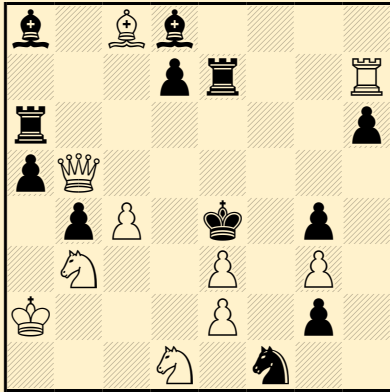


2Nq4/5p1B/1p1p1k1P/2NP2R1/3Rp1p
1/K3Q3/p4r1b/B5rb

≠2 (10+12) C+

1.Th5! [2.Dg5‡]
1...Af4,Tf5 2.T(×)f5‡
1...Tf4 2.Td1‡
1...Tg3 2.Td2‡
1...Tf3 2.C×é4‡
1...Dg8 2.Cd7‡

Batterie blanche
Clouage direct
Grimshaw

**Estanislao PUIG AMBROS****El Ajedrez Español 1935**

b1Bb4/3pr2R/r6p/pQ6/1pP1k1p1/1N2
P1P1/K3P1p1/3N1n2

#2

(10+12) C+

1.Dh5! [2.Cc5‡]

1...C×é3 2.Cf2‡

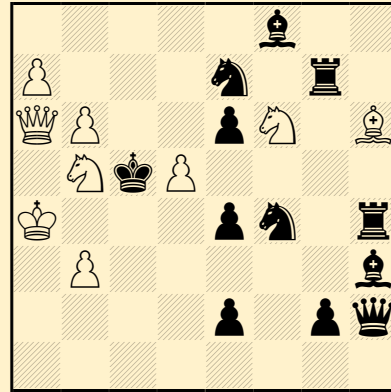
1...Ab6 2.T×é7‡

1...Tç6 2.Dd5‡

1...Té5 2.D×g4‡

1...d6 2.Df5‡

Auto-blocage

Estanislao PUIG AMBROS**Sociedad Española de****Problemistas de Ajedrez****1942**

5b2/P3n1r1/QP2pN1B/1NkP4/K3pn1r/
1P5b/4p1pq/8

#2

(9+12) C+

1.b7! [2.Dd6‡]

1...Cf~ 2.Aé3‡

1...Cf×d5 2.Cd7‡

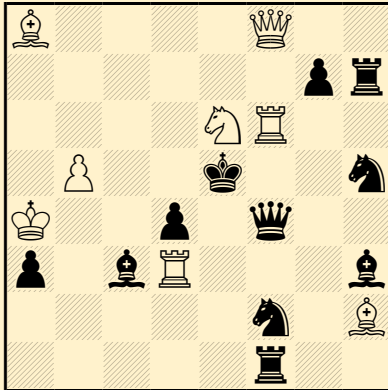
1...Cé~ 2.Dç6‡

1...Cé×d5 2.C×é4‡

Correction noire

Anti-dual

Auto-blocage

**Estanislao PUIG AMBROS****après Mariano GAMBIN****Sociedad Española de
Problemistas de Ajedrez
1943**B4Q2/6pr/4NR2/1P2k2n/K2p1q2/p1b
R3b/5n1B/5r2

#2

(8+11) C+

1.C×d4! [2.Dd6‡]
 1...C×f6 2.Db8‡
 1...g×f6 2.Dç5‡
 1...Cé4 2.Cç6‡
 1...Ab4 2.Cf3‡
 1...Aé6 2.T×é6‡

Correction noire

Anti-dual

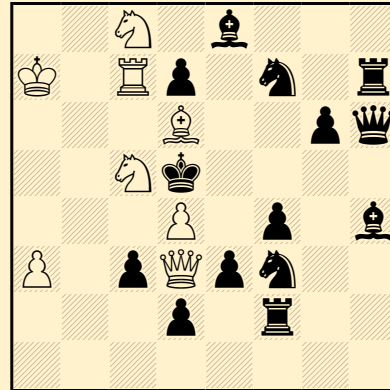
Somov B2

Auto-blocage

Mat par clouage

Auto-clouage direct

Déclouage indirect

Estanislao PUIG AMBROS**Problemas 1954 (v)****Recommandé**2N1b3/K1Rp1n1r/3B2pq/2Nk4/3P1p1
b/P1pQpn2/3p1r2/8

#3

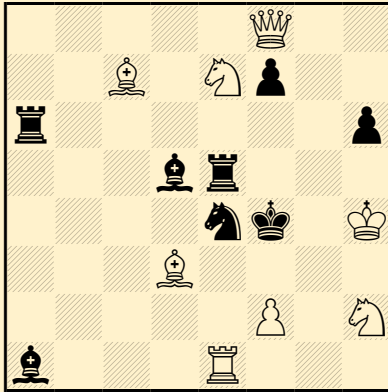
(8+14) C+

1.Ra6! [2.Dé4+ Rç4 3.Cb6‡]
 1...C3g5 2.Aé7 [3.Cb6‡]
 1...C7g5 2.A×f4 [3.Cb6‡] Cé5
 3.d×é5‡
 1...ç2 2.Db3+ R×d4 3.Dd3‡

Switchback blanc

Switchback de Dame

Batterie blanche

**Estanislao PUIG AMBROS****To Mat 1955****Hautement Recommandé**5Q2/2B1Np2/r6p/3br3/4nk1K/3B4/5P
1N/b3R3

♯2

(8+8) C+

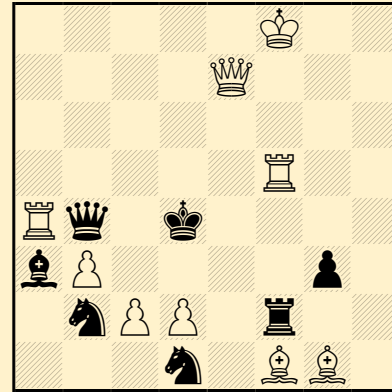
1.Té3! [2.Tf3♯]
 1...C~ 2.C×d5♯
 1...Cç3 2.A×é5♯
 1...Cd6 2.Cg6♯
 1...Cf6 2.D×h6♯

Correction noire

Anti-dual

Mat par clouage

Auto-déclouage indirect

Julio PERIS PARDO**Estanislao PUIG AMBROS****T.T. Pat 1938****8° Mention d'Honneur**5K2/4Q3/8/5R2/Rq1k4/bP4p1/1nPP1r
2/3n1BB1

♯2

(9+7) C+

1.Ag2! [2.Tf4,Dç5,Dd6♯]
 1...Cd~ 2.Dç5♯
 1...Cb~,D×a4,Dç4 2.Tf4♯
 1...Cd3 2.Dd6♯

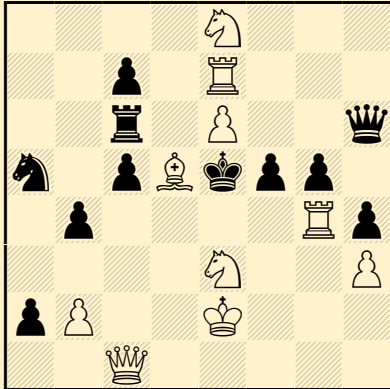
Changement de pièce clouante

Capture d'une pièce clouante par la
pièce clouée

Mat par clouage

Auto-déclouage indirect

Fleck

**Estanislao PUIG AMBROS****Problemas 1957 (v)****1° Prix**

4N3/2p1R3/2r1P2q/n1pBkpp1/1p4Rp/
4N2P/pP2K3/2Q5

#3

(10+11) C+

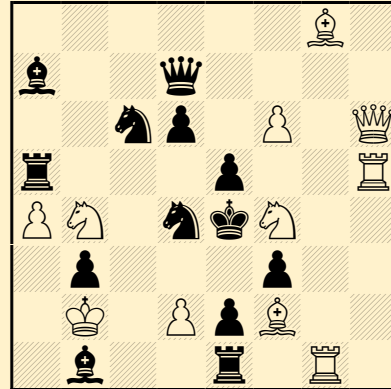
1.Cxf5! [2.Cxh6,Dh1,Dç2,Dé3+]

1...Cç4 2.Dxç4 [3.Dé4‡]

1...Txé6 2.Dxç5 [3.A~‡]

(1...Dxé6 2.Cé3,Dxg5)

Clé 2xampliative

Estanislao PUIG AMBROS**El Ajedrez Español 1955**

6B1/b2q4/2np1P1Q/r3p2R/PN1nkN2/
1p3p2/1K1PpB2/1b2r1R1

#2

(11+13) C+

1.Cg2? [2.Dé3‡]

mais 1...Cf5!

1.Cfd3? [2.Dé3‡]

mais 1...Cç2!

1.Cg6? [2.Dé3‡]

mais 1...Cé6!

1.Ch3! [2.Dé3‡]

1...Cç2 2.d3‡

1...Cf5 2.Tg4‡

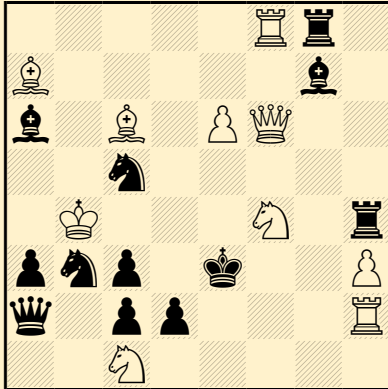
1...Cé6 2.Dg6‡

1...Cb5 2.Ad5‡

Anti-dual

Option

Duel Blanc-Noir

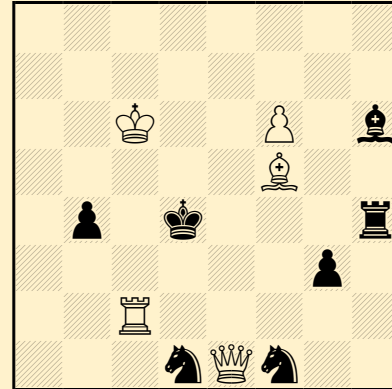
**Estanislao PUIG AMBROS****El Ajedrez Español 1944**

5Rr1/B5b1/b1B1PQ2/2n5/1K3N1r/pnp
1k2P/q1pp3R/2N5

#2 (10+12) C+

1.Df5! [2.Dé4‡]
1...Cd4 2.Cg2‡
1...Ad4 2.Cd5‡
1...Ad3 2.D×d3‡
1...T×f4+ 2.D×f4‡

Anti-dual
Auto-blocage
Mat par clouage
Auto-déclouage indirect
Déclouage indirect
Clé ampliative

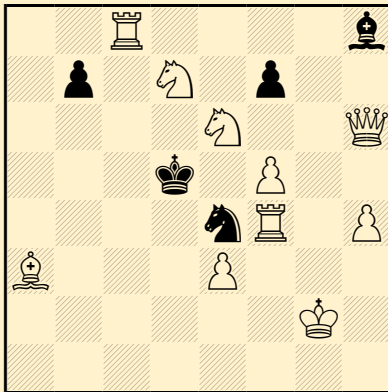
Estanislao PUIG AMBROS**Els Escacs a Catalunya 1935**

8/8/2K2P1b/5B2/1p1k3r/6p1/2R5/3n
Qn2

#2 (5+7) C+

1.Tç5! [2.Dé5‡]
1...Cdé3 2.Da1‡
1...Cfé3 2.Dd2‡
1...Aé3 2.D×b4‡
1...Af4,Té4 2.D(×)é4‡

Correction noire
Auto-blocage
Défenses sur la même case
Duel case-pièce

**Estanislao PUIG AMBROS****T.T. Club d'Echecs de****Manresa 1942****3° Prix**2R4b/1p1N1p2/4N2Q/3k1P2/4nR1P/B
3P3/6K1/8

#2

(10+5) C+

1.Tg4! [2.Cf4‡]

1...C~ 2.Cç7‡

1...Cd6 2.Tç5‡

1...Cf6 2.Td4‡

1...Aé5 2.Cb6‡

1...f×é6 2.D×é6‡

Correction noire

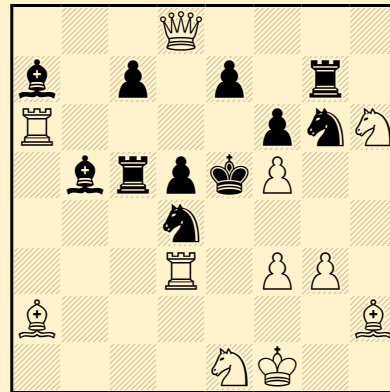
Anti-Somov A2

Somov B2

Isaev

Auto-blocage

Somov B1

Estanislao PUIG AMBROS**dédié à F. Novejarque pour
ses 70 ans****Problemas 1948 (v)****Recomandé**3Q4/b1p1p1r1/R4pnN/1brpkP2/3n4/3
R1PP1/B6B/4NK2

#2

(11+11) C+

1.Ag1! [2.A×d4‡]

1...Cd~ 2.Té6‡

1...C×f5 2.Cg4‡

1...Cç6 2.D×ç7‡

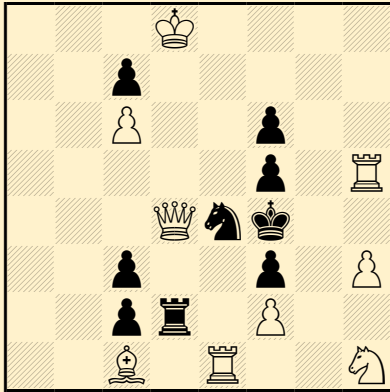
1...A×d3+ 2.C×d3‡

1...Tç~ 2.D×d5‡

1...Tç4 2.Té3‡

Correction noire

Déclouage indirect

**Estanislao PUIG AMBROS****1° T.T. El Ajedrez Español****1942****1° Mention d'Honneur**3K4/2p5/2P2p2/5p1R/3Qnk2/2p2p1P/
2pr1P2/2B1R2N

#2

(9+9) C+

1.Dd3! blocus

1...C~ 2.T×f5‡

1...Cg3 2.f×g3‡

1...Cg5 2.Th4‡

1...Cd6 2.Dé3‡

1...Ré5 2.T×é4‡

Correction noire

Howard

Mouvement Pelle

Déclouages réciproques

Captures réciproques

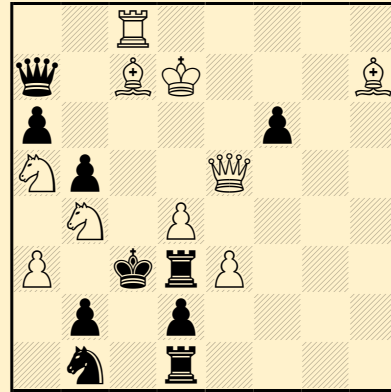
Mat par clouage

Déclouage direct

Déclouage indirect

Clé ampliative

Pat apparent

Estanislao PUIG AMBROS**Informacion 1944-45****1° Mention d'Honneur**2R5/q1BK3B/p4p2/Np2Q3/1N1P4/P1k
rP3/1p1p4/1n1r4

#2

(10+10) C+

1...T×d4+ 2.Cd5‡

1...D×d4+ 2.Ad6‡

1.Dd5! [2.Db3‡]

1...T×d4,T×é3 2.Ca2‡

1...D×d4 2.Aé5‡

1...D×ç7+ 2.T×ç7‡

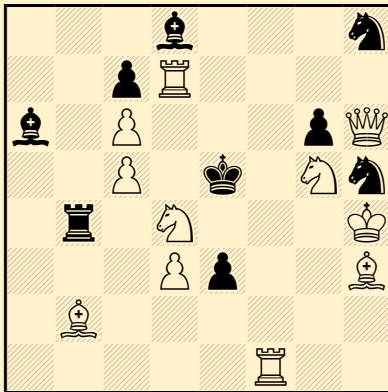
Batterie blanche

Mat par clouage

Auto-déclouage indirect

Clouage direct

Mats (suites) changé(e)s

**Estanislao PUIG AMBROS****3° Concours Bonus Socius****1941-42****1°-2° Prix e.a.**3b3n/2pR4/b1P3pQ/2P1k1Nn/1r1N3K
/3Pp2B/1B6/5R2

#2

(11+9) C+

1.Aé6! [2.Td5‡]

1...Cf4 2.Cdf3‡

1...Cf6 2.Cgf3‡

1...Aç4 2.Cb3‡

1...A×g5+ 2.D×g5‡

1...T×d4+ 2.A×d4‡

Dobbs

Echecs croisés

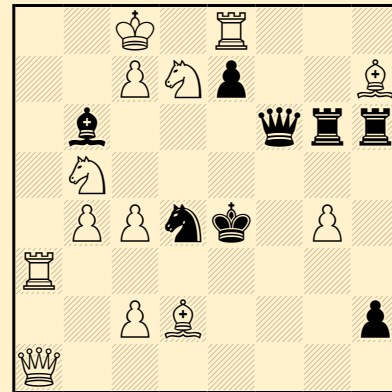
Somov B2

Auto-blocage

Echec double

Batterie blanche

Déclouage indirect

Estanislao PUIG AMBROS**Sociedad Española de
Problemistas de Ajedrez****1946****3° Mention d'Honneur**2K1R3/2PNp2B/1b3qrr/1N6/1PPnk1P1
/R7/2PB3p/Q7

#2

(13+8) C+

1.Tg3! [2.Cç3‡]

1...C~ 2.C×f6‡

1...Cf5 2.Dh1‡

1...Cé6 2.Da8‡

1...Df3 2.Cd6‡

Correction noire

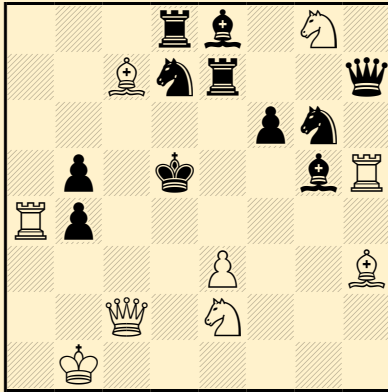
Anti-dual

Anti-Somov A2

Mat par double clouage

Mats miroir

Auto-déclouage indirect

**Estanislao PUIG AMBROS****3° Concours Bonus Socius****1941-42****3° Prix**3rb1N1/2Bnr2q/5pn1/1p1k2bR/Rp6/4
P2B/2Q1N3/1K6

♯2

(9+11) C+

1.Ta6! [2.Dç6‡]

1...Cg~ 2.Cf4‡

1...Cgé5 2.Td6‡

1...Cd~ 2.C×f6‡

1...Cdé5 2.é4‡

1...Té6 2.A×é6‡

Correction noire

Anti-dual

Somov B2

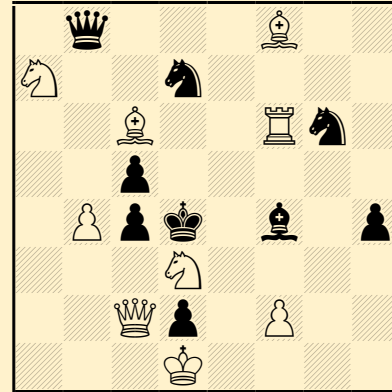
Anti-Roels

Mat par clouage

Mats miroir

Auto-déclouage indirect

Clouage indirect

Estanislao PUIG AMBROS**3° Concours Bonus Socius****1941-42****1° Mention d'Honneur**1q3B2/N2n4/2B2Rn1/2p5/1Ppk1b1p/
3N4/2Qp1P2/3K4

♯2

(9+9) C+

1.Cé5! [2.Cf3‡]

1...Cg×é5 2.T×f4‡

1...Cd×é5 2.A×ç5‡

1...A×é5 2.D×d2‡

1...D×é5 2.Cb5‡

1...R×é5 2.Dç3‡

1...ç3 2.Dé4‡

Auto-blocage

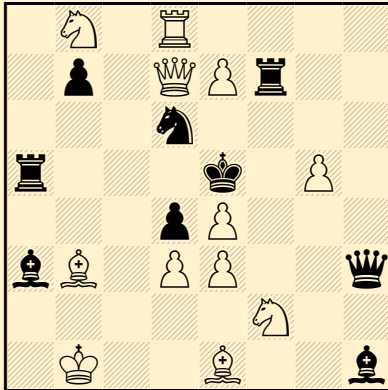
Quasi-sacrifice blanc

Captures multiples d'une pièce

blanche

Défenses sur la même case

Clé ampliative

**Estanislao PUIG AMBROS****Problemas 1954****4º Mention d'Honneur**

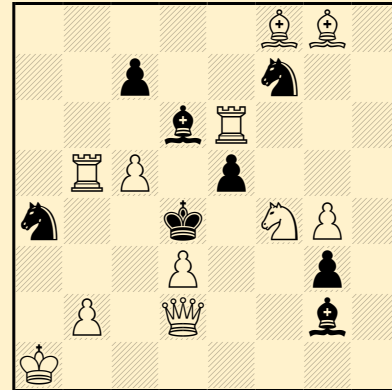
1N1R4/1p1QPr2/3n4/r3k1P1/3pP3/bB
1PP2q/5N2/1K2B2b

#2 (12+9) C+

1...Cç8, Cé8 2.D×d4‡
1...Cb5 2.Dd5‡
1...Cf5 2.Dé6‡

1.Dg4! [2.Cd7‡]
1...C~ 2.é×d4‡
1...Cb5 2.Td5‡
1...Cf5, T×é7 2.Df4‡
1...D×g4 2.C×g4‡
1...d×é3 2.Aç3‡

Feldmann 2
Anti-Somov A2
Captures réciproques

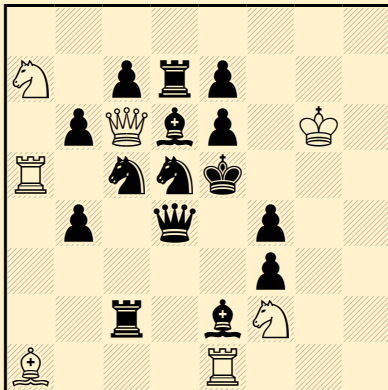
Estanislao PUIG AMBROS**dédié à J. Peris pour ses 50 ans****Problemas 1954****7º Mention d'Honneur**

5BB1/2p2n2/3bR3/1RP1p3/n2k1NP1/
3P2p1/1P1Q2b1/K7

#2 (11+8) C+

1.T×é5! [2.Dé3‡]
1...C×é5 2.Cé2‡
1...A×é5 2.Tb4‡
1...R×é5 2.Ag7‡
1...C×b2 2.D×b2‡
1...Aé4 2.T×é4‡

Anti-dual
Kniest
Auto-blocage
Clé de sacrifice
Captures multiples d'une pièce
blanche
Défenses sur la même case
Clé ampliative

**Estanislao PUIG AMBROS****Sociedad Española de****Problemistas de Ajedrez****1945****2° Prix**8/N1prp3/1pQbp1K1/R1nnk3/1p1q1p
2/5p2/2r1bN2/B3R3

#2

(7+15) C+

1.Da8! [2.Cç6‡]

1...Cç~ 2.Dh8‡

1...Cé4, Cç3 2.Cg4‡

1...Cé3 2.Dé4‡

1...Cf6 2.Cd3‡

Correction noire du 3° degré

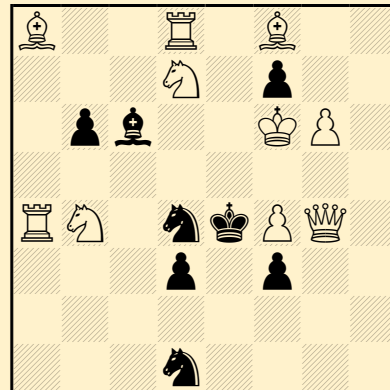
Anti-triple

Anti-Somov A2

Demi-clouage noir

Mat par triple clouage

Auto-déclouage indirect

Estanislao PUIG AMBROS**Pays-Bas - Espagne 1935**B2R1B2/3N1p2/1pb2KP1/8/RN1nkPQ1
/3p1p2/8/3n4

#2

(10+8) C+

1.Cd5! [2.Df5‡]

1...A×a4, A×d7 2.f5‡

1...A×d5 2.Té8‡

1...Cé3 2.Cç3‡

1...R×d5 2.Cç5‡

1...f2 2.Dg2‡

1...f×g6 2.Dé6‡

Anti-dual

Monitor

Batterie blanche

Clé de sacrifice

Mat par double clouage

Auto-déclouage indirect

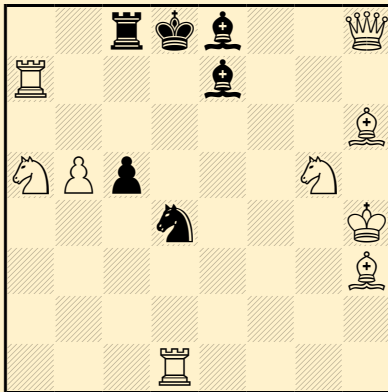
Clouage indirect

Déclouage indirect

Clé give and take



Estanislao PUIG AMBROS
Pays-Bas - Espagne 1935



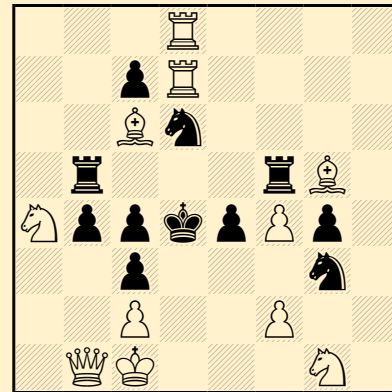
2rkb2Q/R3b3/7B/NPp3N1/3n3K/7B/8/
3R4

#2

(9+6) C-

démoli en 1 : 1.Td7#!

Estanislao PUIG AMBROS
Sociedad Española de
Problemistas de Ajedrez
1944 (v)
2º Mention d'Honneur



3R4/2pR4/2Bn4/1r3rB1/NppkpPp1/2p
3n1/2P2P2/1QK3N1

#3

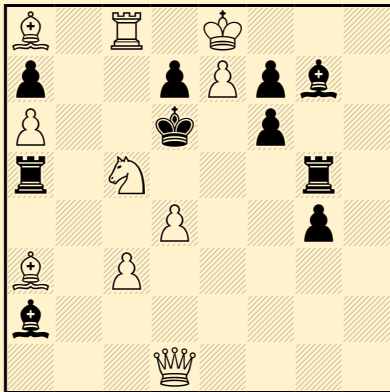
(11+11) C+

1.Té7! [2.T×é4+ C×é4 3.Cé2‡]
 1...Tbd5 2.D×b4 [3.D×ç3‡]
 Cb5/Cé2+ 3.Dç5/C×é2‡
 1...Tfd5 2.f5 [3.Aé3‡]
 Cé2+,Cf1,Cg×f5/Cd×f5
 3.C(×)é2/Af6‡
 1...Tbé5 2.D×b4 [3.D×ç3‡] Cé2+
 3.C×é2‡
 1...Tfé5 2.f×é5 [3.Aé3‡]
 Cé2+,Cf1,Cgf5 3.C(×)é2‡
 1...T×f4 2.A×f4 [3.Aé3‡]
 Cé2+/Cf1,Cgf5 3.C×é2/Cé2,T×é4‡

Changement de pièce clouante
 Echecs croisés
 Auto-clouage préventif
 Echange de place (cyclique) de pièces
 noires entre les positions finales
 Umnov
 Captures réciproques
 Mat par clouage
 Auto-clouage indirect
 Auto-déclouage indirect
 Clouage direct

**Estanislao PUIG AMBROS**

**Sociedad Española de
Problemistas de Ajedrez
1945
2º Mention d'Honneur**



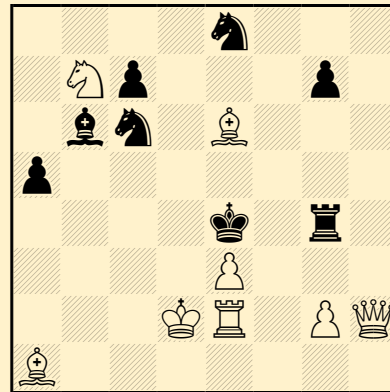
B1R1K3/p2pPpb1/P2k1p2/r1N3r1/3P2
p1/B1P5/b7/3Q4

#3 (10+10) C+

1.Df1! [2.Cb7+ Rd5,Ré6 3.Cd8‡]
1...Ta×ç5 2.Db5 [3.D×d7‡] Aé6
3.Db8‡
1...Tg×ç5 2.Df5 [3.D×d7‡] Aé6
3.Df4‡
1...T×a3,Tb5 2.D(×)b5
[3.D×d7,Db8‡]
(1...f5 2.Df4+ Aé5 3.D×é5,d×é5‡)

Batterie de Siers
Auto-blocage
Echec double
Anderssen
Batterie blanche
Mat par clouage
Auto-clouage direct

**Estanislao PUIG AMBROS
El Diluvio 1932
Recommandé**



4n3/1Np3p1/1bn1B3/p7/4k1r1/4P3/3
KR1PQ/B7

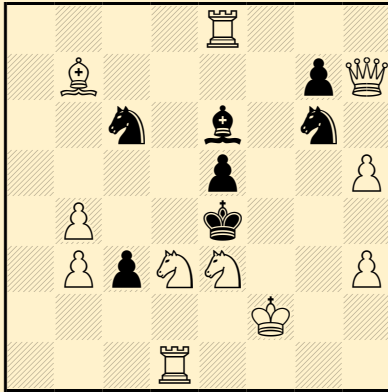
#2 (8+8) C+

1.D×ç7! [2.D×ç6‡]
1...Cb4,Cé5 2.D(×)é5‡
1...Cd4,Ad4 2.é×d4‡
1...Cf6,C×ç7 2.Cd6‡
1...A×é3+ 2.T×é3‡
1...A×ç7 2.Cç5‡
1...Tg5 2.Df4‡
(1...Cç~ 2.Dç2,Dé5‡)

Correction noire
Batterie blanche
Clé de sacrifice
Captures réciproques



Estanislao PUIG AMBROS
Sociedad Española de
Problemistas de Ajedrez
1945 (v)



4R3/1B4pQ/2n1b1n1/4p2P/1P2k3/1P
pNN2P/5K2/3R4

♯2

(11+7) C+

1.Cç2! blocus

1...A~ 2.T×é5‡

1...Ad5,Rf5 2.D×g6‡

1...Af5 2.A×ç6‡

1...Rd5 2.Cç5‡

Correction noire

Auto-blocage

Batterie blanche

Mat par double clouage

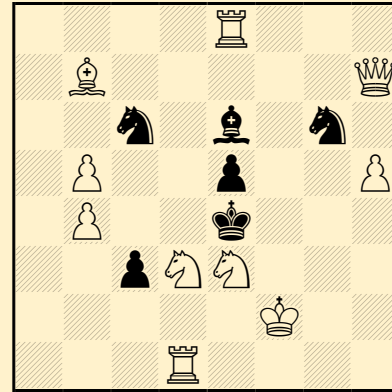
Auto-clouage indirect

Auto-déclouage indirect

Clé ampliative

Clé give and take

Estanislao PUIG AMBROS
Sociedad Española de
Problemistas de Ajedrez
1945



4R3/1B5Q/2n1b1n1/1P2p2P/1P2k3/2
pNN3/5K2/3R4

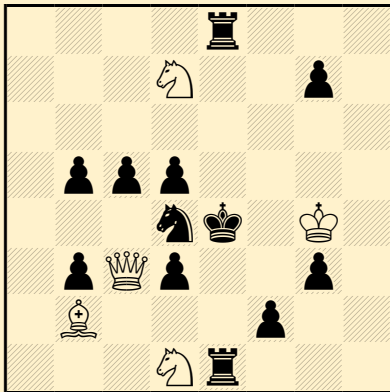
♯2

(10+6) C-

insoluble & démoli : 1.Cç5+!,Dh6!



Estanislao PUIG AMBROS
Sociedad Española de
Problemistas de Ajedrez
1945



4r3/3N2p1/8/1ppp4/3nk1K1/1pQp2p1
/1B3p2/3Nr3

#2 (5+12) C+

1...C~ 2.C×ç5‡

1...Cé6 2.Dé5‡

1.D×ç5! [2.D×d4‡]

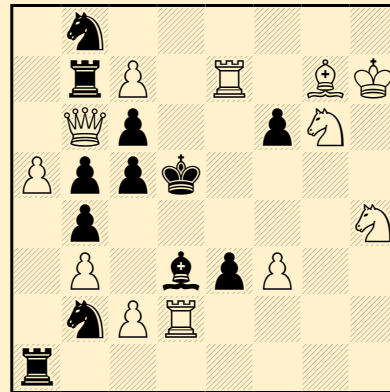
1...C~ 2.Cç3‡

1...Cé2 2.Dé3‡

Echange primaire-secondaire
(corrections noires)

Mats (suites) changé(e)s

Estanislao PUIG AMBROS
Sociedad Española de
Problemistas de Ajedrez
1945
2° Prix



1n6/1rP1R1BK/1Qp2pN1/Pppk4/1p5N
/1P1bpP2/1nPR4/r7

#3 (12+12) C+

1.Af8! [2.D×ç5+ R×ç5 3.Td7‡]

1...C~ 2.Td7+ Ré6 3.D×ç6‡

1...T×a5 2.Cf5 [3.Cf4‡]

1...T×b6 2.Té4 [3.Cf4‡]

Kniest

Batterie blanche

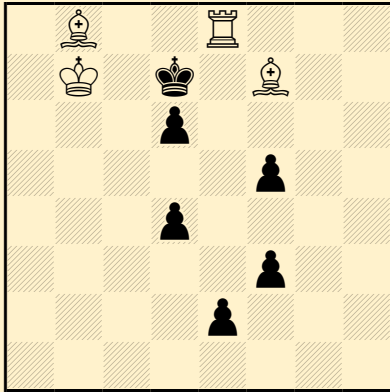
Quasi-sacrifice blanc

Auto-clouage indirect

Auto-déclouage indirect



Estanislao PUIG AMBROS
The Western Morning News
1937



1B2R3/1K1k1B2/3p4/5p2/3p4/5p2/4p3/8

≠3

(4+6) C+

1.Aç7! blocus

1...é1=~ 2.T×é1 [3.Aé8‡]

1...f2 2.T×é2 [3.Aé8‡]

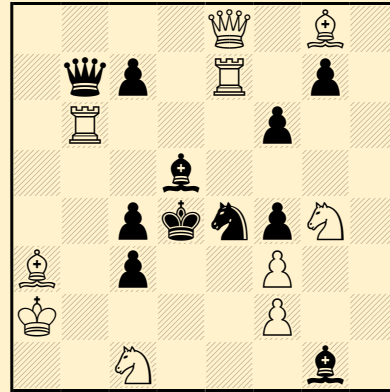
1...d3 2.Té3 [3.Aé8‡]

1...f4 2.Té4 [3.Aé8‡]

1...d5 2.Té5 [3.Aé8‡]

Schnoebelen

Estanislao PUIG AMBROS
Sociedad Española de
Problemistas de Ajedrez
1946



4Q1B1/1qp1R1p1/1R3p2/3b4/2pknpN1/B1p2P2/K4P2/2N3b1

≠3

(10+11) C+

1.Td7! [2.D×é4‡]

1...C~ 2.Dg6 [3.Cé2‡] Cé4/f5

3.D×é4/D×g7‡

1...Cg3 2.Dé1 [3.Dd1‡] Cé4,Cf1/ç2

3.D(×)é4/Dd2‡

1...Cd6 2.Dé2 [3.Dd1‡]

A×f3,Aé4/Cé4/ç2

3.D×ç4/D×é4/Dd2‡

1...ç2 2.D×é4+ Rç3 3.Ab4‡

(1...C×f2 2.C×f2,Dg6)

Switchback noir

Switchback de Cavalier

Demi-clouage noir

Auto-clouage préventif

Umnov différe

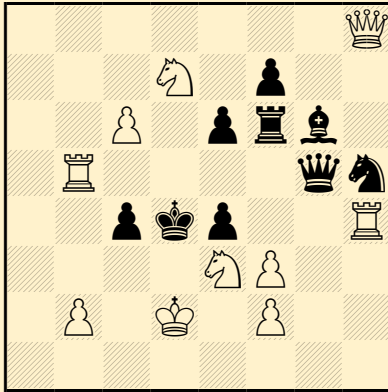
Mat par clouage

Auto-clouage indirect

Auto-déclouage indirect

Clouage direct

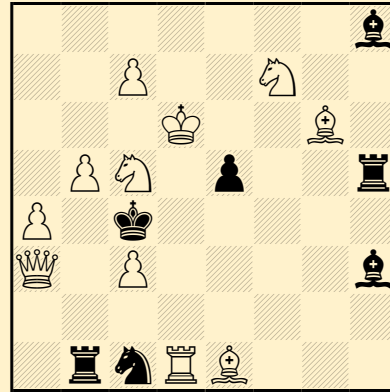
Duel Noir-Blanc

**Estanislao PUIG AMBROS****Sociedad Española de
Problemistas de Ajedrez
1946**7Q/3N1p2/2P1prb1/1R4qn/2pkp2R/4
NP2/1P1K1P2/8

♯2 (10+9) C+

1.Cé5! [2.Dd8‡]
 1...Cf4,Tf4,D×é5 2.Cç2‡
 1...T×f3 2.C×f3‡
 1...Tf5 2.T×é4‡
 1...D×é3+ 2.f×é3‡
 1...ç3+ 2.b×ç3‡

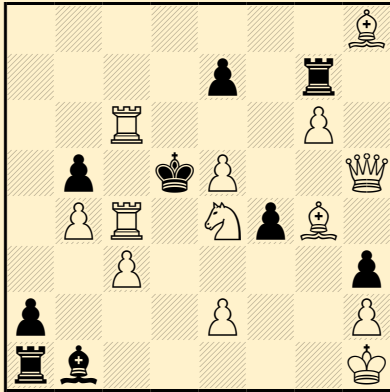
Balbo
 Dentiste
 Echecs croisés
 Echec double
 Anderssen
 Batterie masquée
 Batterie blanche
 Clé de sacrifice
 Auto-déclouage indirect
 Déclouage indirect

Estanislao PUIG AMBROS**Els Escacs a Catalunya 1936**7b/2P2N2/3K2B1/1PN1p2r/P1k5/Q1P
4b/8/1rnRB3

♯2 (11+7) C+

1.Cb3! [2.Cd2,Ca5,Db4‡] T×b3
 2.Dç5‡

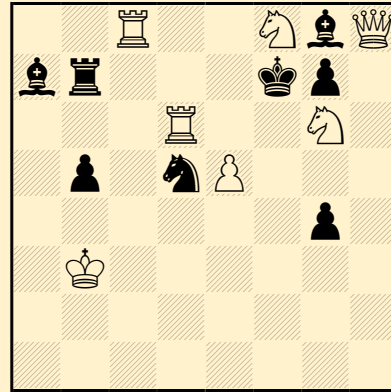
Clé de sacrifice

**Estanislao PUIG AMBROS****55° T.T. British Chess****Federation 1946-47****3° Recommandé**

7B/4p1r1/2R3P1/1p1kP2Q/1PR1NpB1
/2P4p/p3P2P/rb5K

s#2

(13+9) C-

1.Af3!*démoli : 1.Cf6+!***Estanislao PUIG AMBROS****Sociedad Española de****Problemistas de Ajedrez****1944**

2R2NbQ/br3kp1/3R2N1/1p1nP3/6p1/
1K6/8/8

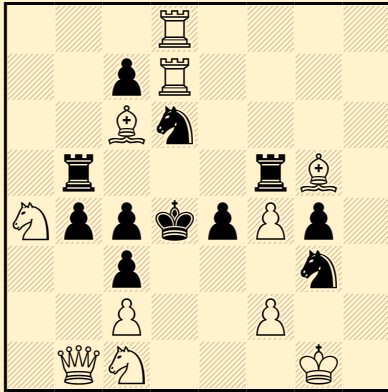
#2

(7+8) C-

1.Dh1!*démoli : 1.Tf6+!*



Estanislao PUIG AMBROS
Sociedad Española de
Problemistas de Ajedrez
1944



3R4/2pR4/2Bn4/1r3rB1/NppkpPp1/2p
 3n1/2P2P2/1QN3K1

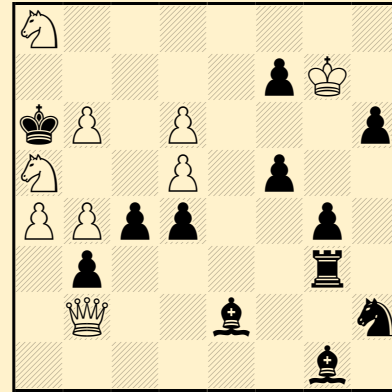
≠3

(11+11) C-

1.Té7!

démoli : 1.Cb3+!

Estanislao PUIG AMBROS
Sociedad Española de
Problemistas de Ajedrez
1942



N7/5pK1/kP1P3p/N2P1p2/PPpp2p1/1p
 4r1/1Q2b2n/6b1

≠3

(9+12) C+

1.d7! [2.d8=D [3.Dç8‡]]

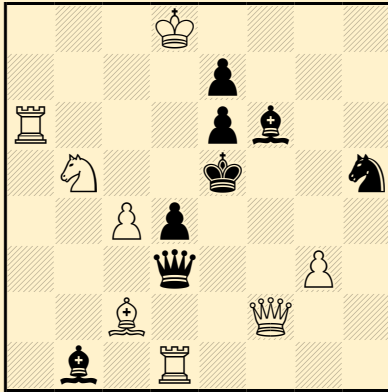
1...Af3 2.Dd2 [3.b5‡] ç3 3.Dd3‡

1...Té3 2.D×d4 [3.Cç7‡]

1...d3 2.Df6 [3.Cç7‡] A×b6

3.D×b6‡

Promotion

**Estanislao PUIG AMBROS****El Ajedrez Español 1936**3K4/4p3/R3pb2/1N2k2n/2Pp4/3q2P1/
2B2Q2/1b1R4

♯2

(8+8) C+

1.C×d4! [2.T×é6‡]

1...D×ç4 2.Cf3‡

1...Df5 2.Cç6‡

1...Cf4,Cg7 2.D(×)f4‡

1...D×d4+ 2.D×d4‡

1...Ré4 2.Té1‡

Anti-dual

Somov B1

Anti-Levman

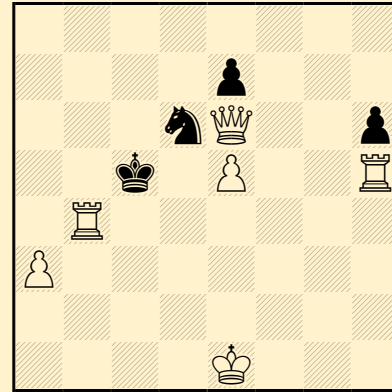
Clé de sacrifice

Mat par clouage

Auto-clouage direct

Déclouage direct

Exposition du Roi blanc à l'échec

Estanislao PUIG AMBROS**Sociedad Española de****Problemistas de Ajedrez****1944**

8/4p3/3nQ2p/2k1P2R/1R6/P7/8/4K3

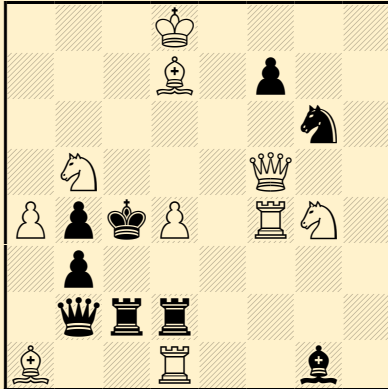
♯2

(6+4) C-

1.Dd7!**démoli : 1.D×é7!**



Estanislao PUIG AMBROS
Els Escacs a Catalunya 1938



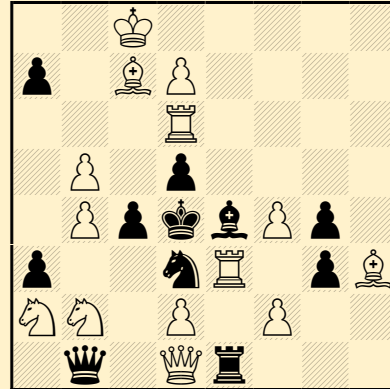
3K4/3B1p2/6n1/1N3Q2/PpkP1RN1/1p
6/1qrr4/B2R2b1

#2 (10+9) C+

1.Aç6! [2.Ad5‡]
 1...A×d4 2.Cé3‡
 1...T×d4+ 2.Dd5‡
 1...D×d4+ 2.Cd6‡
 1...C×f4,Cé5,Cé7 2.C(×)é5‡

Anti-Somov A1
 Echecs croisés
 Captures multiples d'une pièce
 blanche
 Mat par clouage
 Auto-clouage direct
 Auto-clouage indirect
 Défenses sur la même case
 Exposition du Roi blanc à l'échec

Estanislao PUIG AMBROS
El Ajedrez Español 1943
1º Prix



2K5/p1BP4/3R4/1P1p4/1PpkbPp1/p2n
R1pB/NN1P1P2/1q1Qr3

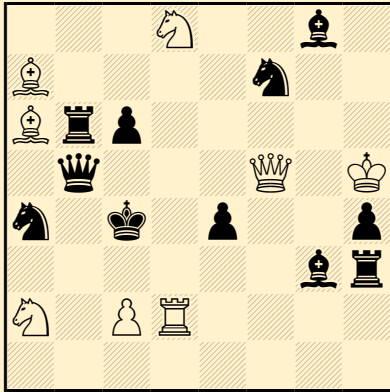
#3 (14+11) C+

1.D×g4? [2.Dg7+ Cé5 3.D×é5‡]
 mais 1...C×b4!

1.Da4? [2.D×a7+ Cç5 3.D×ç5‡]
 mais 1...C×f4!

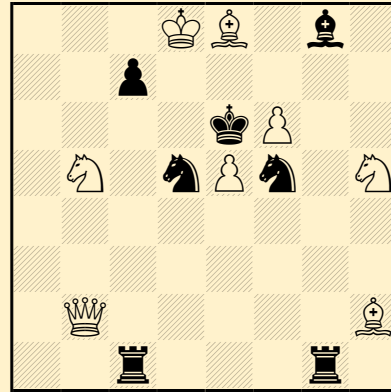
1.Cç3! [2.T×é4+ T×é4 3.T×d5‡]
 1...C~ 2.T×d5+ A×d5 3.Aé5‡
 1...C×b4 2.Da4 [3.D×a7‡]
 Ca6,Cç6,Cd3/a5,a6 3.D×ç4/Ab6‡
 1...C×f4 2.D×g4 [3.Dg7‡]
 Ag6,Cé6,Cg6,Ch5/Cd3
 3.T×d5/T×d5,D×é4‡
 1...Ah1,Ag2,Af3 2.d8=C
 [3.Cç6,Cé6‡]

Switchback noir
 Switchback de Cavalier
 Bristol bicolore
 Demi-clouage noir
 Auto-clouage préventif
 Sacrifice blanc
 Mat par clouage
 Auto-clouage indirect
 Banny

**Estanislao PUIG AMBROS****Fédération Catalane des****Echecs 1937****1° Hautement Recommandé**3N2b1/B4n2/Brp5/1q3Q1K/n1k1p2p/
6br/N1PR4/8

♯2

(8+11) C-

1.Cb7!**démoli : 1.A×b5+!****Estanislao PUIG AMBROS****El Ajedrez Español 1944****2° Mention d'Honneur**3KB1b1/2p5/4kP2/1N1nPn1N/8/8/1Q
5B/2r3r1

♯2

(8+7) C+

1.f7! [2.f8=C♯]

1...Cd~ 2.Cf4♯

1...Cg3 2.C×g7♯

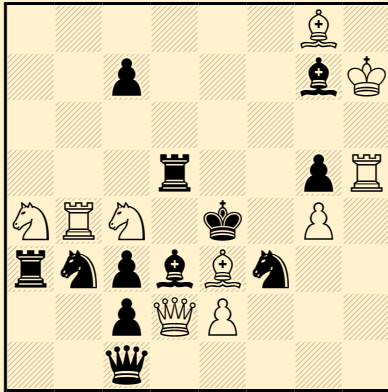
1...Cf~ 2.Cd4♯

1...Cg3 2.Cg7♯

1...A×f7 2.Ad7♯

Correction noire

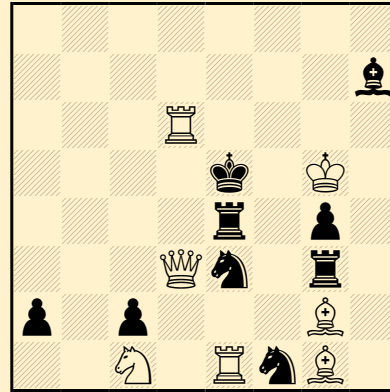
Promotion

**Estanislao PUIG AMBROS****T.T. Club d'Echecs de
Manresa 1942****1° Mention d'Honneur**6B1/2p3bK/8/3r2pR/NRN1k1P1/rnpbB
n2/2pQP3/2q5

#2 (10+12) C+

1.Af4! [2.Cd6‡]
 1...Cbd4,Ad4 2.é×d3‡
 1...Cfd4,Td4 2.C×ç3‡
 1...Rd4+ 2.D×d3‡
 1...A×ç4 2.A×d5‡

Feldmann 1
 Anti-dual
 Auto-blocage
 Echec double
 Batterie royale
 Batterie noire
 Batterie blanche
 Mat par clouage
 Défenses sur la même case
 Clé ampliative
 Exposition du Roi blanc à l'échec

Estanislao PUIG AMBROS**Palestine Post 1946-47****3° Prix**8/7b/3R4/4k1K1/4r1p1/3Qn1r1/p1p3
B1/2N1RnB1

#2 (7+9) C+

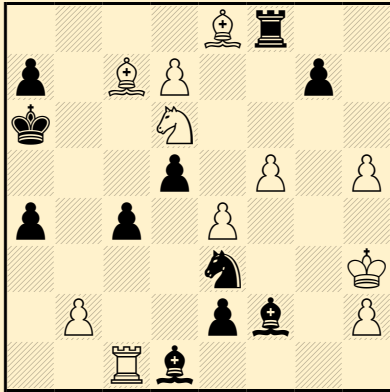
1...T~,Cd5 2.D(×)d5‡
 1...Td4 2.D×d4‡

1.Da6! [2.Cd3‡]
 1...T~ 2.Td5‡
 1...Td4,Cd5 2.Té6‡
 1...Cé~ 2.Ad4‡
 1...Cf5 2.T×é4‡

Feldmann 2
 Anti-dual
 Demi-clouage noir
 Martin
 Auto-blocage
 Mat par clouage



Estanislao PUIG AMBROS
Sociedad Española de
Problemistas de Ajedrez
1943



4Br2/p1BP2p1/k2N4/3p1P1P/p1p1P3/
4n2K/1P2pb1P/2Rb4

≠2 duplex (11+11) C+

1.b4! [2.b5‡]

1...a×b3 e.p. 2.Ta1‡

1...ç×b3 e.p. 2.Tç6‡

1.g5! [2.g4‡]

1...f×g6 e.p. 2.Tf3‡

1...h×g6 e.p. 2.Th8‡

Pape

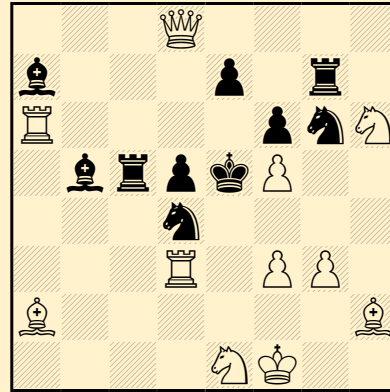
Echo

Echo(3,7)

Echo à 180°

Prise en passant

Estanislao PUIG AMBROS
dédié à F. Novejarque pour
ses 70 ans
Problemas 1948

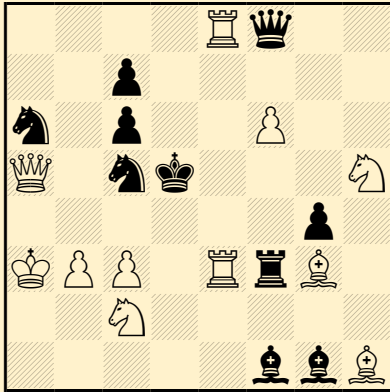


3Q4/b3p1r1/R4pnN/1brpkP2/3n4/3R1
PP1/B6B/4NK2

≠2 (11+10) C-

1.Ag1!

démoli : 1.Dd7!

**Estanislao PUIG AMBROS****Problemas 1950**

4Rq2/2p5/n1p2P2/Q1nk3N/6p1/KPP1
RrB1/2N5/5bbB

#2

(11+10) C+

1.Db4! [2.Dd4‡]

1...Cd3 2.ç4‡

1...Cé4,Cé6 2.Té5‡

1...Cd7 2.Cf4‡

1...C×b4 2.C×b4‡

1...A×é3 2.C×é3‡

1...D×f6 2.C×f6‡

(1...Aç4 2.D×ç4,b×ç4‡

1...C×b3,Ca4,Cb7 2.Cf4,T3é5,T8é5‡)

Correction noire

Anti-triple

Dalton

Somov B1

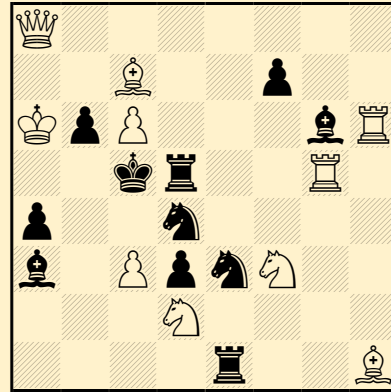
Anti-Roels

Clé de sacrifice

Mat par clouage

Clouage indirect

Déclouage direct

Estanislao PUIG AMBROS**Sociedad Española de****Problemistas de Ajedrez****1947**

Q7/2B2p2/KpP3bR/2kr2R1/p2n4/b1Pp
nN2/3N4/4r2B

#2

(10+11) C+

1.Cé5! [2.Cd7‡]

1...Céf5,f5 2.C×d3‡

1...Cdf5 2.Cé4‡

1...Af5 2.A×b6‡

1...T×é5 2.Df8‡

Anti-dual

Boros

Quasi-sacrifice blanc

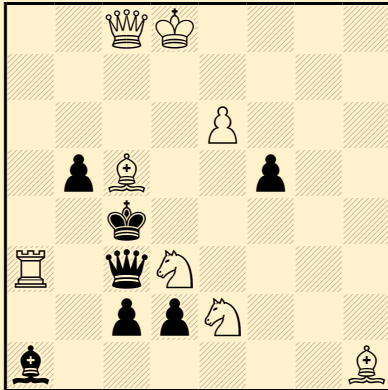
Mat par clouage

Déclouage indirect

Défenses sur la même case



Estanislao PUIG AMBROS
Els Escacs a Catalunya 1937



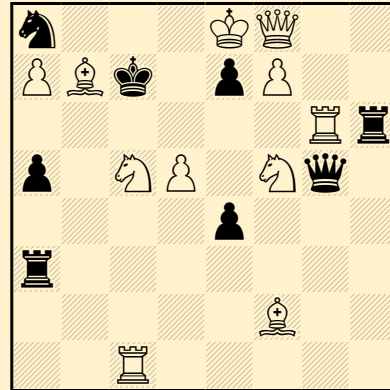
2QK4/8/4P3/1pB2p2/2k5/R1qN4/2pp
N3/b6B

±2

(8+7) C-

*insoluble & démoli :**1.Ag1+!,Af2+!,Ab6+!,Aa7+!*

Estanislao PUIG AMBROS
T.T. Association artistique
aragonaise 1949-50
7° Recommandé

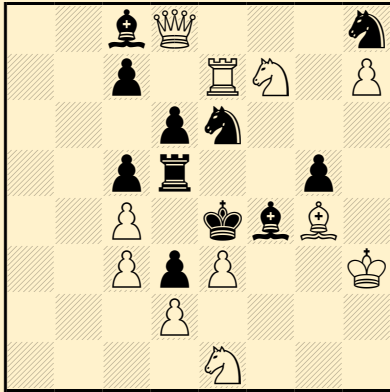


n3KQ2/PBk1pP2/6Rr/p1NP1Nq1/4p3/r
7/5B2/2R5

±2

(11+8) C-

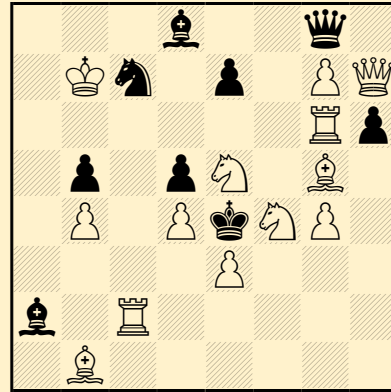
*1.Aa6!**démoli : 1.Cé6+!*

**Estanislao PUIG AMBROS****Problemas 1950****Prix e.a.**

2bQ3n/2p1RN1P/3pn3/2pr2p1/2P1kb
B1/2PpP2K/3P4/4N3

#3 (11+11) C+

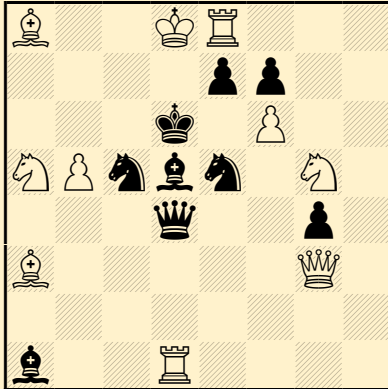
1.Té8! [2.Df6 [3.Af3‡]]
 1...Té5 2.D×d6 [3.D×d3‡]
 Td5,Cd4/A×é3/ç×d6
 3.D(×)d5/D×é5/C×d6‡
 1...Aé5 2.D×g5 [3.Af3,Af5,Df5‡]
 Cd4,Cd8,Cf4+,Cf8,Cg7/C×g5+
 3.D(×)f4/C×g5‡
 1...Cg6 2.Af3+ Rf5 3.é4‡
 Switchback noir
 Switchback de Tour
 Echecs croisés
 Demi-clouage noir
 Auto-clouage préventif
 Auto-blocage
 Echange de place (cyclique) de pièces
 blanches et noires entre les positions
 finales
 Umnov différé
 Quasi-sacrifice blanc
 Captures réciproques
 Mat par clouage
 Auto-clouage indirect
 Auto-déclouage indirect
 Clouage indirect
 Grimshaw

Estanislao PUIG AMBROS**Jubilé F. Novejarque-70,****Problemas 1948-50****2° Mention d'Honneur**

3b2q1/1Kn1p1PQ/6Rp/1p1pN1B1/1P1
PkNP1/4P3/b1R5/1B6

#2 (13+9) C+

1.C×d5! [2.Cç3‡]
 1...C×d5 2.T×a2‡
 1...A×d5+ 2.Tçç6‡
 1...D×d5+ 2.Tgç6‡
 1...R×d5 2.Tç5‡
 1...h×g5 2.Dh1‡
 Correction noire
 Echecs croisés
 Kniest
 Auto-blocage
 Batterie blanche
 Clé de sacrifice
 Captures multiples d'une pièce
 blanche
 Auto-clouage direct
 Défenses sur la même case
 Duel case-pièce
 Clé give and take
 Exposition du Roi blanc à l'échec

**Estanislao PUIG AMBROS****Enroque 1948****Recommandé**B2KR3/4pp2/3k1P2/NPnbn1N1/3q2p1
/B5Q1/8/b2R4

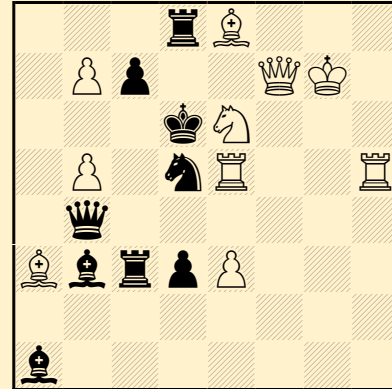
♯2

(10+9) C-

1.T×é7! [2.Td7‡]

1...Aç6 2.D×é5‡

1...Aé6 2.Cé4‡

1...Df4 2.Cb7,T×d5‡ (*dual*)1...Db4 2.C×f7,T×d5‡ (*dual*)**Estanislao PUIG AMBROS****Bamahane 1951****2° Prix**3rB3/1Pp2QK1/3kN3/1P1nR2R/1q6/B
brpP3/8/b7

♯2

(10+9) C+

1.Cg5! [2.Cé4‡]

1...Tç5,R×é5 2.Dé6‡

1...ç5 2.Té6‡

1...Rç5 2.D×ç7‡

1...Cf6 2.Dé7‡

1...Tç4 2.D×d5‡

Correction noire

Anti-dual

Auto-blocage

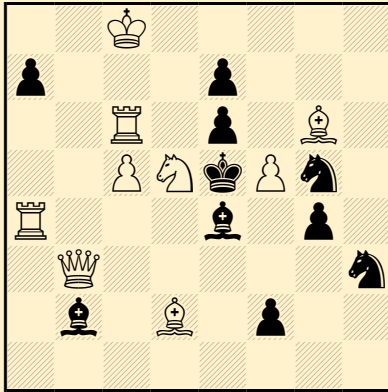
Mat par clouage

Auto-déclouage indirect

Clouage indirect

Défenses sur la même case

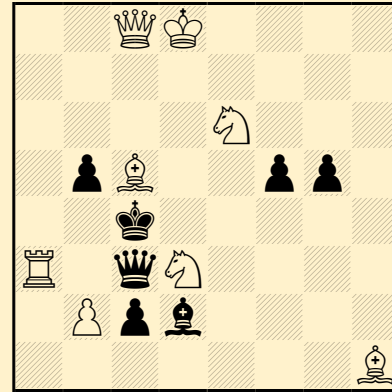
Clé 2×ampliative

**Estanislao PUIG AMBROS****Problemas 1953**

2K5/p3p3/2R1p1B1/2PNkPn1/R3b1p1
/1Q5n/1b1B1p2/8

♯2

(9+10) C-

1.Cé3!**démoli : 1.Aa5!****Estanislao PUIG AMBROS****correction Luis GOMEZ****Els Escacs a Catalunya 1937****(v)**

2QK4/8/4N3/1pB2pp1/2k5/R1qN4/1P
pb4/7B

♯2

(8+7) C+

1.Dç6! [2.Dd5‡]

1...D×d3+ 2.Ad6‡

1...Dd4+ 2.A×d4‡

1...Da5+ 2.Ab6‡

1...Dé5 2.C×é5‡

1...Df6+ 2.Aé7‡

1...Dh8+ 2.Af8‡

1...R×d3 2.D×b5‡

1...b4 2.Da6‡

Correction noire

Anti-quintuple (et +)

Echecs croisés

Batterie blanche

Captures réciproques

Mat par clouage

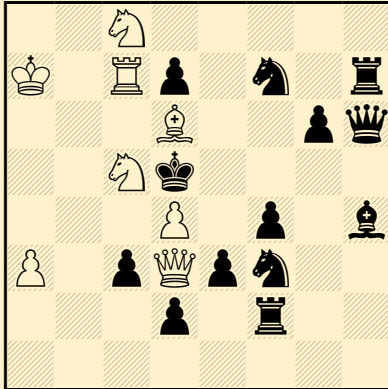
Auto-clouage direct

Duel Noir-Blanc



Estanislao PUIG AMBROS

Problemas 1954



2N5/K1Rp1n1r/3B2pq/2Nk4/3P1p1b/P
1pQpn2/3p1r2/8

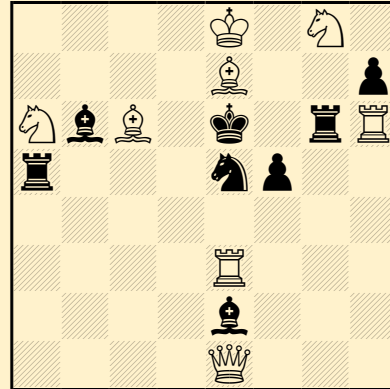
#3

(8+13) C-

1.Ra6! [2.Dé4+ Rç4 3.Cb6‡]
1...C7g5 2.A×f4 [3.Cb6‡] Cé5
3.d×é5‡
1...C3g5 2.Cé7+,Aé7 (*dual*)
1...ç2 2.Db3+ R×d4 3.Dd3‡

Estanislao PUIG AMBROS

Els Escacs a Catalunya 1934



4K1N1/4B2p/NbB1k1rR/r3np2/8/4R3/
4b3/4Q3

#2

(8+8) C+

1.Cf6! [2.Ad7‡]
1...Ab5 2.T×é5‡
1...A×é3 2.Cç7‡
1...Td5 2.A×d5‡
1...T×f6 2.T×f6‡
1...Tg8+ 2.C×g8‡

Switchback blanc

Switchback de Cavalier

Bristol bicolore

Correction noire

Dentiste

Anderssen

Batterie masquée

Batterie blanche

Clé de sacrifice

Captures réciproques

Mat par clouage

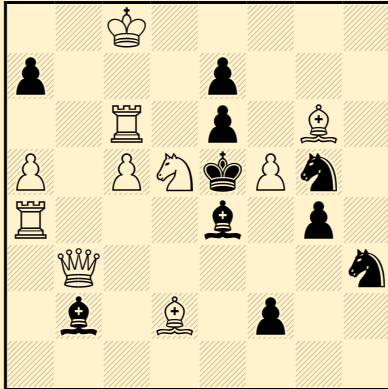
Déclouage indirect

Exposition du Roi blanc à l'échec



Estanislao PUIG AMBROS

Problemas 1954 (v)



2K5/p3p3/2R1p1B1/P1PNkPn1/R3b1p
1/1Q5n/1b1B1p2/8

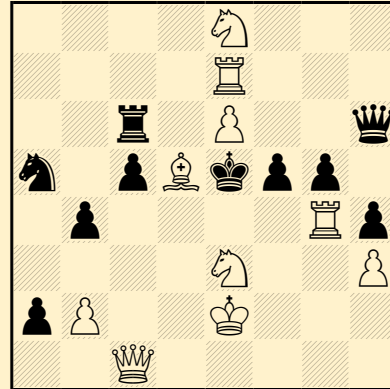
#2 (10+10) C+

1.Cé3! [2.C×g4‡]
1...Af3,A×f5,Rf6 2.D×b2‡
1...Rf4 2.Cç4‡
1...é×f5 2.Db8‡

Anderssen
Batterie blanche
Mat par clouage
Auto-clouage indirect
Clé 2×ampliative

Estanislao PUIG AMBROS

Problemas 1954

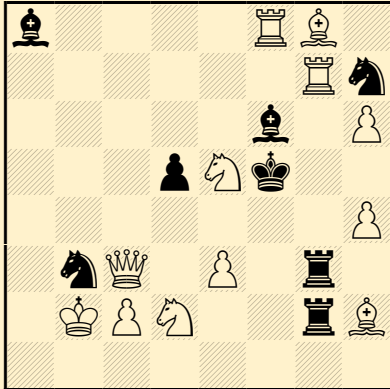


4N3/4R3/2r1P2q/n1pBkpp1/1p4Rp/4N
2P/pP2K3/2Q5

#3 (10+10) C-

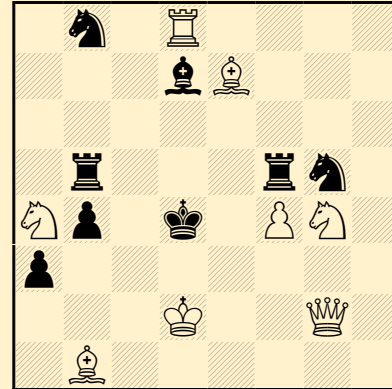
1.C×f5!

démoli : 1.A×ç6!

**Estanislao PUIG AMBROS****L'Italia Scacchistica 1953****3° Recommandé**b4RB1/6Rn/5b1P/3pNk2/7P/1nQ1P1r1
/1KPN2rB/8

±2

(12+8) C-

1.Cg4!**démoli : 1.Dç8+!****Estanislao PUIG AMBROS****L'Italia Scacchistica 1953****2° Recommandé**1n1R4/3bB3/8/1r3rn1/Np1k1PN1/p7/
3K2Q1/1B6

±3

(8+8) C+

1.Rd1! [2.Dd2+ Rç4 3.Dd3‡]

1...Tfd5 2.Dé2 [3.Dd3‡] A×g4,Af5

3.Af6‡

1...Rç4 2.Cé3+ Rb3/Rd4

3.Dç2/Dd2‡

1...Tbd5 2.Dç2 [3.Dd3‡] A×a4/Ab5

3.Aç5/Aç5,Dç5‡

(1...Cf3 2.Dç2,Dé2,D×f3)

Switchback noir

Switchback de Roi

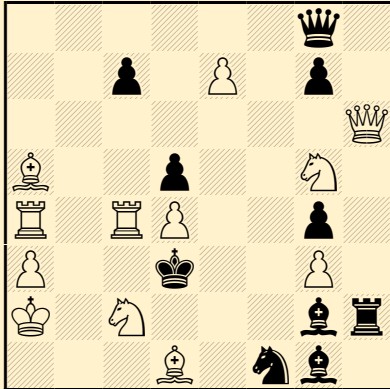
Auto-clouage préventif

Mat par clouage

Auto-clouage indirect

Auto-déclouage indirect

Clouage direct

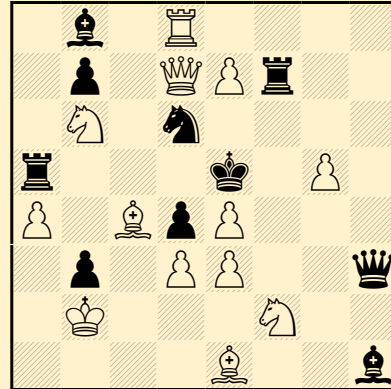
**Estanislao PUIG AMBROS****Magasinet 1954-I****2º Mention d'Honneur**

6q1/2p1P1p1/7Q/B2p2N1/R1RP2p1/P
2k2P1/K1N3br/3B1nb1

≠2 (12+10) C+

1.Cé4! [2.Cç5‡]
1...A×é4 2.Tç3‡
1...d×é4 2.Cé1‡
1...R×é4 2.Dg6‡
1...A×d4 2.T×d4‡

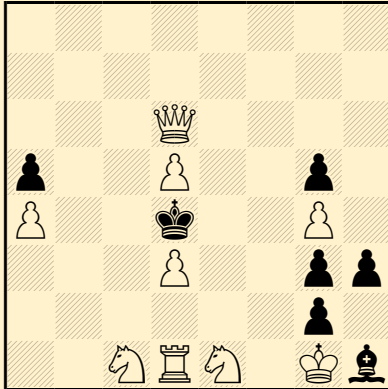
Barulin
Auto-blocage
Clé de sacrifice
Captures multiples d'une pièce
blanche
Clouage indirect
Défenses sur la même case
Clé ampliative

Estanislao PUIG AMBROS**Problemas 1954 (v)**

1b1R4/1p1QPr2/1N1n4/r3k1P1/P1BpP
3/1p1PP2q/1K3N2/4B2b

≠2 (13+10) C-

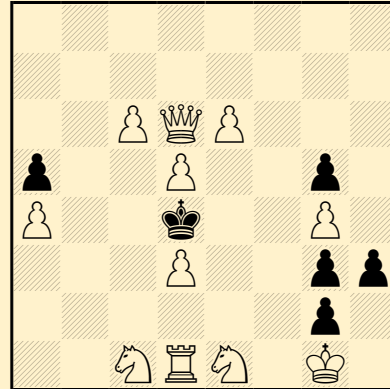
insoluble

**Estanislao PUIG AMBROS****Problemas 1957**

8/8/3Q4/p2P2p1/P2k2P1/3P2pp/6p1/
2NRN1Kb

s±2

(9+7) C-

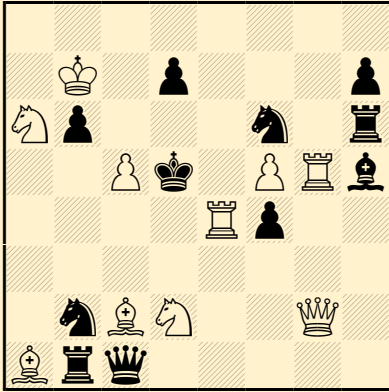
1.Dd8!**démoli : 1.Cb3+!,Dç6!,Dé6!****Estanislao PUIG AMBROS****Problemas 1958 (v)**

8/8/2PQP3/p2P2p1/P2k2P1/3P2pp/6p
1/2NRN1K1

s±2

(11+6) C-

insoluble

**Estanislao PUIG AMBROS****France - Espagne 1956-57****8°-11° Place e.a.**

8/1K1p3p/Np3n1r/2Pk1PRb/4Rp2/8/1nBN2Q1/Brq5

#2

(10+11) C+

1...Cb~ 2.Té5‡

1.Cç4! [2.C×b6‡]

1...Cb~ 2.Td4‡

1...C×ç4 2.Té5‡

1...C×é4 2.D×é4‡

1...Cg4 2.T×f4‡

1...Cé8,Cg8 2.f6‡

1...b×ç5 2.Cç7‡

Correction noire

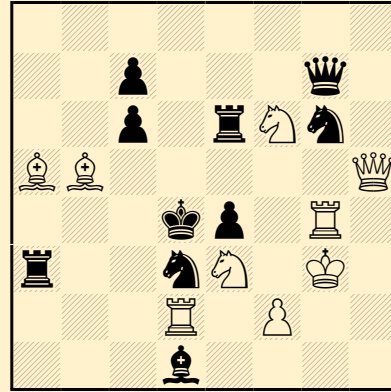
Auto-blocage

Umnov

Echec double

Batterie blanche

Quasi-sacrifice blanc

Estanislao PUIG AMBROS**France - Espagne 1956-57****4° Place**

8/2p3q1/2p1rNn1/BB5Q/3kp1R1/r2nN1K1/3R1P2/3b4

#2

(9+10) C+

1.Tç2! [2.Tç4‡]

1...Cdé5 2.T×é4‡

1...Cgé5 2.Cf5‡

1...Cd~ 2.Dç5‡

1...A×ç2 2.C×ç2‡

1...Tç3,Ta4 2.A(×)ç3‡

1...ç×b5 2.Dd5‡

Correction noire

Barulin

Anti-Somov A2

Somov B2

Clé de sacrifice

Clouage indirect

Déclouage direct



Antonio F. ARGUELLES

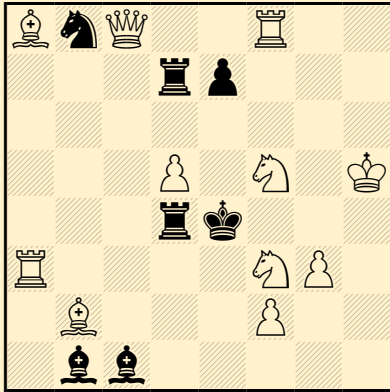
Estanislao PUIG AMBROS

Magasinet 1955-I

2° Prix

Estanislao PUIG AMBROS

Problemas 1955



BnQ2R2/3rp3/8/3P1N1K/3rk3/R4NP1/
1B3P2/1bb5

♯2 (11+7) C+

1...T4×d5 2.Dç4‡

1...T7×d5 2.Dé6‡

1.Cé3! [2.Tf4‡]

1...T4×d5+ 2.Cg5‡

1...T7×d5+ 2.Df5‡

1...A×é3 2.T×é3‡

1...é5 2.Cg5‡

Echecs croisés

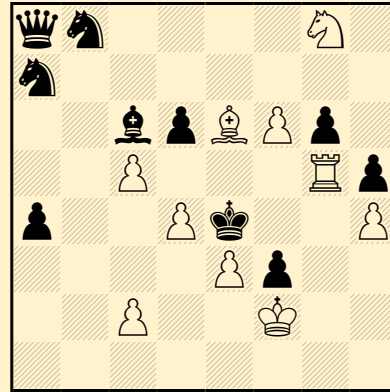
Clé de sacrifice

Mat par clouage

Auto-clouage direct

Mats (suites) changé(e)s

Exposition du Roi blanc à l'échec



qn4N1/n7/2bpBPp1/2P3Rp/p2Pk2P/4P
p2/2P2K2/8

♯3 (10+10) C+

1.Aç4? [2.Ad3‡]

mais 1...Ab5!

1.ç×d6? [2.Té5‡]

mais 1...Cd7!

1.Cé7! [2.Ag4 [3.A×f3‡] h×g4

3.T×g4‡]

1...Cb5 2.Aç4 [3.Ad3‡]

1...Ad7 2.ç×d6 [3.Té5‡]

Dd5,Caç6,Cbç6 3.A(×)d5‡

1...Cd7 2.T×g6 [3.Af5‡]

1...Ab5 2.Cd5 [3.Cç3‡] D×d5

3.A×d5‡

Keller (paradoxe)

Logique

Echange de place (cyclique) de pièces

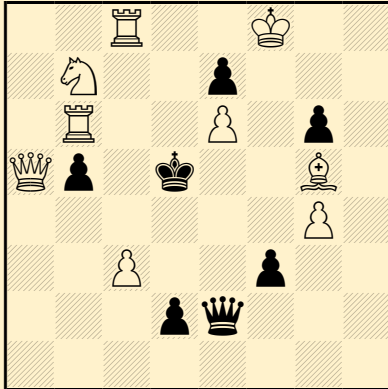
noires entre les positions finales

Sacrifice blanc



Estanislao PUIG AMBROS

Problemas 1958



2R2K2/1N2p3/1R2P1p1/Qp1k2B1/6P1
/2P2p2/3pq3/8

#3

(9+7) C+

1.Da8! [2.Ca5+,Cd8+]

1...Dç4,Ré4 2.Cç5+ Ré5 3.Cd7‡

1...D×é6 2.Cd6+ Ré5 3.Dé4‡

Batterie de Siers

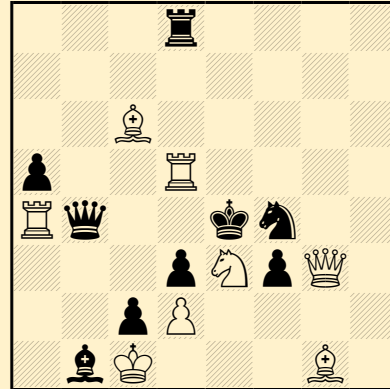
Echec double

Batterie blanche

Déclouage direct

Estanislao PUIG AMBROS

Problemas 1956

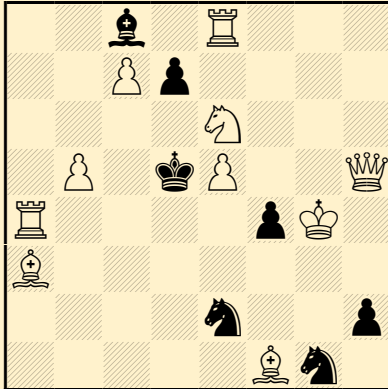


3r4/8/2B5/p2R4/Rq2kn2/3pNpQ1/2pP
4/1bK3B1

#2

(8+9) C-

insoluble & démoli : 1.Tf5+!

**Estanislao PUIG AMBROS****The Problemist 1954****Recommandé**

2b1R3/2Pp4/4N3/1P1kP2Q/R4pK1/B7
/4n2p/5Bn1

≠2 (10+7) C+

1...Cd4 2.T×d4‡

1...d6 2.é×d6‡

1.Cç5! [2.Df7‡]

1...Cd4 2.Aç4‡

1...d6+ 2.é6‡

Somov B2

Auto-blocage

Batterie masquée

Batterie noire

Batterie blanche

Mats (suites) changé(e)s

Exposition du Roi blanc à l'échec