



December 2009

Joaquim Crusats

Joaquimchessproblem@gmail.com

For more problems visit my blog at:

<http://www.chesspellets.blogspot.com/>

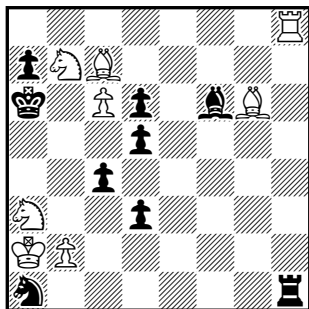
Some of my published problems in 2009

A

Joaquim Crusats

Ralf Krättschmer

Troll 2009

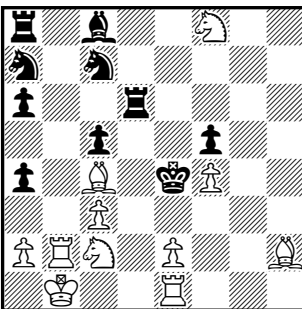


#6

B

Joaquim Crusats

Idee & Form 2009



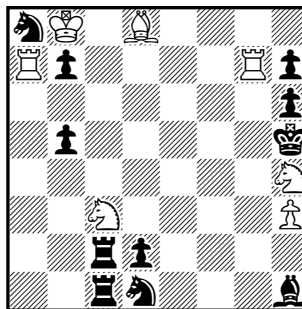
#9

C

Joaquim Crusats

Ralf Krättschmer

SME 2009



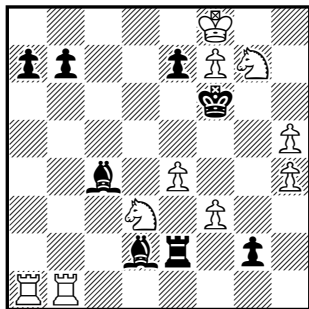
#6

D

Steven B. Dowd

Joaquim Crusats

Schach Aktive 2009



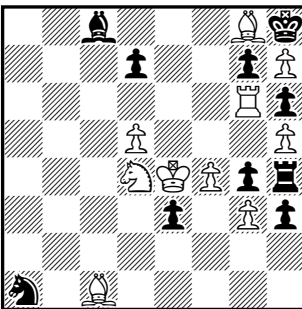
#6

E

Joaquim Crusats

Steven B. Dowd

The Problemist Suppl. 2009



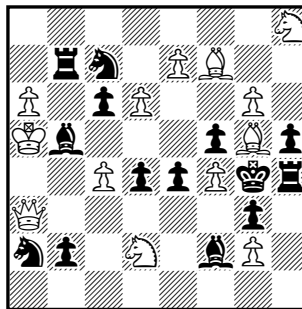
#3

F

Joaquim Crusats

Steven B. Dowd

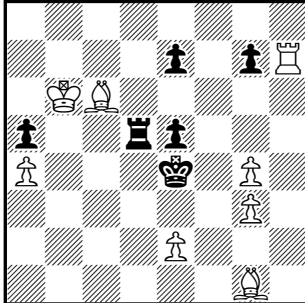
Mat Plus 2009



#9

G

Steven B. Dowd
Joaquim Crusats
Mirko Degenkolbe
Frank Fiedler-50 J.T. 2009

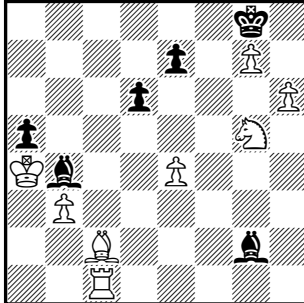


FIRST PRIZE

#4

H

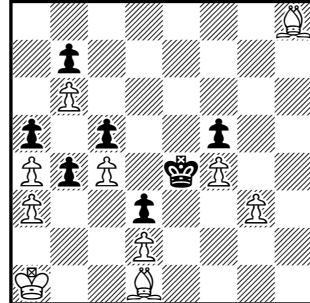
Joaquim Crusats
Euxinus Pontus 2009



#4

I

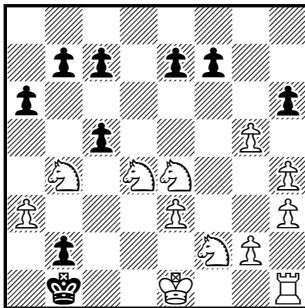
Joaquim Crusats
Steven B. Dowd
Freie Presse 2009



#9

J

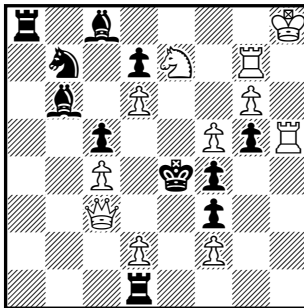
Joaquim Crusats
after Július Sunyer
The Problemist 2009



Color two knights black and #1

K

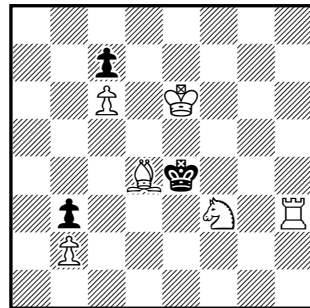
Joaquim Crusats
dedicated to Jordi Breu
Sch. Schachzeitung 2009



#7

L

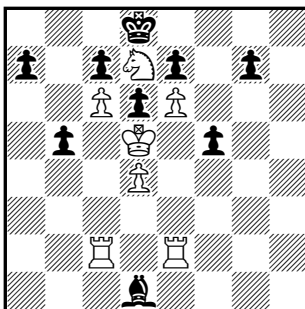
Steven B. Dowd
Joaquim Crusats
Horizon 2009



#5

M

Joaquim Crusats
Ralf Krätschmer
K.P. Zunke Memorial 2009

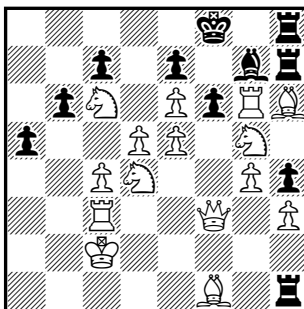


10th H.MENTION

#5

N

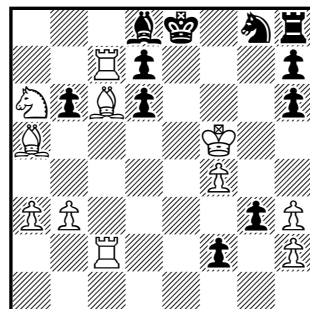
Joaquim Crusats
Steven B. Dowd
Mat Plus 2009



Proca retractor -3 & #2

O

Joaquim Crusats
Andrey Frolkin
Die Schwalbe 2009



Proca retractor -17 & #1

SOLUTIONS AND COMMENTS

- A.** Berlin theme with a mate by Black taking e.p. Model mate.

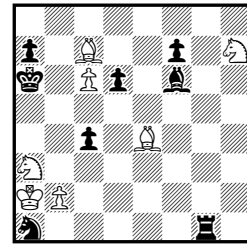
Try: 1.b4? (thr. 2.b5#) but 1...cxb3 e.p.#! (Berlin mate)

Solution: 1.Bf5 Rxb8 2.Sd8 Rxd8 3.b4 cxb3 e.p.+ (Berlin mate downgraded) 4.Kb1 Rb8 5.Bxd3+ Rb5 6.Bxb3# MM

Some may object to the presence of the wRh8, but it is thematic (the refutation to the try is exclusively the Berlin mate) and disappears from the board during the course of the solution.

Another version could be the one on the right:

Solution: 1.Bf5 Rg8 2.Sf8 Rxf8 3.b4 cxb3 e.p.+ 4.Kb1 Rb8 5.Bd3+ Rb5 6.Bxb5# MM



#6

- B.** The Lepuschütz theme doubled with no dualized full-length variations.

Solution: 1.Sh7 Rg6 2.Rb6 Rxb6+ 3.Kc1 Rg6 4.Rg1 Rxb1+ 5.Kd2 Rg6 6.Sg5+ Rxb5 7.Se3 Rg3 8.Bxg3 any 9.Bd3#

Just a few months after the problem appeared in print in *Idee & Form*, *Die Schwalbe* accepted an article for publication (*Heft 238, S. 202-203, August 2009*) which highlighted that the second Lepuschütz maneuver in the problem was not pure of aim (4.Kd2? but 4...Rd6+! *inter alia*). Strangely enough, as far as I know such a way of considering the purity of aim in a Lepuschütz maneuver had not been remarked before in any of the previous examples. Be it as it may, a technically correct version of the same problem will appear in *Idee & Form 2010*.

- C.** Berlin theme. Model mate.

Tries: 1.Se2? (thr. 2.Sf4/Sg3#) but 1...Rc8#! (Berlin mate)
1.Ra4? but 1...Rxc3!

Other tries: 1.Re7? but 1...Kxh4! 1.Sg6? but 1...hxg6! 1.Sf5? but 1...Rxc3! 1.Se2? but 1...Rc8+!

Solution: 1.Sg2 Bxg2 2.Ra4 (thr. 3.Rh4#) bxa4 3.Se2 (thr. 4.Sf4#) Rc8+ (Berlin mate downgraded) 4.Ka7 (thr. 5.Sf4/Sg3#) Rxd8 5.Sf4+ Kh4 6.Rg4# MM

- D.** Double rook sacrifice, knight sacrifice, anticipatory self-pin, linear circuit (a switchback with exactly one additional square visited), underpromotion, Phoenix, model mate.

Tries: 1.f4? (thr. 2.Se8+ Ke6 3.Sc5#) but 1...Rxe4!
1.Rxb7? (thr. 2.Se8+ Ke6 3.Rxe7#) but 1...Bh6!
1.Rb5? (thr. 2.Rf5#) Bxb5 2.Kg8 Bxd3 3.f4 Bxf4!

Solution: 1.Ra5! Bxa5 2.Rb5 Bxb5 3.Kg8 (thr. 4.f8Q#) Bxd3 4.f4 Bc4 5.Se8+ Ke6 6.f8S# MM

Comments: Klassisches Lenkungsproblem mit 2 grandiosen Auftaktzügen. Spektakulär und schönste Werbung für das Kunstsach (WS)! Doppeltes Turmopfer, um die Verteidigungskraft der Läufer einzuschränken. Schön, dass es dann zu einer S-Umwandlung im Mattzug kommt (ATü).

E. The wS wheel in a #3 Fleck.

Solution: 1.Bb2! (thr. 2.S~ 3.Bxg7#)

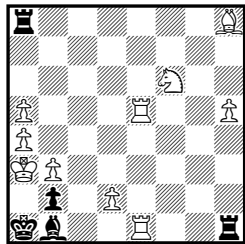
Black has eight possible moves:

- 1...Bb7 2.Sc6
- 1...Ba6 2.Sb5
- 1...d6 2.Se6
- 1...Rxb5 2.Sf5
- 1...h2 2.Sf3
- 1...e2 2.Sxe2
- 1...Sb3 2.Sxb3
- 1...Sc2 2.Sxc2

To the best of my knowledge the task had not been published with all the wS moves in a #3 Fleck (it is easily achieved in the #2 Fleck)

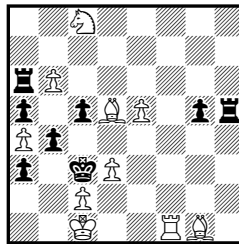
Below you can find examples of the same task for the wR and wB and a #4 Fleck that took the author many years to compose.

G. Mai
Tourni Olympique 1948-50
4 Reconnu



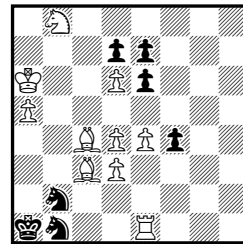
#3

C. Seneca
Schach-Echo 1965



#3

H. Burbach
Probleemblad 1957
2^{de}-3^{de} E.V. ex aequo



#4

F. Four white sacrifices in a row (with no check to the bK) while keeping black continuously under threat of mate in 1 to ultimately divert away the bR7 so as to deactivate the strong black defensive move Be1+ and play Sf3. The position is legal.

Solution: 1.Qd3 exd3 2.e8=S Sxe8 3.Bd5 cxd5 4.Sf7 Rxf7 5.Sf3 (and white will keep threatening Se5# until the end) 5...Re7 6.dxe7 Be1+ 7.Kb6 Ba5+ 8.Kxa5 ~ 9.Se5# 5...Be1+ 6.Kb6 Re7/Rb7+ 7.dxe7/axb7 Ba5+ 8.Kxa5 ~ 9.Se5# 6...Ba5+ 7.Kxa5 Re7 8.dxe7 ~ 9.Se5#

G. Full sequence of the Indian theme with a critical move, an interference to relieve stalemate, and a discovered check to the exposed bK.

Tries: 1.Ka7? but 1...g6!

Solution: 1.Ba8! (thr. 2.Rh8 3.Rc8 4.Rc4#) 1...e6/g5 2.Ka7 g5/e6 3.Rb7 (zz) R~/Rb5/Rd7 4.Rb4#/Rxb5#/Rxd7# 2...g6 3.Rc7 ~ 4.Rc4#

The problem has been reprinted in *The Problemist* May 2009, p.126.

H. Berlin theme with a Roman decoy. Model mate.

Tries: 1.e5? (thr. 2.Bh7#) but 1...Bc6#! (Berlin mate)
1.Bd3? (thr. 2.Rc8# 1... Bc3/Bc5 2.Bc4+ d5 3.Bxd5+ e6 4.Bxe6#) but 1...Bh3!

Solution: 1.Rf1! (thr. 2.Rf8#) Bxf1 (Roman decoy) 2.e5 (thr.3.Bh7#) Bb5+ (Berlin mate downgraded) 3.Kxb5 ~ 4.Bh7# MM 2...Bd3 3.Bxd3 ~ 4.Bh7#

I. Indian. Model mate.

Tries: 1.Bb2? but 1...b3!

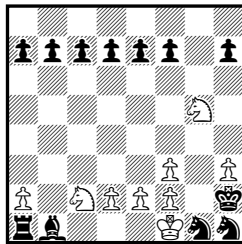
Solution: 1.Kb1! bxa3 (1...b3? 2.Ba1 b2 3.Kxb2 Kd4 4.Bf3 Kxc4 5.Bg2 Kd4 6.Kb3#) 2.Ba1 a2+ 3.Kb2 Kd4 4.Bf3 Kxc4 5.Kxa2 Kb4 6.Bd1 c4 7.Bd4 c3 8.dxc3+ Kc4 Bb3# MM.

J. This problem was after another one by Július Sunyer (see below). It was published as an original in an article by Jordi Breu, see: "An old problem revisited" *The Problemist*, May 2009, Vol 22 (3) p.106

Try: Color the knights on d4,e4 and 1.O-O#? but illegal castling!

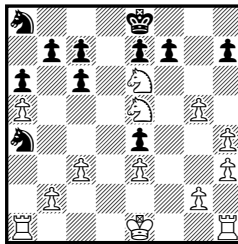
Solution: Colour the knights on d4,f2 and 1.Kxf2#! All missing pieces were captured by pawns. The wPg5 is the only piece that could capture the light-square bB, so it came from e2 and White never played e2-e3. The bPc5 had to capture the light-square wB; thus Black never played d7-d6. Since all the knights are still on the board, and given the pawn pattern and the facts above, the first capture had to be gxQf6, since the Q is the only piece that could have exited (via c2). All other missing white pieces were captured by the bPb2 on dark squares, including wPs at b2 and c3. The wB initially on c1 had to be taken on d4 or e5, when the wPb2 was still on the board, after c2-c3 and dxe3 had already been played, and the wPh4 was already in its current place. This bishop had to exit via e1-g3 or e1-f2-g1-h2-etc., so the wK had temporarily to leave its home square. Thus, White has lost the right to castle.

Július Sunyer
Els Escacs a Catalunya
December 1930



Add two white units
(neither on g3) then #1

Július Sunyer
Die Schwalbe 1931



#4

Not surprisingly, after my problem was published I found that Dr. Sunyer had also used the same idea in this #4 (White cannot castle because the wK had to move to make way for the wBc1)

K. The Lepuschütz theme doubled with no dualized full-length variations.

Try: 1.d3+? but 1...Rxd3!

Solution: 1.Rh1! Rxh1+ 2.Rh7 Rd1 3.Rh1 Rxh1+ 4.Kg7 Rd1 5.Kf6 any (5...Rxd2 6.Qxd2 any 7.Qd5#) 6.d3+ Rxd3 7.Qe5# 5...Rxd2 6.Qxd2 any 7.Qd5#

Dedicated to my chess friend Jordi Breu on occasion of his 82nd anniversary.

L. A moreover with a sacrificial try that fails only to the king flight seen in the main continuation, not to the acceptance of the sacrifice. Dependent on the flight of the king a Siers battery with two mates, or two mates by the rook.

Tries: 1.Rh2/Ba7? but 1...Kd3!

Solution: 1.Bf2! Kd3 2.Sd4+ Kd2 3.Rc3 (zz) Kd1 4.Be3 Ke1 5.Rc1# 2...Kc4 3.Rxb3 (zz) 4.Sf3+ Kxc6 5.e5# 4...Kc4 5.Sd2# 2...Ke4 3.Rg3 (zz) 4.Se2+ 4...Ke4 5.Re3#

M. The tourney required a symmetrical position and we presented the first symmetrical Berlin problem.

Try: 1.Rh2? (thr. 2.Rh8#) but 1...Bf3#! (Berlin mate)
 1.Rb2? (thr. Rxb5 Bb3+ 3.Rxb3 Kc8/e8 4.Rb8#) but 1...a6!

Solution: 1.Se5! (thr. 2.Rh2 Bf3+ 3.Sxf3! 4.Rh8#) 1...dxe5 2.Rh2 Bf3+ (downgraded mate)
 3.Kc5 Bxc6 4.Kxc6 Kc8/e8 5.Rh8# 3...Bh5 4.Rxh5 Kc8/e8 5.Rh8# 1...g6 2.Rh2 Bh5
 3.Rxh5 gxh5 4.Rg2 Kc8/e8 5.Rg8#

There is no superfluous unit on the diagram just for the sake of symmetry.

N. The new theme “Black retracts a move to regain its castling rights as its unique defense but loses them again with White’s next retraction” shown in a logical problem.

Hauptplan: -1.e4xBd5? -1...Ke8-f8 (-1...Ke8xRf8 is illegal) -2.e2-e4 (-2.e3-e4 does not prevent the check to the wK by the bR in the forward play) threatening 1.Qxd5 Kf8 2.Qd8# but Black has regained its castling rights, so 1...O-O! defends, being the unique reason why the *Hauptplan* fails.

Vorplan: -1.g2-g4! (threatens -2.Qh5-f3 and #2) -1...h4-h5 (unique defense) and now the *Hauptplan* works:

-2.e4xBd5 Ke8-f8 (Black regains its castling rights) -3.e2-e4 (White loses again its castling rights: one of the wRs is promoted, as the original one on h1 was taken on h2 by the bP originally on g7. The promoted wR had to escape from the northwest corner via Rd8+, Black thus losing its castling rights. Notice that the promoted wR could have not escaped via b6 because two promotions took place on the “a” and “b” files).

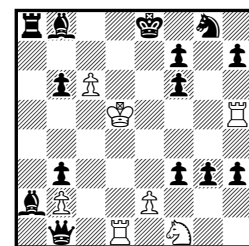
On the *Zweckreinheit*: The *Vorplan* should rule out Black castling (the sole reason why the *Hauptplan* failed) without providing any additional advantage. Notice that in this case -1.g2-g4! also prevents the check to the wK by the bR in the forward play, but this is something that was already accounted for in the *Hauptplan*. And in any case, then White also needs to retract -3.e2-e4, not -3.e3-e4.

Other versions of the problem without promoted pieces on the diagram were all cooked, mostly due to unpromotion of the wSc6 on the eighth rank and repromotion to wQ.

O. The solution has not yet been published. The problem is based on idea by Andrey Frolin published eighteen years ago.

Problem with a forward defense in a logical connection. Main plan: -1.Kd6-d5? Ba7-b8+ -2.Rg5-h5 and forward 1.Rxg8#; but the forward defense -1...Ba7-b8 and 1...O-O-O# refutes. Solution: -1.Re1xRd1! Rc1-d1+ -2.Kc4-d5 Rd1-c1+ -3.Kd4-c4 Rc1-d1+ -4.Kc3-d4 Rd1-c1+ -5.Kd2-c3 Rc1-d1+ -6.Se3xSf1 Sh2-f1+ and now the wK returns to d5 (...) -10.Kd5-c4 Rc1-d1+ and the main plan works -11.Kd6-d5! All 16 black units are on the board, the bPs have captured all the missing white units including the a-pawn after promotion on a8. That means Black’s castling is illegal.

Andrey Frolin
Die Schwalbe 1991



Proca retractor -12 & #
