

SELECCIÓN DE PROBLEMAS

TEMA GAMAGE*

POR

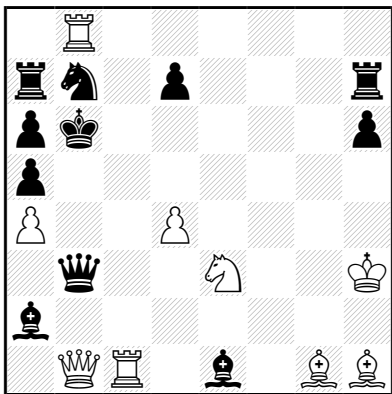
PEDRO CAÑIZARES CUADRA



***Definición del Tema Gamage:** Una pieza negra clavada es interceptada sobre una línea diferente de la línea de clavada por otra pieza negra; las blancas pueden ahora dar mate desclavando la pieza negra de manera directa.

Comins MANSFIELD

Good Companion 1919



#2 (9+11) C+

1.Fh2! [2.Fç7‡]

1...Fç3 2.Cç4‡

1...Fg3 2.Cd5‡

1...d6 2.Tç6‡

1...d5! 2.Dg6‡

(1...Ta8 2.Txb7‡)

Java

Gamage

Correction noire

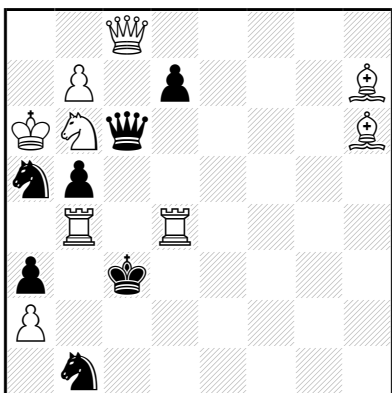
Mat par clouage

Déclouage indirect

Frederick GAMAGE

Tidskrift för Schack 1911

1° Prix



#2 (9+7) C+

1.Th4! blocus

1...d6 2.Dh8‡

1...d5 2.Dh3‡

1...D~ 2.Cd5‡

1...Ca~ 2.Tb3‡

o

1...Cd2 2.Fg7†

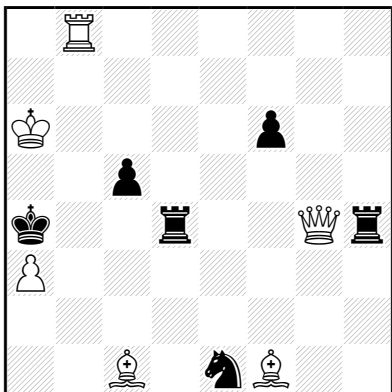
Gamage

Capture d'une pièce clouante par la pièce clouée

Mat par clouage

Déclouage direct

Jacobus J. EBBEN La Stratégie 1935



≠2

(6+6) C+

1.Tb1! [2.Fb5†]

1...Cd3 2.Dd1†

1...Tç4 2.Dd7†

1...ç4 2.Tb4†

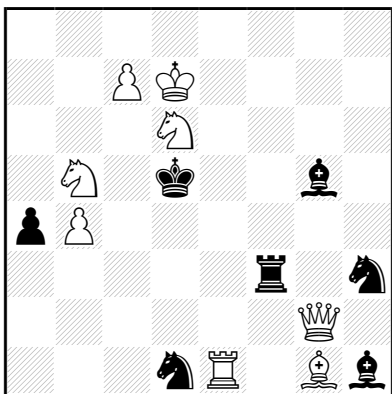
Mouvement Pelle

Déclouage direct

Gamage

Arguelles

Godefroy MARTIN The Problemist 1931



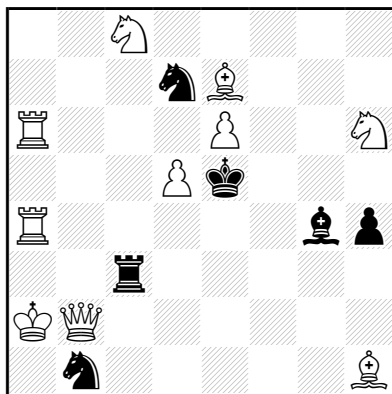
≠2

(8+7) C+

1.Fh2! [2.Té5†]
 1...Fé3 2.Da2†
 1...Cé3! 2.Dd2†
 1...Cf4 2.Dxg5†
 1...Ff4,Ff6 2.Dg8†

Gamage
 Correction noire

**Pierre MONREAL
 Aspects 1944**

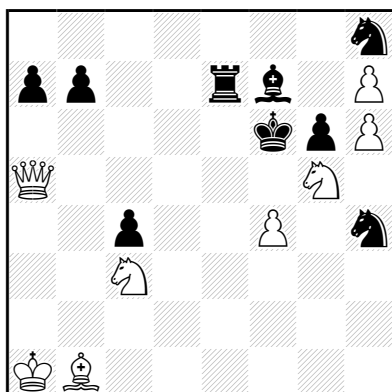


≠2 (10+6) C+

1.T6a5! [2.Té4†]
 1...Cç5 2.Db8†
 1...Ff3 2.Dh2†
 1...Ff5 2.Cf7†
 1...Cf6 2.Fd6†
 1...Cd2 2.Dxç3†

Gamage
 Anti-Somov A1
 Auto-blocage
 Déclouage direct

**Julius BUCHWALD
 Die Schwalbe 1932**

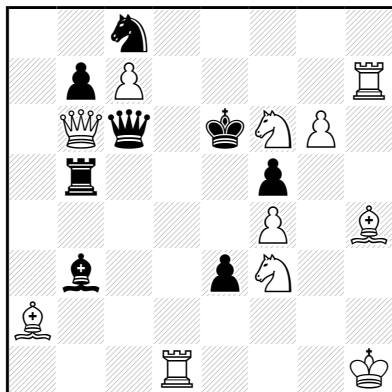


±2 (8+9) C+

1.Dd8! [2.Dxh8♣]
1...Fé6 2.Dd4♣
1...Fé8,Fd5 2.C(x)d5♣
1...Fg8 2.hxg8=C♣
1...Cf5 2.Cçé4♣

Anti-Gamage
Gamage
Valve
Somov Bz
Mat par clouage
Clouage direct
Déclouage direct
Promotion

Jean-Pierre BOYER
Mémorial C. Pelle, Europe Echecs 1967
1° Recommandé

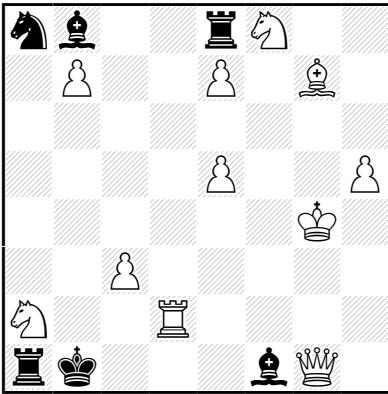


±2 (11+8) C+

1...Dd6 2.Cd4♣
1.Cé8! [2.Cg7♣]
1...Dd6,Td5 2.Cg5♣
1...Fd5 2.Dxé3♣
1...Cd6 2.Té7♣

Gamage
Mouvement Pelle

Shlomo SEIDER
Theodor TAUBER
Probleemblad 1980
1° Prix



♯2 (11+6) C+
Circé

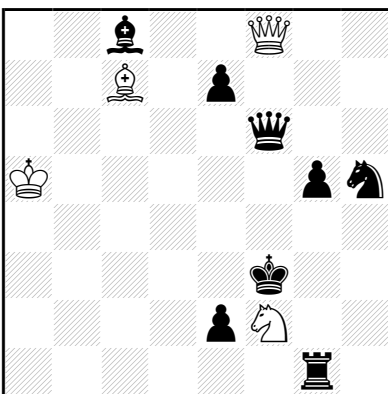
1.Cd7? [2.Dxf1(Fç8)‡]
1...Txé7(é2) 2.Db6‡
mais 1...Tg8!

1.Rg5? [2.Dxf1(Fç8)‡]
mais 1...Txé7(é2)!

1.Rh4! [2.Dxf1(Fç8)‡]
1...Tç8 2.Dxf1‡
1...Txé7(é2) 2.Dg6‡
1...Fxé5(é2) 2.Db6‡

Gamage
Anti-dual

József KORPONAI
feenschach 1973
1° Mention d'Honneur

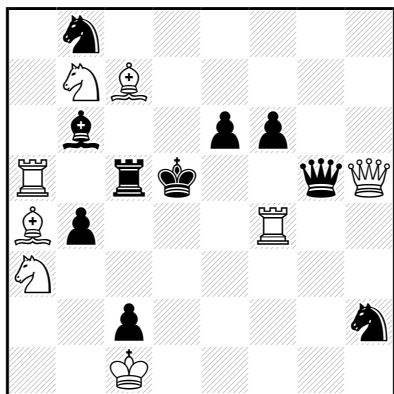


h♯2 (4+8) C+
2.1.1.1

1.Tg2 Fg3 2.é5 Da3‡
 1.Fg4 Cd1 2.é6 Da8‡

Gamage
 Auto-blocage

Guy W. CHANDLER
Comins MANSFIELD
The Four-Leaved Shamrock 1913
1° Prix

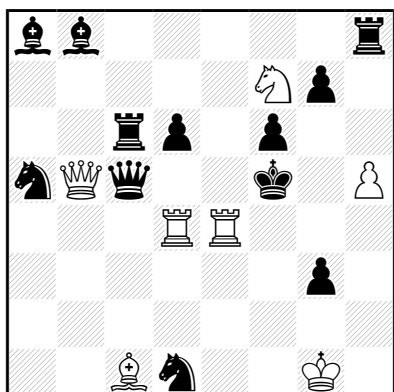


‡2 (8+10) C+

1.Cxç2! [2.Dd1‡]
 1...Tb5,Txa5 2.Cxb4‡
 1...Dxh5,Df5,Dé5 2.Td4‡
 1...Cf3,Cf1 2.D(x)f3‡
 1...Cg4 2.Dh1‡
 1...Fxç7 2.Txç5‡
 1...é5 2.Df7‡
 1...Cç6 2.Fb3‡

Déclouage direct
 Auto-clouage direct
 Mouvement Pelle
 Gamage

Guy W. CHANDLER
Comins MANSFIELD
Hampstead and Highgate Express 1914

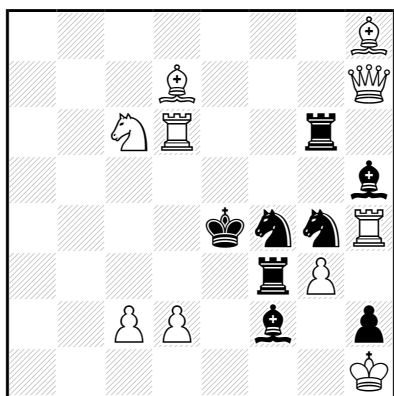


♯2 (7+12) C+

1.Té7! [2.Dd3†]
1...Cb2,Cç3 2.Df1†
1...Cf2 2.Tf4†
1...Cç4 2.Db1†
1...Dé5,Dxb5 2.Tf4†
1...Tb6,Ta6,Tçç8 2.Dd7†
1...Tç7 2.Cxd6†
(1...Dd5 2.Dxd5,Tf4†)

Déclouage direct
Correction noire
Gamage
Batterie noire

Comins MANSFIELD Morning Post 1926

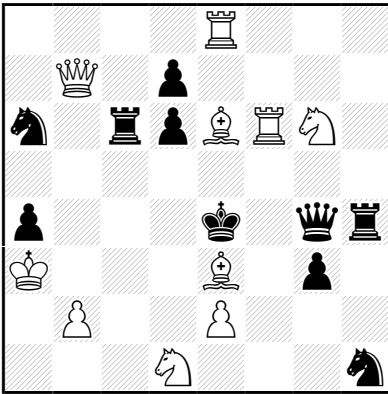


♯2 (10+8) C+

1.Cd4! [2.Ff5†]
1...Cé6/Ch3/Cd3/Cg2/Céz/Ch6 2.Fç6†
1...Cd5 2.Té6†
1...Cf6 2.Dé7†
1...Cé3 2.d3†
1...Fxd4 2.Txd4†

Demi-clouage noir
Batterie noire
Correction noire
Gamage

Comins MANSFIELD 22° T.T. The Brisbane Courier 1926 5° Prix



#2 (10+10) C+

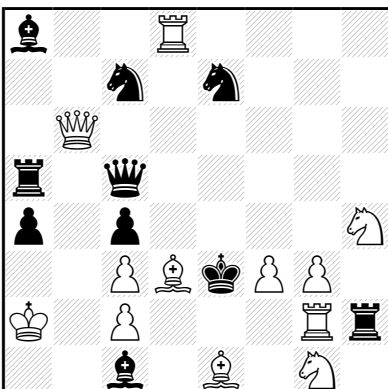
- 1.Fç5? dxç5!
- 1.Fb6? Cç5!
- 1.Fg1? Cf2!

- 1.Fa7! [2.Cç3‡]
- 1...Dxg6 2.Ff7‡
- 1...Df3+ 2.Fb3‡
- 1...Dxé2 2.Fç4‡
- 1...Cç5 2.Db4‡
- 1...d5 2.Ff5‡

- 1.Db5? Tç3+!
- 1.Db3? axb3!

Option
 Duel Noir-Blanc
 Gamage
 Exposition du Roi blanc à l'échec
 Clé d'éloignement

Wieland BRUCH
Schach-Aktiv 1991
1° Mention d'Honneur



≠2 (12+10) C+

1.Ff1? [2.Ff2♠]
mais 1...Fxf3!

1.Fé4? [2.Ff2♠]
mais 1...Cçd5!

1.Ff5? [2.Dh6,Ff2♠]
mais 1...Céd5!

1.Fg6? [2.Ff2♠]
mais 1...Fd5!

1.Fh7! [2.Ff2♠]
1...Fd5 2.Dh6♠
1...Cçd5 2.Dé6♠
1...Céd5 2.Cf5♠
1...Dd4 2.Dxd4♠
1...Txg2 2.Cxg2♠

Correction blanche

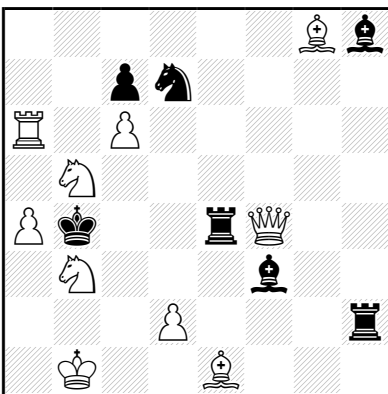
Gamage

Anti-Somov A1

Défenses sur la même case

Auto-obstruction

Leif Carl SCHMIDT Die Schwalbe 1976



≠2 (10+7) C+

1.Cç1! [2.Cd3♠]
1...Cé5 2.Df8♠
1...Fé2 2.d4♠
1...Cç5 2.Ca2♠
1...Tç4 2.Dxç4♠

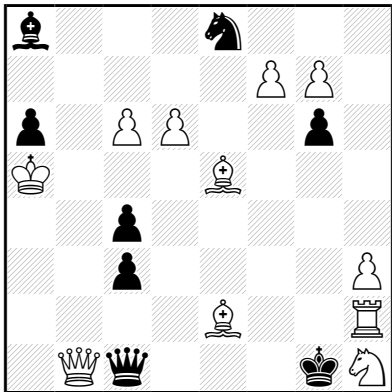
Gamage

Goethart

o

Clé ampliative

Theodor TAUBER
The Problemist 1980
2° Recommandé



≠2 (11+8) C+
Circé

1.Fxç4(ç7)! [2.Dxç1(Dd8)‡]

1...çxd6(d2) 2.Db6‡

1...Cxd6(d2) 2.Dxg6‡

(1...Dd1 2.Dxd1(Dd8)‡

1...Dé1 2.Dxé1(Dd8)‡

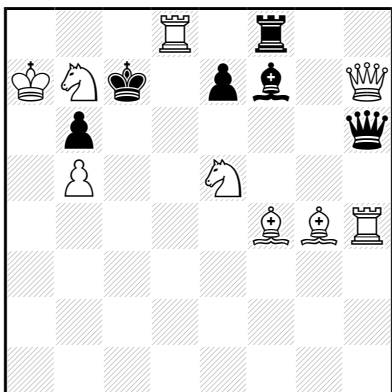
1...Df1 2.Dxf1(Dd8)‡)

Gamage

Anti-dual

Fermeture de ligne noire par les Blancs

Colin VAUGHAN
T.T. Cambridge 1985
Recommandé



≠2 (9+6) C+

1.Txh6! [2.Tç6‡]

1...é6 2.Dç2‡

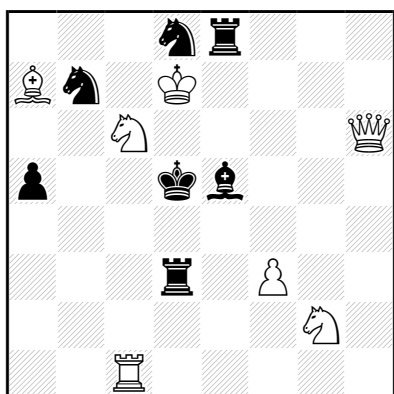
1...Fé6 2.Cf7‡

o

1...Fé8 2.Tç8‡
1...Fg6,Fd5 2.Dxé7‡

Pickabish
Gamage

John M. RICE
Israel Ring Tourney 1995
1° Prix



‡2 (7+7) C+

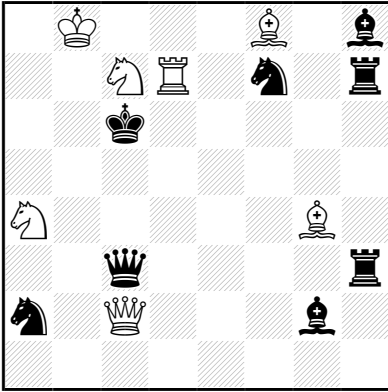
1.Dh4? [2.Dç4,Dé4‡]
mais 1...Fç3!

1.Dh5? [2.Cf4‡]
1...Td4 2.Cé3‡
mais 1...Tç3!

1.Dd2! [2.Cé3‡]
1...F~ 2.Dxd3;Cf4‡
1...Fç3 2.Da2‡
1...Té7+ 2.Cxé7‡
1...Cç5+ 2.Txç5‡

Echecs croisés
Mat par clouage
Clouage direct
Option
Pseudo-Le Grand
Focal
Gamage
Fermeture de ligne blanche par les Noirs
Correction noire

Meindert NIEMEIJER
Thèmes-64 1972
1° Mention d'Honneur



#3 (7+8) C+

1.Td1! [2.Fd7‡]

1...Fd4 2.Dg6+ Cd6/Ff6 3.Dxd6/Fd7‡

1...Td3 2.Dxg2+ Tf3/Td5 3.Fd7/Dxd5‡

(1...Fd5 2.Txd5 [3.Fd7‡] Cf- 3.Td6‡)

Gamage

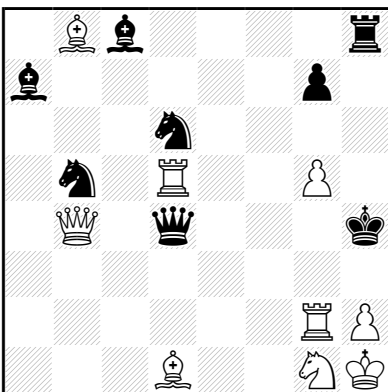
Anti-Bristol noir

Jan HARTONG

Meindert NIEMEIJER

Concours néerlandais 1942

2° Mention d'Honneur



#3 (9+8) C+

1.g6! [2.Cf3+ Rh3 3.Tg3‡]

1...Ff5 2.Dé1+ Df2 3.Dé7‡

1...Cf5 2.Dé7+ Cxé7/Df6 3.Fg3/Dé4‡

(1...Cé4 2.Fg3+ Cxg3+ 3.hxg3‡

1...Df4 2.Dxf4+ Fg4 3.Dxg4,Dg5,Dg3,Txg4‡

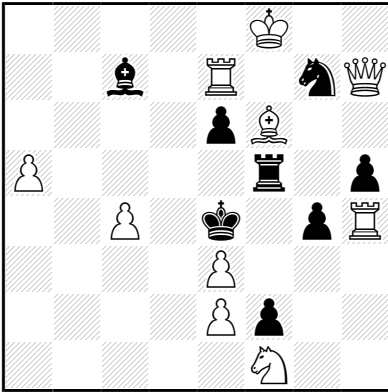
1...Dg4 2.Dxg4+,Txg4+

1...Fg4 2.Dxd4,Dé1+,Txg4+)

Déclouage direct

Auto-clouage direct
Gamage

Julius BUCHWALD
Magyar Sakkvilág 1947
1° Prix

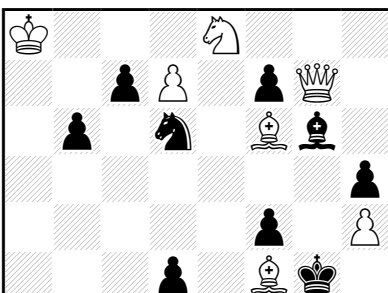


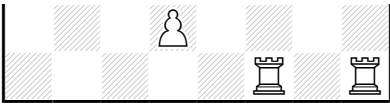
#3 (10+8) C+

1.Rg8! [2.Fd4 [3.Cd2†] Fxa5 3.Cg3†]
1...Ff4 2.Txg4 [3.Txf4†] hxg4 3.Dh1†
1...Fé5 2.Txé6 [3.Txé5†] Cxé6 3.Db7†
1...Fb6 2.axb6 Cé8/é5 3.Txé6/Txé5†
1...é5 2.Fg5 [3.Cd2, Cg3†]
(1...Cé8 2.Txé6+ Fé5 3.Db7, Txé5†)

Ouverture de ligne blanche par les Noirs
Gamage
Mouvement Pelle
Sacrifice blanc
Captures réciproques
Mat par clouage
Auto-déclouage indirect
Clouage direct
Déclouage direct

Byron ZAPPAS
U.S. Problem Bulletin 1987
Mention d'Honneur





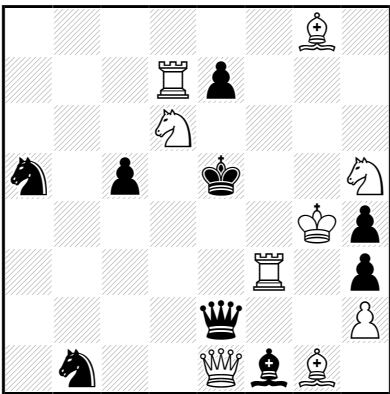
#3 (10+9) C+

1.Fé5? [2.Cf6 [3.Cxh5♯]]
 1...Cé4 2.Dh6 [3.Dxf4♯/Fxf4♯] Cg5 3.Dxg5♯
 1...Cf5 2.Df6 [3.Dg5♯] Ch6,Cé3 3.Dxf4,Fxf4♯
 mais 1...Cxé8!

1.Fd8! [2.Cf6 [3.Cxh5♯]]
 1...Cé4 2.Dd4 [3.Dg1♯] Cf2 3.Dxf2♯
 1...Cf5 2.Da1 [3.Dé1♯]
 1...Cxé8 2.dxe8=D [3.Dé1♯]

Gamage
 Mat par clouage
 Déclouage direct
 Mats (suites) changé(e)s
 Auto-obstruction

Percy Francis BLAKE
Hampstead and Highgate Express 1904
2° Prix



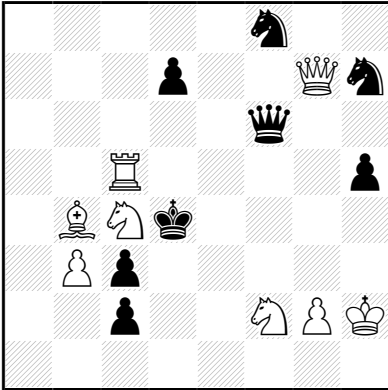
#2 (9+9) C+

1.Cg3! blocus
 1...Cb~ 2.Dç3♯
 1...Cd2! 2.Da1♯
 1...hgx3 2.Dxg3♯
 1...Fg2 2.Dxe2♯
 1...Dxe1 2.Tf5♯
 1...Dé4+ 2.Dxe4♯
 1...Dé3 2.Dxe3♯
 1...éxd6 2.Té7♯
 1...é6 2.Cf7♯
 1...ç4 2.Dxa5♯
 1...Ca~ 2.Cç4♯

Gamage

Mouvement Pelle
Correction noire

György BAKCSI
Sakkélet 1986
2° Recommandé

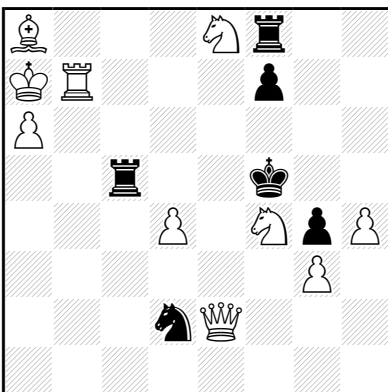


≠2 (8+8) C+

1.Tf5! [2.Fç5†]
1...Cé6 2.Dxd7†
1...d6 2.Da7†
1...Dé5+ 2.Dxé5†
1...d5 2.Tf4†

Gamage

Thomas TAVERNER
Liverpool Mercury 1891
1° Prix



≠2 (10+6) C+

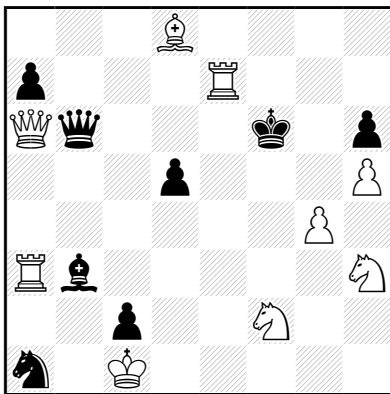
1.Db5! blocus
1...C~ 2.Dd3†
1...Cç4! 2.Db1†
1...Cé4! 2.Dd7†
1...f6 2.Cd6†

o

1...T~ 2.Txf7†
 1...Txb5 2.Txb5†
 1...Té5 2.Dxé5†
 1...Td5 2.Dxd5†
 1...Ré4 2.Dd3†

Gamage
 Clé ampliative
 Clé de sacrifice
 Correction noire

Ernst ALTMAN
Western Daily Mercury 1912



≠2 (9+8) C+

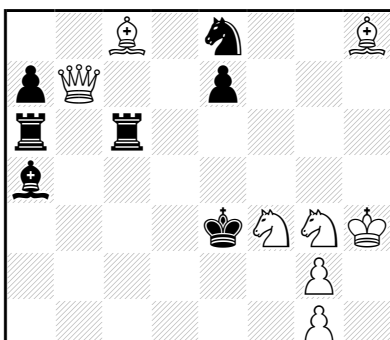
1...d4 2.Cé4†

1.Ch1! blocus

1...d4 2.Df1†
 1...F~ 2.Tf3†
 1...Dxa6 2.Txa6†
 1...Dé6 2.Dxé6†
 1...Dd6 2.Dxd6†
 (1...Dç6 2.Dxç6, Df1†)

Gamage

Frederick GAMAGE
The Brisbane Courier 1915
Mention d'Honneur





≠2

(9+8) C+

1.Tç1! [2.Tç4†]

1...é6 2.Dh7†

1...Cd6 2.Dxé7†

1...Fç3 2.Db1†

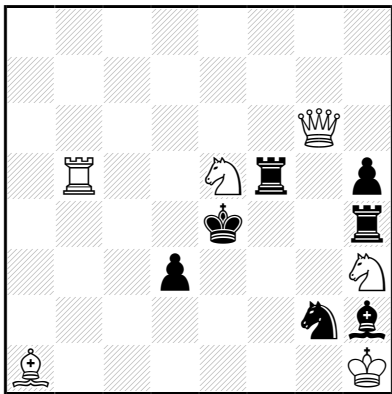
1...Cé3 2.Cf2†

1...Cd2 2.Té1†

1...Fb6 2.Dxç6†

Gamage

**Noël A. BONAVIA-HUNT
The Chess Problem 1944**



≠2

(6+7) C+

1.Cç4! [2.Dxf5†]

1...Fé5 2.Dç6†

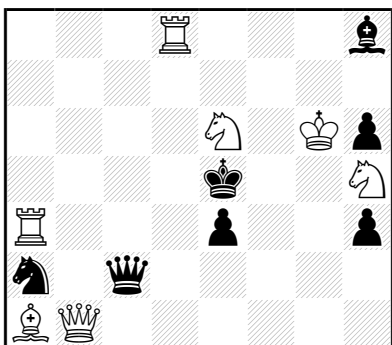
1...Rf3,Ff4 2.Dxg2†

1...Thf4,Cf4 2.Cg5†

1...Cé3 2.Cd2†

Gamage

**Matti MYLLYNIEMI
The Problemist 1971
8° Recommandé**





±2 (7+11) C+

1.Cé4? [2.Td5‡]
mais 1...Céz!

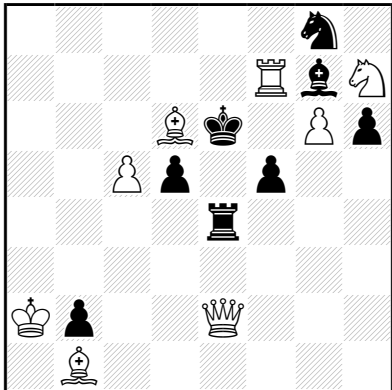
1.Cç5? [2.Td5,Db8‡]
mais 1...Cç4!

1.Cç7? [2.Td5‡]
mais 1...Fç4!

1.Cf8! [2.Td5‡]
1...Fç4 2.Db8‡
1...Cç4 2.Db5‡
1...Céz 2.Dh2‡

Option
Gamage

Albert SERVAIS Revue Belge des Echecs 1945



±2 (8+8) C+

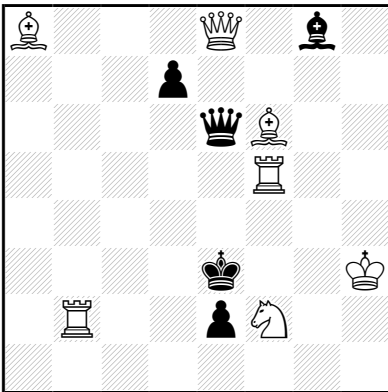
1...f4 2.Dg4‡
1...d4 2.Dç4‡

1.Déz! blocus
1...f4 2.Dh3‡
1...d4 2.Db3‡
1...h5 2.Cg5‡
1...F~ 2.Cf8‡
1...C~ 2.Té7‡
1...T~ 2.Fxf5‡

Mutate
Mats (suites) changé(e)s
Perpetuum mobile

Gamage

Eric E. WESTBURY
Tournoi Meredith, Good Companion 1917
2° Mention d'Honneur



≠2 (7+5) C+

1. Dé7! [2. Dç5‡]

1...d5 2. Da3‡

1...d6 2. Da7‡

1...Dé4 2. Dxé4‡

1...Dés5 2. Dxés5‡

1...Dxé7 2. Tf3‡

Capture d'une pièce clouante par la pièce clouée

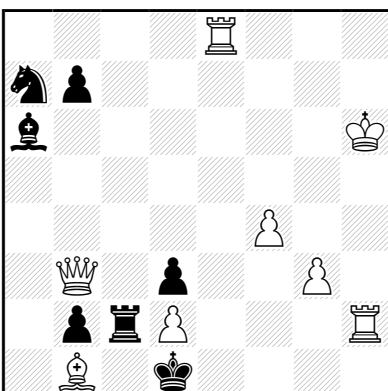
Captures réciproques

Déclouage direct

Promotion

Gamage

Friedrich CHLUBNA
après Raphaël KOFMAN
Die Schwalbe 1978
1° Prix



≠3

(8+7) C+

1.Té3? [2.Dé6 [3.Té1†]]
mais 1...Fç4!

1.Té4? [2.Dé6 [3.Té1†]]
mais 1...Cç6!

1.Té5! [2.Dé6 [3.Té1†]]
1...Fç4 2.Db6 [3.Dg1†]
1...Cç6 2.Dd5 [3.Dh1†]

Option

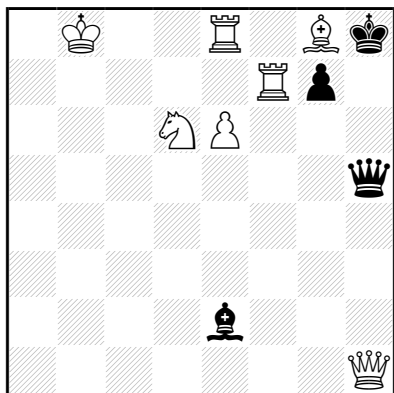
Zepler

Déclouage direct

Gamage

Jean OUDOT

The British Chess Magazine 1963



≠2

(7+4) C+

1.Tç7! [2.Cf7†]
1...g5 2.Da1†
1...g6 2.Fh7†

Anti-Somov A2

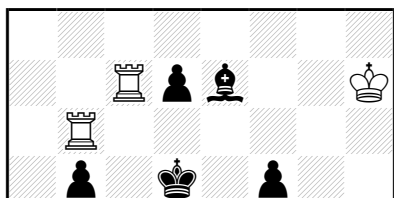
Gamage

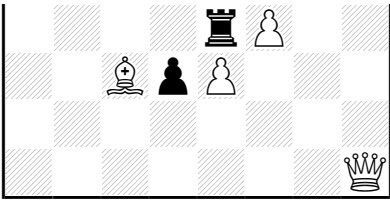
Goethart

Georges GLAESER

Thèmes-64 1959

Recommandé



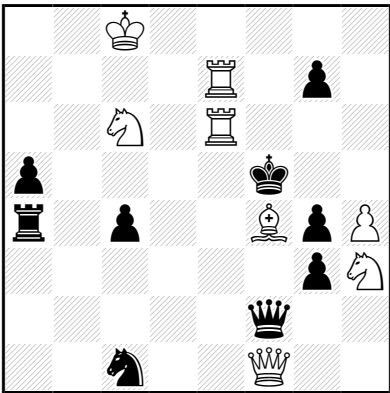


#3 (7+7) C+

1.Dg2! [2.Fé5 [3.Dg8†] Fg5 3.Td6†]
 1...Fç5 2.Da2+ Tç4 3.Da8†
 1...Fd6 2.Dg8+ Té6 3.Da8†
 1...Fd8,Fg5 2.Fd4 [3.Da2,Tç5†]

Gamage

Marjan KOVACEVIC
The Problemist 1995-I
1° Prix



#2 (8+9) C+

1.Fd2? [2.Cd4†]
 mais 1...ç3!

1.Fé3? [2.Cd4†]
 1...Cé2 2.Db1†
 1...ç3 2.Db5†
 mais 1...Cb3!

1.Cg5! [2.Tf7†]
 1...Db2 2.Fd2†
 1...Da7 2.Fé3†
 1...Dd4 2.Cxd4†

Clé ampliative
 Clouage indirect
 Gamage
 Coup critique

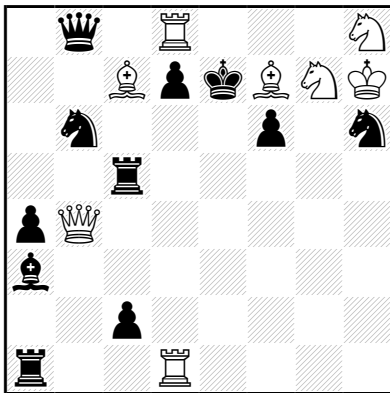
1.Ré7? [2.Txd6♠]
mais 1...ç5!

1.Rd7? [2.Txd6♠]
mais 1...Fh3!

1.Rç7! [2.Txd6♠]
1...Fb4 2.Da2♠
1...Dh2 2.Cxé3♠
1...Fg3 2.Cç3♠
1...ç5 2.Cf4♠

Option royale
Gamage

Barry P. BARNES
Jubilé V. Melnichenko-60 1999
1°-2° Prix e.a.



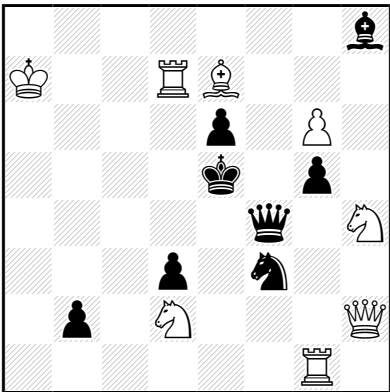
≠2 (8+11) C+

1.Fd5? [2.Cg6,Dé4,Dé1♠]
mais 1...Dxç7!

1.Fa2! [2.Cg6♠]
1...d5 2.Dé1♠
1...Cd5 2.Dé4♠
1...f5 2.Dh4♠
1...Cç4 2.T1xd7♠
1...Dxç7 2.Té8♠
1...Txa2 2.Té1♠

Gamage

György BAKCSI
Schach-Aktiv 1993
3° Prix



±3 (8+8) C+

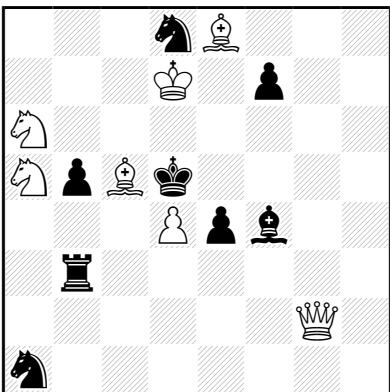
1.Fd8! [2.Fç7+ Rf6 3.Tf7‡]
 1...Cxd2 2.Té1+ Cé4 3.Dxb2‡
 1...Cxh4 2.Txg5+ Cf5 3.Dxh8‡

Gamage

Capture d'une pièce blanche gênante

Ouverture de ligne blanche par les Noirs

Pascal DI SCALA Phénix 1993 (v)



±2 (7+8) C+

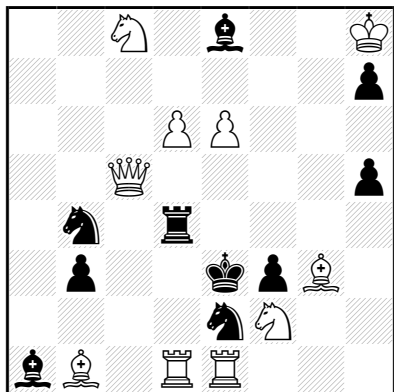
1.Da2! [2.Cb4‡]
 1...é3 2.Dg2‡
 1...Fd2 2.Cç7‡
 1...Cç6 2.Fxf7‡

o

1...Cç2 2.Dxb3†

Clouage direct
Gamage

Udo DEGENER
Siegfried BREHMER
Schach 1991
2° Prix



‡3 (10+10) C+

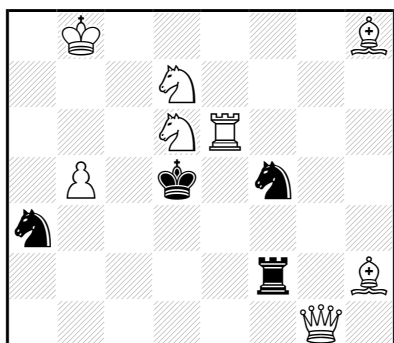
1.Cé7? [2.Cf5†]
mais 1...Fg6!

1.Cb6? [2.Cç4†]
mais 1...Fb5!

1.Fxh7! [2.Fé4 [3.Dg5†] Cd5,Cd3 3.T(x)d3†]
1...Fg6 2.Cb6 [3.Cç4†] Fd3 3.Dç1†
1...Fb5 2.Cé7 [3.Cf5†] Fd3 3.Dç1†
1...Fç6 2.Cé7 [3.Cf5†] Fé4 3.Dg5†
1...Fç3 2.Dxç3+ Td3/Cd3 3.Dé5/Dd2†

Romain
Banny
Gamage

Bo LINDGREN
Thema Danicum 1989
2° Prix





≠2

(9+5) C+

1.Th6! [2.Dg8‡]

1...Cf~ 2.Txd1‡

1...Cd4! 2.Té5‡

1...Cxd6! 2.Fé6‡

1...Cé3! 2.Dd2‡

1...Cç5! 2.Cb6‡

Correction noire

Anti-Gamage

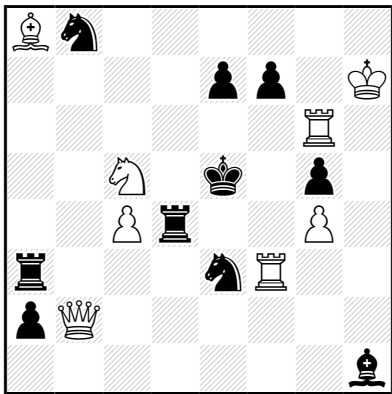
Gamage

Somov B2

Vyacheslav K. PILCHENKO

Springaren 1998-99

2° Prix



≠2

(8+10) C+

1.Fé4? [2.Dh2‡]

mais 1...Fg2!

1.Fd5? [2.Dxb8‡]

mais 1...Tb3!

1.Txf7! [2.Té6‡]

1...Fd5 2.Dxb8‡

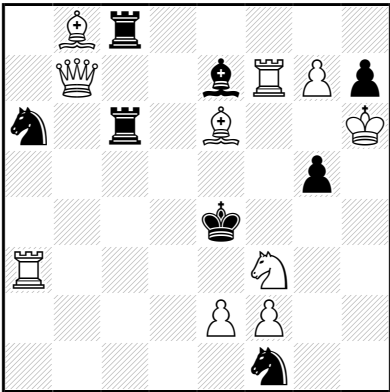
1...Fé4 2.Dh2‡

1...Cf5 2.Txf5‡

1...Ta6 2.Cd3‡

Gamage

Hermann ALBRECHT
Szachista 1938
3° Prix



≠2 (10+8) C+

1.Ta5! [2.Té5†]

1...Fç5 2.Db1†

1...Cç5 2.Db4†

1...Ff6 2.Ff5†

1...Fd6 2.Fd5†

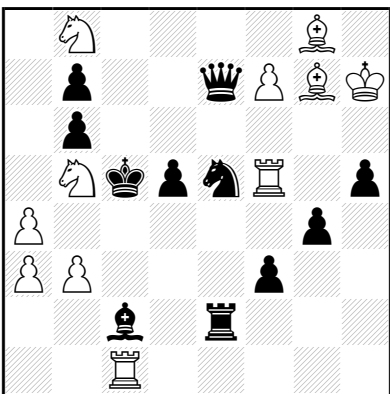
Déclouage indirect

Gamage

Anti-dual

Fermeture de ligne blanche par les Noirs

Lars LARSEN
Arbejder Skak 1944
3° Mention d'Honneur

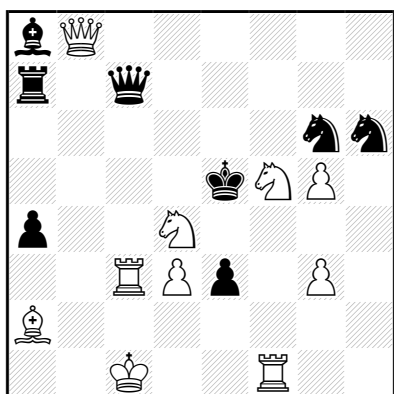


≠2 (11+11) C+

1.f8=D! [2.Dxé7‡]
 1...Cd7 2.Dç8‡
 1...Cg6,Cd3 2.Txd5‡
 1...Cf7 2.Fd4‡
 1...Cç4 2.b4‡
 1...Cç6 2.Cd7‡
 1...Dd6 2.Dxd6‡
 1...Dxf8 2.Fxf8‡

Gamage
 Clé de promotion
 Clouage direct
 Déclouage indirect

Israel A. SCHIFFMANN
The Sports Referee 1928
4° Prix



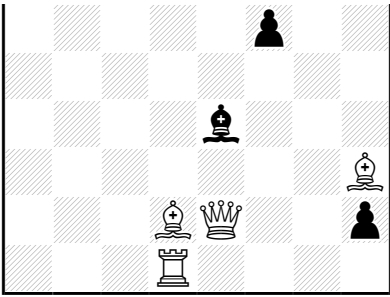
‡2 (10+8) C+

1.Tç6! [2.Db5‡]
 1...Cé7 2.Dh8‡
 1...Tb7 2.Tç5‡
 1...Fb7,Ta5 2.Dxç7‡
 1...Cxf5 2.Cf3‡
 1...Cf4 2.gxf4‡
 1...Dxb8 2.Té6‡
 1...Dd6 2.Dxd6‡
 1...Fxç6 2.Cxç6‡

Gamage
 Capture d'une pièce clouante par la pièce clouée
 Grimshaw

Eugene ROSNER
StrateGems 2001
2° Mention d'Honneur





≠2 (7+7) C+

1.Ff5? [2.Dh5♯]
mais 1...h1=D!

1.Té1? [2.Dh5♯]
mais 1...Fé5!

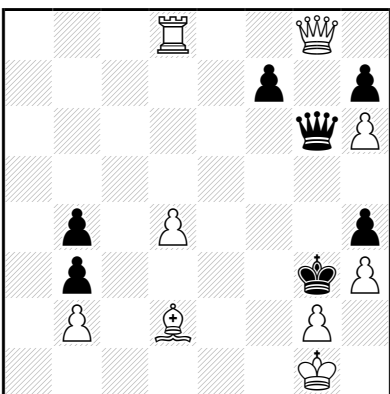
1.Dg4? [2.Dxd7♯]
mais 1...Ff5!

1.Fd~? [2.Fxd7♯]
mais 1...Fd6!

1.Fa5! [2.Fxd7♯]
1...f5 2.Dh5♯
1...d5 2.Db5♯
1...d6 2.Dxe4♯
1...Fd6 2.Cxd6♯

Gamage

Stefano GALLETTI
Constantinos PAIZIS
L'Italia Scacchistica 1996



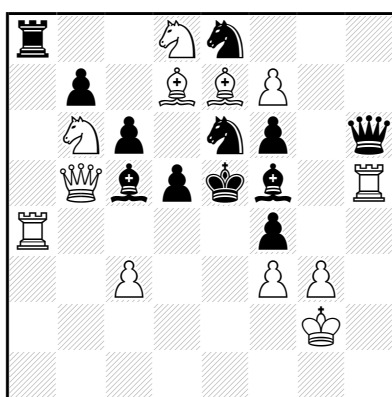
≠2 (9+7) C+

1.Ta8! blocus
1...f6 2.Db8♯
1...f5 2.Dxb3♯
1...Dg4 2.Dxg4♯

1...Dg5 2.Dxg5†
 1...Dxg8 2.Txg8†
 1...Dg7 2.Dxg7†

Bristol
 Gamage
 Capture d'une pièce clouante par la pièce clouée
 Duel Noir-Blanc

Roger LEPAGE
dédié à J. Oudot
diagrammes 1974
Mention

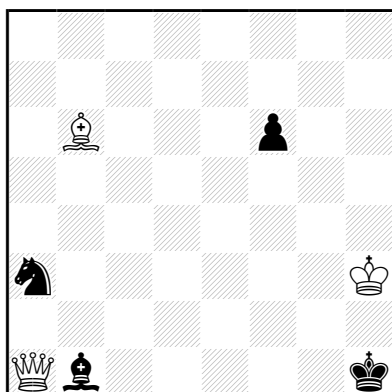


≠2 (12+12) C+

1.Fç8! [2.Cd7†]
 1...d4 2.Dé2†
 1...Fxb6 2.Té4†
 1...Fxé7 2.Cç4†
 1...Cxd8,Cf8 2.Txf5†
 1...Cg5 2.gxf4†

Gamage
 Auto-clouage indirect

Giorgio GUIDELLI
L'Alfiere di Re 1924



±2

(3+4) C+

1.Rg3! blocus

1...f5 2.Dh8†

1...C~ 2.Dxb1†

1...Cç2! 2.Da8†

Coin à coin (diagonal)

Ouverture de ligne blanche par les Blancs

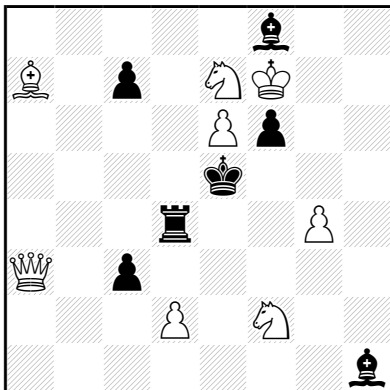
Ouverture préventive

Ouverture de ligne blanche par les Noirs

Correction noire

Gamage

Frederik W. NANNING Die Schwalbe 1952



±2

(8+7) C+

1...Fd5 2.Cg6†

1.Dxç3! [2.Dxd4†]

1...Fd5 2.Dxç7†

1...Fé4 2.Dg3†

1...ç5 2.Fb8†

1...Rd6 2.Dç5†

1...Rf4 2.Dé3†

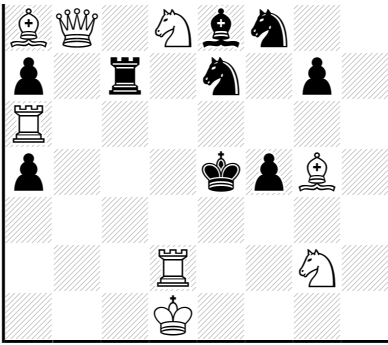
Clé ampliative

Clouage direct

Gamage

Udo DEGENER Europa Rochade 1990-91 4° Prix





≠2 (8+10) C+

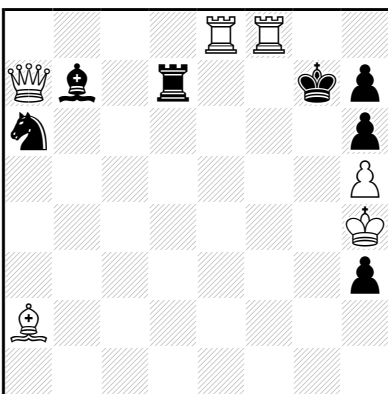
1. Tc5? [2. Db1†]
mais 1...Cd4!

1. Fc5? [2. Db1†]
mais 1...Cé5!

1. Ré2! [2. Ff3†]
1...Fç5 2. Db1†
1...Cç5! 2. Db4†
1...Cfç5, Cé5 2. T(x)é5†
1...Cég5, Cd4+ 2. T(x)d4†

Grimshaw blanc
Gamage
Correction noire

Erio SALARDINI The Problemist 1930



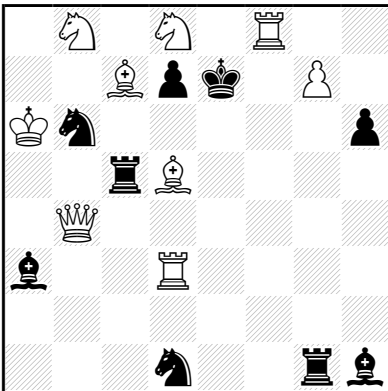
≠2 (6+7) C+

1. Tf5! [2. Tg8†]
1...Td5 2. Dg1†
1...Fd5 2. Dd4†
1...Tf7, Td8 2. T(x)f7†
1...Td4+ 2. Dxd4†

Grimshaw
Demi-clouage noir

Game

Marian WROBEL
L'Italia Scacchistica 1949
2° Prix



#2 (9+9) C+

- 1.Fg2!** [2.Fd6±]
1...d5 2.Dh4±
1...Cd5 2.Dé4±
1...Cç4,Cç8 2.Txd7±

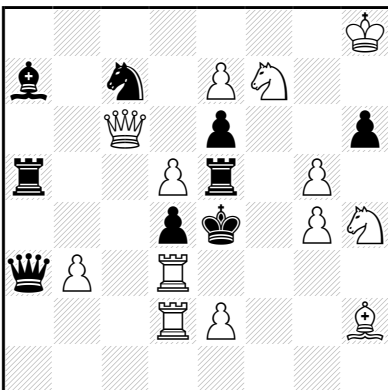
Déclouage direct

Game

Ouverture de ligne blanche par les Blancs

Fermeture de ligne blanche par les Noirs

Stepan DEMIDYUK
diagrammes 1994
1° Prix

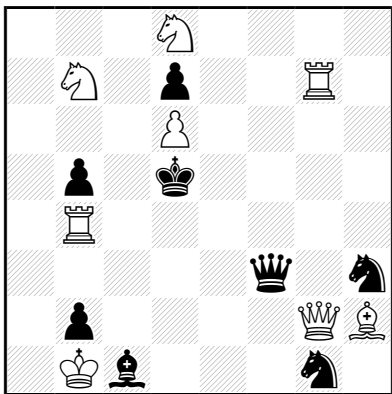


±3 (13+9) C+

1.Cg2! [2.Té3+ dxé3 3.Dç2‡]
1...Téxd5 2.Tf3 [3.Tf4‡] é5/hxg5/Dd6 3.Dg6/Cxg5/Cxd6‡
1...Taxd5 2.Txd4+ Fxd4 3.Dç2‡
1...Dç5 2.Txd4+ Dxd4 3.Cd6‡
1...Fç5 2.Cd6+ Fxd6 3.Txd4‡

Nietvelt (parade)
Gamage
Wurzburg-Plachutta

Krikor KHAIRABEDYAN
Shakhmatna Misl 1998
1° Prix



±2 (8+8) C+

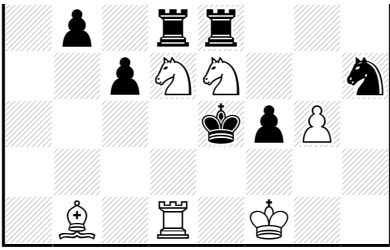
1.Dç2? [2.Dç5‡]
1...Dd3 2.Dxd3‡
1...Dé4 2.Dxé4‡
1...Fé3 2.Db3‡
mais 1...Dé3!

1.Té7! [2.Té5‡]
1...Cf4 2.Dg5‡
1...Ff4 2.Dg8‡
1...Dé4+ 2.Dxé4‡

Dalton
Gamage

Eric M. HASSBERG
Jaarboek van den NBvP 1945-46
3° Recommandé





≠2 (7+8) C+

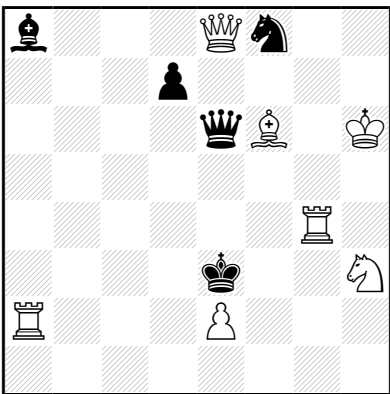
1...Té~ 2.Cç2†
 1...Txd4! 2.Té1†

1.Df6! [2.Df4†]

1...C~ 2.Dxf3†
 1...Cf5! 2.Dg5†
 1...Té~ 2.Té1†
 1...Txé4! 2.Cç2†

Somov B2
 Gamage
 Correction noire

Renato CABRAL
après Alain C. WHITE
Problem 1951 (v)



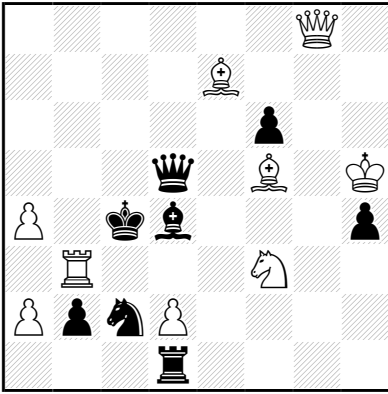
≠2 (7+5) C+

1.Dé7! [2.Dç5†]

1...d5 2.Da3†
 1...d6 2.Da7†
 1...Dé4 2.Tg3†
 1...Dé5 2.Fg5†
 1...Dxé7 2.Fd4†

Gamage
 Mouvement Pelle

Alberto MARI
Valve Tournay, The Chess Amateur 1928
1° Prix



#2

(9+8) C+

1.Dé6! [2.Déz2‡]

1...F~ 2.Tç3‡

1...Fç5! 2.Da6‡

1...Fé5! 2.Fd3‡

1...Té1 2.d3‡

1...Txd2 2.Cxd2‡

1...Dxé6 2.Fxé6‡

1...C~ 2.Tb4‡

Anti-Gamage

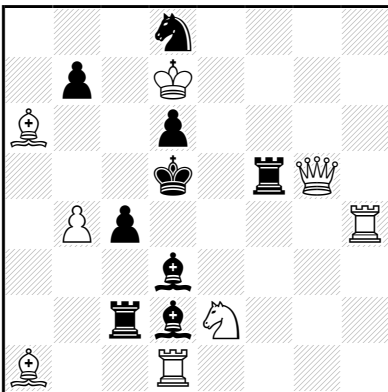
Correction noire

Gamage

Alberto MARI

The Brisbane Courier 1921

1° Prix



#2

(8+9) C+

1.Ff6! [2.Td4‡]

1...Cç6 2.Dg8‡

1...Ff4 2.Dg2‡

1...Fé3, Fxb4 2.Dxf5‡

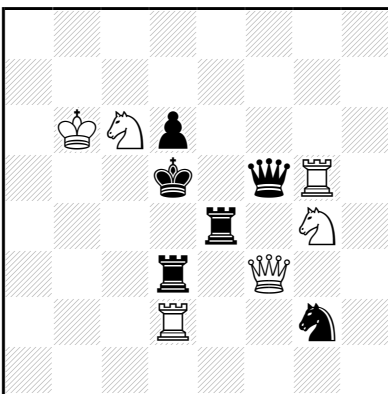
1...Fç3 2.Fxç4‡

1...Fé4 2.Cf4‡

1...Cé6 2.Fxb7‡

Gamage
 Demi-clouage noir
 Mat par double clouage
 Gamage bicolore

William LANGSTAFF
Good Companion 1924
2° Prix

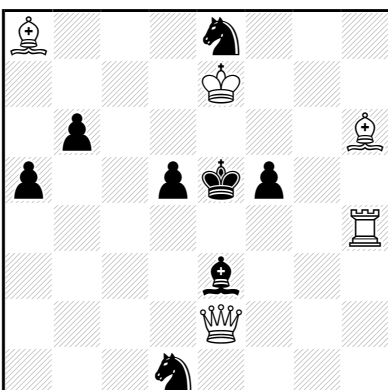


#2 (6+6) C+

- 1.Cf2!** [2.Dxe4†]
 1...Tdd4 2.Db3†
 1...Dé5 2.Df7†
 1...Rç4 2.Dxd3†
 1...Ré6 2.Dxf5†

Gamage
 Holzhausen
 Mouvement Pelle

François GOUZE
Europe Echecs 1986



±2 (5+8) C+

1.Ta4! [2.Ff4±]

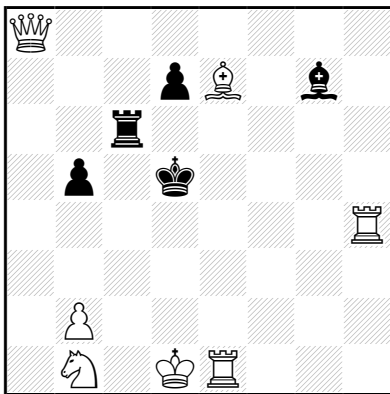
1...f4 2.Dh5±

1...d4 2.Db5±

Coup critique

Gamage

Lars LARSEN
Arbejder Skak 1944
Prix



±3 (7+5) C+

1.b4! [2.Fç5 [3.Da2±]]

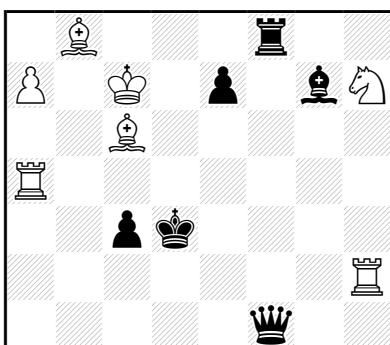
1...Fd4 2.Da2+ Tç4 3.Dg2±

1...Fé5 2.Dg8+ Té6 3.Dg2±

Gamage

Gamage bicolore

Knud HANNEMANN
Copenhagen - Provinces, Skakbladet 1942
1° Place



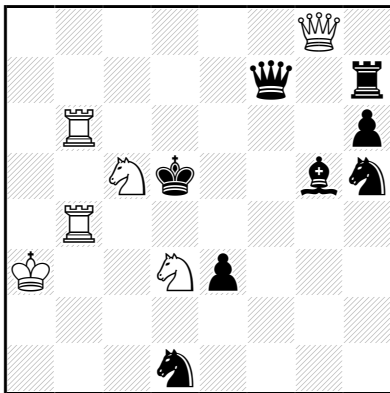


±3 (9+7) C+

1.Rb7! [2.Td5+ Ré4 3.Cg5±]
 1...é6 2.Dxg7+ Df6/Tf6/é5 3.Dd7/Dd7,Fé5/Dd7,Dxé5,Fxé5±
 1...é5 2.Dg4+ Df4,Tf4/é4 3.Dd7/Dxé4,Dd7,Td5±
 1...ç3 2.Dd1+ Dd2,Rç4/Cd3 3.Da4/Dxd3±
 1...Tf3 2.Dg4+ Tf4/Ré3,Rd3 3.Dd7/Dé4,Dé4±
 1...Tf5 2.Dxg7+ Tf6/é5/Té5 3.Fé5/Dd7/Dxé5,Fxé5±
 (1...Txb8+ 2.axb8=D [3.Dxf2,Dd8,Df4,Da7±])

Auto-clouage direct
 Auto-clouage indirect
 Déclouage direct
 Anti-Bristol noir
 Gamage

Udo DEGENER
Troll 1993-94
3°-4° Mention d'Honneur



±2 (6+8) C+

1.Cb7? [2.Td6±]
 mais 1...Fé7!

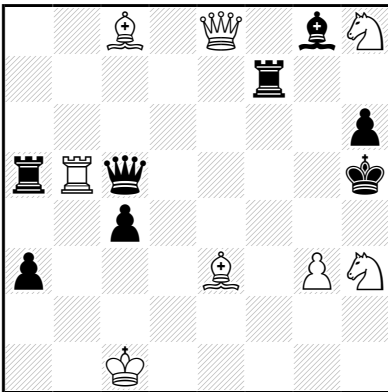
1.Cé4? [2.Td6±]
 mais 1...Ff4!

1.Cb3! [2.Td4±]
 1...Fé7 2.Da8±
 1...Ff6 2.Dg2±

Mats miroir
 Option
 Gamage

Wieland BRUCH
Udo DEGENER
Troll 1993-94

3°-4° Mention d'Honneur



≠2 (8+8) C+

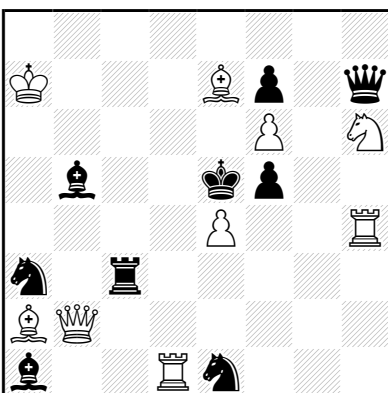
1.Ff4? [2.Dé2♠]
mais 1...Dé5!

1.Cf2? [2.Fg4♠]
mais 1...Df5!

1.Ff2! [2.g4♠]
1...Dg5+ 2.Cf4♠
1...Df5 2.Dé2♠

Mat par double clouage
Mouvement Pelle
Gamage
Gamage bicolore

Pavel E. KONDRATIEV Troll 1994



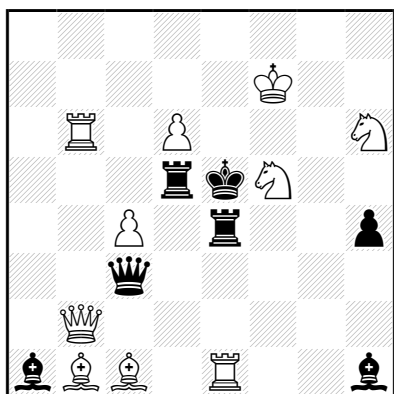
≠2 (9+9) C+

1.éxf5! [2.Td5♠]
1...Fç4,Fç6 2.Db8♠
1...Cd3 2.Dé2♠
1...Fd3 2.Dh2♠
1...Dxf5 2.Cxf7♠

1...Cç4 2.Dxb5†

Gamage

Yves CHEYLAN
58° T.T. Problem 1978
Recommandé



#2 (10+7) C+

1.Tb5! [2.Txd5†]

1...Té~ 2.Cg4†

1...Té3! 2.Dh2†

1...Txb5 2.Dxb5†

1...Tç5 2.Txç5†

Correction noire

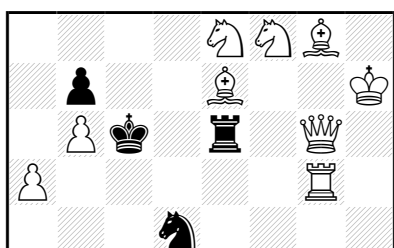
Gamage

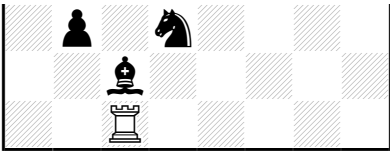
Mat par clouage

Capture d'une pièce clouante par la pièce clouée

Holzhausen

Yves CHEYLAN
Schweizerische Arbeiter Schachzeitung 1973



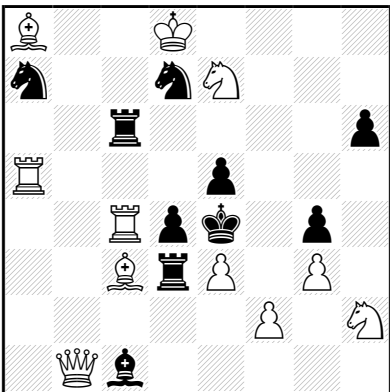


#2 (10+7) C+

1.Cç7! [2.Dé8†]
 1...C3~ 2.Tç5†
 1...Cé5! 2.Dé4†
 1...Txg6 2.Fd5†
 1...Td6! 2.Dxd6†

Clouage indirect
 Gamage
 Anti-Gamage
 Anti-Somov A1
 Correction noire
 Mat par clouage
 Capture d'une pièce clouante par la pièce clouée

**Yves CHEYLAN
 diagrammes 1973**

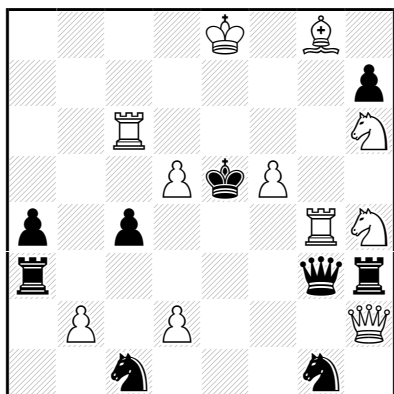


#2 (11+10) C+

1.éxd4! [2.dxe5†]
 1...Cd~ 2.Txe5†
 1...Cç5! 2.d5†
 1...Fé3 2.Dh1†
 1...Cb5 2.Fxç6†
 1...éxd4 2.Txd4†

Gamage
 Goethart
 Cristoffanini
 Mouvement Pelle
 Batterie blanche
 Captures réciproques
 Mat par double clouage
 Clouage indirect

Lars LARSEN
Skakbladet 1942



≠3 (11+9) C+

1.b4! [2.Cf7+ Rxd5 3.Tç5‡]

1...axb3 e.p., Té3 2.d4+ çxd3 e.p. 3.Db2‡

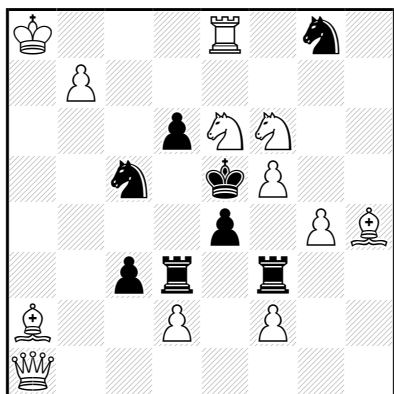
1...Txb4 2.d4+ çxd3 e.p. 3.Dxg3‡

1...Cb3, Cd3 2.Cf3+ Cxf3 3.Dé2‡

Prise en passant

Gamage

Eigil PEDERSEN
Magasinet 1943
1°-2° Prix



≠3 (12+8) C+

1...é3 2.Dxç3+ Txç3/Td4 3.d4/Dxd4‡

1.Dé1! [2.Dxé4+ Cxé4 3.Cd7‡]

1...Tfé3 2.f4+ éxf3 e.p. 3.Dg3‡

1...Tdé3 2.d4+ éxd3 e.p. 3.Dxç3‡

1...é3 2.Dxé3+ Tfxé3/Tdxé3/Cé4 3.f4/d4/Cd7, Dxé4‡

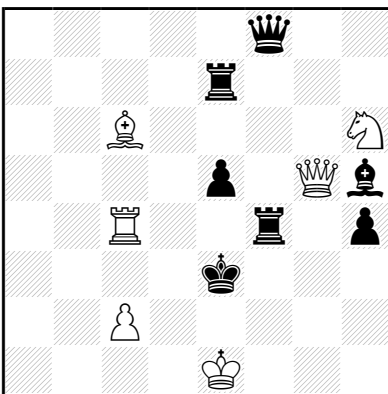
1...Tf4 2.Cd8+ Cé7, Cé6, Rd4 3.Cç6‡

1...Td4 2.Cf8+ Cé7, Cé6, Rf4 3.Cg6‡

1...Cxf6 2.Fg3+ Txg3/Tf4 3.f4/Fxf4‡

Défenses sur la même case
 Mat par clouage
 Prise en passant
 Gamage
 Ouverture de ligne blanche par les Blancs
 Batterie blanche
 Batterie de Siers

Lucio MATTEI
L'Italia Scacchistica 1947

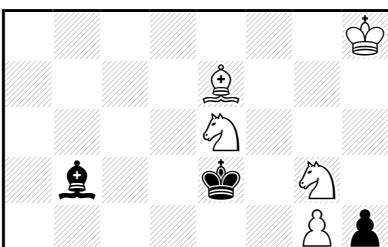


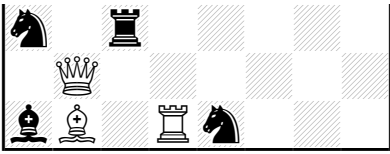
≠2 (6+7) C+

- 1.Fh1!** [2.Té4†]
- 1...Ff3 2.Dg1†
- 1...é4 2.Dç5†
- 1...Fg6 2.Cg4†
- 1...Da8 2.Cf5†
- 1...Df5 2.Cxf5†

Mat par clouage
 Coup critique
 Gamage

Kenneth S. HOWARD
The Western Morning News 1936



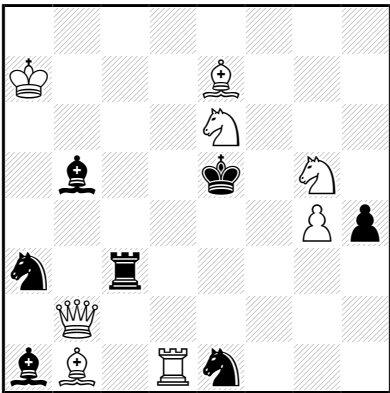


≠2 (8+7) C+

- 1.Fa2!** [2.Td5†]
 1...Cd3 2.Dé2†
 1...Fd3 2.Dh2†
 1...Fç4,Fç6 2.Db8†
 1...Cç4 2.Dxb5†

Gamage
 Déclouage direct

Sándor HERTMANN
Nationaltidende 1925

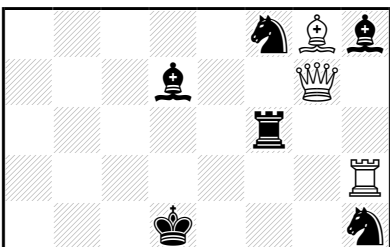


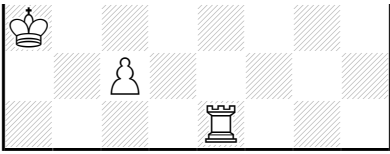
≠2 (8+7) C+

- 1.Fa2!** [2.Td5†]
 1...Cd3 2.Dé2†
 1...Fd3 2.Dh2†
 1...Fç4,Fç6 2.Db8†
 1...Cç4 2.Dxb5†

Déclouage direct
 Gamage

Jan HARTONG
Good Companion 1919



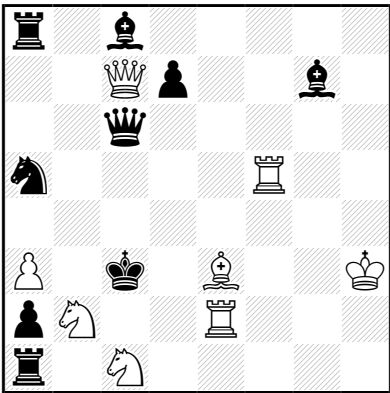


≠2 (6+6) C+

- 1.Rb4!** [2.Td5‡]
 1...Cf5 2.Dg4‡
 1...Cé6 2.Dxd7‡
 1...Ff5 2.Dg1‡
 1...Fé6,Fç6 2.Da7‡

Mats miroir
 Clé désampliative
 Gamage

Alberto MARI
Il Giornale di Genova 1928

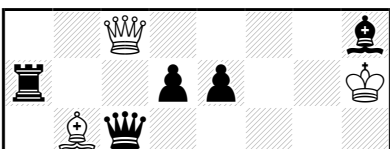


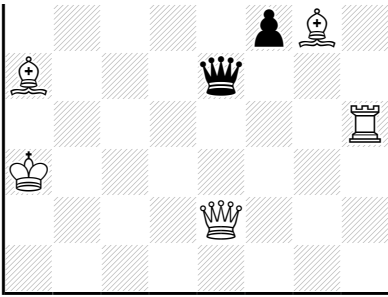
≠2 (8+9) C+

- 1.Ff2!** [2.Tf3‡]
 1...d5 2.Dg3‡
 1...d6 2.Dxg7‡
 1...Fh6 2.Dé5‡
 1...Fd4 2.Fé1‡
 1...Fa6 2.Dxa5‡
 1...Cç4 2.Cd1‡

Mat par clouage
 Gamage

Alberto MARI
Parallèle 50 1949





≠2 (7+5) C+

1.Dé4! blocus

1...d5 2.Da4‡

1...d6 2.Dç6‡

1...f5 2.Dxé5‡

1...Fyg6 2.Dxg6‡

1...Dxé4 2.Txé4‡

1...Dé7+ 2.Dxé7‡

1...Dé6 2.Da8‡

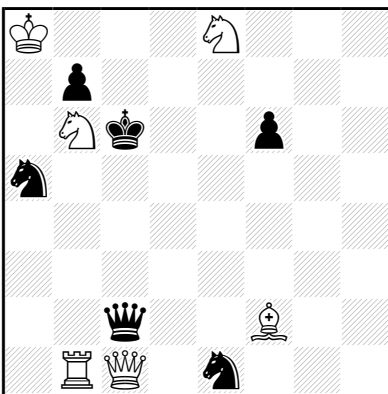
Mat par clouage

Gamage

Mouvement Pelle

Echecs croisés

Ferenc FLECK
Panoráma 1952
4° Prix



≠2 (6+6) C+

1...f5 2.Dh6‡

1...Cd3 2.Dh1‡

1.Da3! [2.Dd6‡]

1...Cb3 2.Da4‡

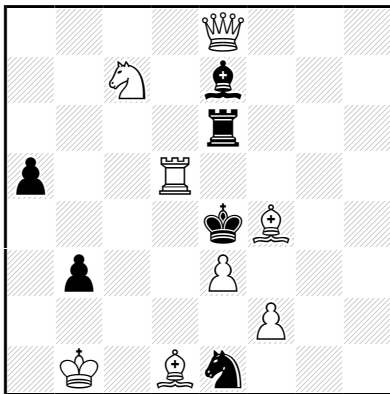
1...Cç4, Db2, Dç5, Db3, Dd1, Dxb1, Dd3 2.Dç5‡

(1...Dd2 2.Da4, Dç5‡)

Gamage

Déclouage direct

Erio SALARDINI
Il Due Mosse 1956

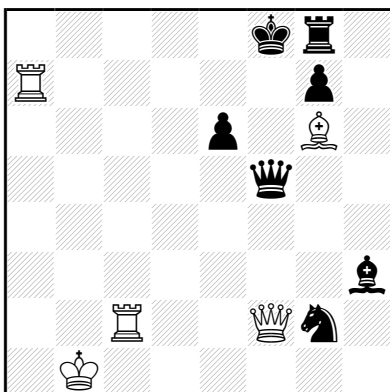


≠2 (8+6) C+

1.Fg4! [2.Td4‡]
 1...Td6 2.Da4‡
 1...Ff6 2.Dg6‡
 1...Fç5 2.Dxé6‡
 1...Cç2 2.f3‡
 1...Cf3 2.Ff5‡

Gamage

A. WOSTYN
De Problemist 1930



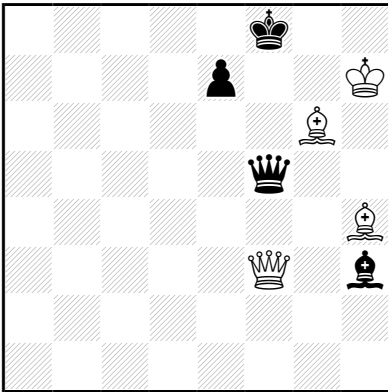
≠2 (5+7) C+

1.Df3! [2.Da8‡]
 1...é5 2.Da3‡
 1...Dxf3, Df4, Df6 2.Tç8‡
 (1...Df7 2.Dxf7, Tç8‡)

Capture d'une pièce clouante par la pièce clouée
 Mat par clouage
 Déclouage direct
 Gamage

Anti-Gamage

Kenneth S. HOWARD
American Chess Bulletin 1939

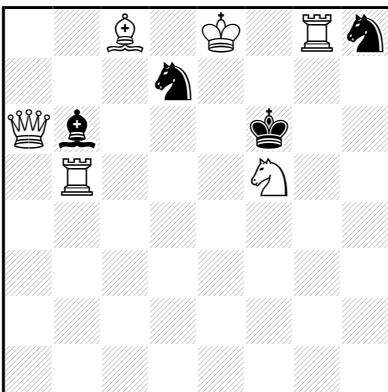


≠2 (4+4) C+

1.Fg5! [2.Fh6‡]
1...Df7+ 2.Dxf7‡
1...é5 2.Da3‡
1...é6 2.Da8‡

Gamage
Mouvement Pelle
Echecs croisés

Pieter TEN CATE
De Maasbode 1950



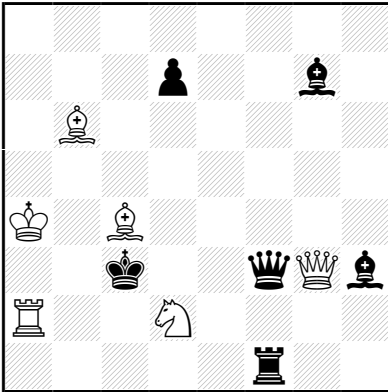
≠2 (6+4) C+

1.Cé7! blocus
1...Cd~ 2.Tf5‡
1...Cé5! 2.Cd5‡
1...Cç5! 2.Da1‡
1...Ch~ 2.Tg6‡
1...Ré6 2.Dxb6‡

Mat par clouage
Correction noire

Gamage
Somov B2

Károly CSASZI
Magyar Sakkélet 1977



#2 (6+6) C+

1.Féz! [2.Cé4†]

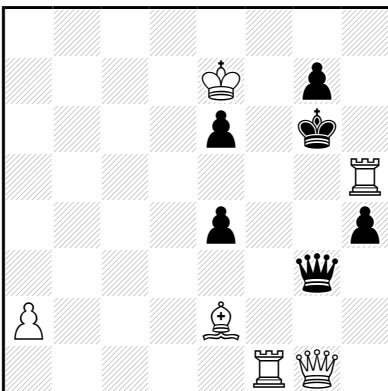
1...Ff5 2.Dxg7†

1...d5 2.Dç7†

1...Dd3 2.Dxd3†

Mat par clouage
Gamage

József KORPONAI
Elet es Tudomány 1977
2° Prix



#2 (6+6) C+

1.Ta1! blocus

1...é3 2.Db1†

1...é5 2.Db6†

1...h3 2.Dxg3†

1...Dxg1 2.Txg1†

1...Dg2 2.Dxg2†

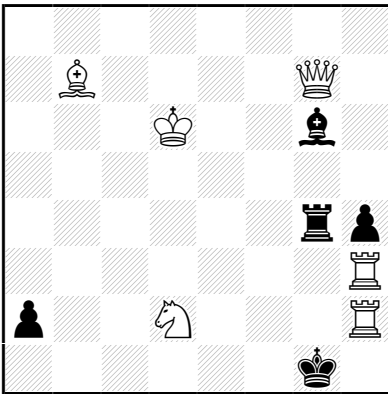
1...Dg5+ 2.Dxg5†

1...Dg4 2.Dxg4†

o

Duel Noir-Blanc
 Gamage
 Bristol
 Capture d'une pièce clouante par la pièce clouée

József KORPONAI
Problem 1980

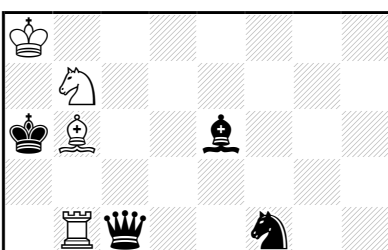


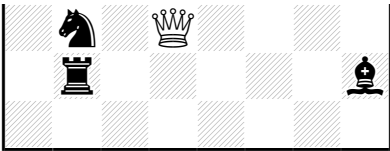
≠2 (6+5) C+

1.Téz! [2.Th1†]
 1...Fé4, Td4+ 2.D(x)d4†
 1...Té4 2.Da1†
 1...Tg2 2.Txg2†

Grimshaw
 Gamage
 Demi-clouage noir

Charles W. SHEPPARD
Chess Life 1955-56
Recommandé





≠2 (5+7) C+

1.Fé3! [2.Tb6‡]

1...C~ 2.Da3‡

1...Cç5! 2.Dd6‡

1...Ca5! 2.Cç5‡

1...Cd5 2.Dxç4‡

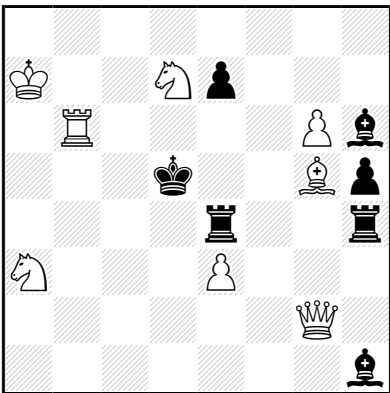
1...Db5 2.Dxb5‡

Mat par clouage

Correction noire

Gamage

Demetrio GUSSOPULO Sinfonie Scacchistiche 1970



≠3 (8+7) C+

1.g7! [2.g8=D+,g8=F+] Fxg7 2.Fxé7 [3.Td6‡] Fd4/Fé5 3.Da2/Dg8‡

Clouage direct

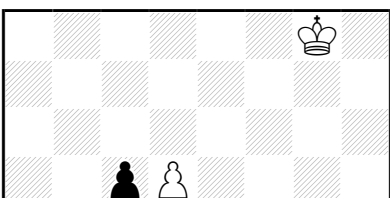
Déclouage direct

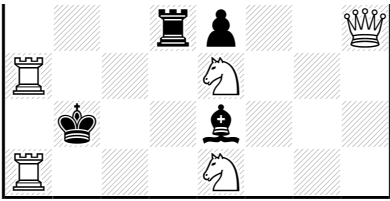
Gamage

Ouverture de ligne blanche par les Blancs

Ouverture de ligne blanche par les Noirs

Dieter MULLER Sinfonie Scacchistiche 1976





±2 (7+5) C+

1.Df6! blocus

1...F~ 2.Cd1;Cç4‡

1...ç4 2.Db6‡

Mat par clouage

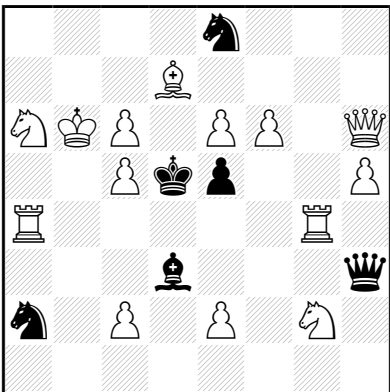
Clouage direct

Option

Gamage

Focal

Albert SALLAY Sinfonie Scacchistiche 1980



±2 (14+6) C+

1...Fxa6 2.é4‡

1...Ff5 2.ç4‡

1.Dg5? [2.Cf4,Tgd4,Tad4‡]

mais 1...Fç4!

1.Dd2! [2.é4,ç4‡]

1...é4 2.Dg5‡

1...Dxg4 2.Cé3‡

1...Cd6 2.Cç7‡

1...Cç3 2.Cb4‡

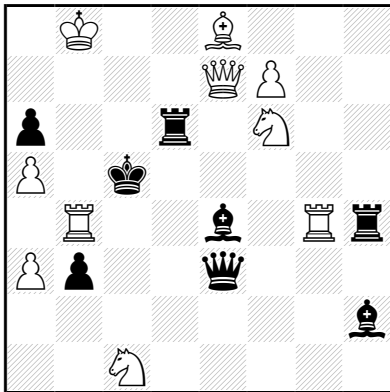
Clouage direct

Rudenko

Gamage

Lars LARSEN

Sinfonie Scacchistiche 1983



#2 (10+8) C+

1.f8=C! [2.Cé6‡]

1...Fé~ 2.Tbç4‡

1...Fç6! 2.Da7‡

1...Fd5! 2.Dxé3‡

1...Fd3! 2.Cxb3‡

Mat par clouage

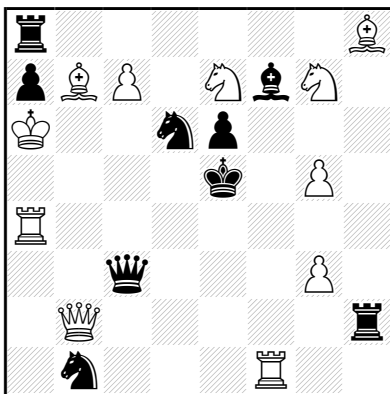
Déclouage direct

Clé de promotion

Correction noire

Gamage

Ansgar VOSSHENRICH Sinfonie Scacchistiche 1989



#2 (11+9) C+

1.Td1! [2.Cç6‡]

1...Cç4 2.Db5‡

1...Txb2,Td2 2.Cé8‡

1...Fé8 2.Ch5‡

1...Dd4 2.Dxd4‡

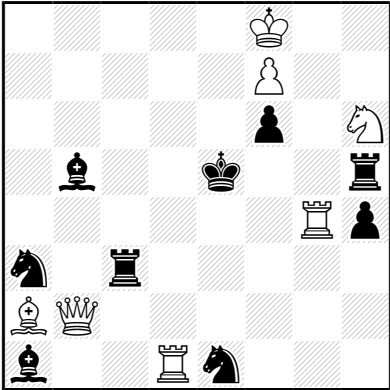
1...Cd2 2.Dxç3‡

Mouvement Pelle

Batterie blanche

Mat par clouage
Auto-déclouage indirect
Déclouage direct
Gamage

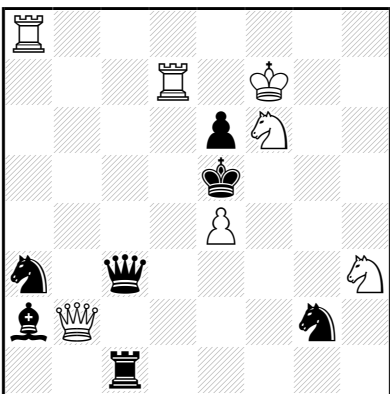
Antonio F. ARGUELLES
Julio PERIS PARDO
La Correspondencia de Valencia 1932



♯2 (7+9) C+

1.Ré7! [2.Td5♯]
1...Fç4,Fç6 2.Db8♯
1...Cç4 2.Dxb5♯
1...Cd3 2.Dé2♯
1...Fd3 2.Dh2♯
Déclouage direct
Promotion
Gamage

Stanislaw GEBURA
Phénix 2001



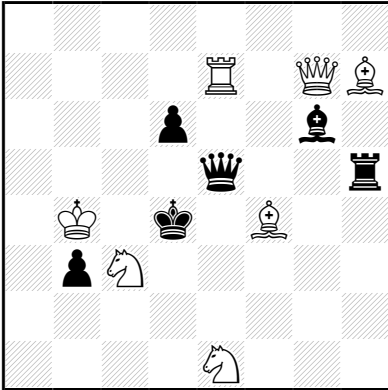
♯2 (7+7) C+

1.Ta4! [2.Cg4♯]
1...Cé3 2.Dh2♯
1...Fç4 2.Db8♯
1...Cç4 2.Db5♯
1...Tfi 2.Dxç3♯

o

1...Dd4 2.Dxd4†
 Mouvement Pelle
 Clouage direct
 Déclouage direct
 Gamage

Marian WROBEL
L'Alfiere di Re 1925

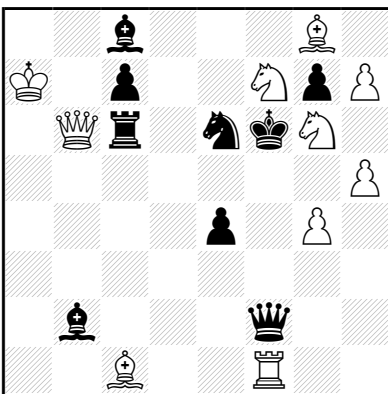


≠2 (7+6) C+

1.Té6! [2.Txd6†]
 1...Fé4 2.Dg1†
 1...Ff7 2.Cf3†
 1...Dxg7,Df6 2.Fé3†
 1...d5 2.Da7†

Capture d'une pièce clouante par la pièce clouée
 Mat par clouage
 Auto-déclouage direct
 Déclouage direct
 Gamage

Froim SIMKHOVICH
L'Alfiere di Re 1925



≠2 (10+9) C+

1.Cg5! [2.Cxé4†]
 1...Cç5 2.Dxb2†

o

1...Cg5 2.Fxb2†

1...Tç4 2.Txf2†

Demi-clouage noir

Clé de sacrifice

Mat par double clouage

Auto-déclouage indirect

Déclouage direct

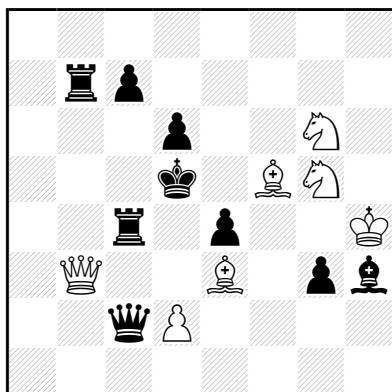
Déclouage indirect

Gamage

Karl A.K. LARSEN

Tidskrift för Schack 1921

1° Mention d'Honneur



≠2

(7+9) C+

1.d4! [2.Cé7†]

1...ç5 2.Dxb7†

1...éxd3 e.p.+ 2.Fé4†

1...ç6 2.Cf4†

Echecs croisés

Umnov

Batterie noire

Mat par clouage

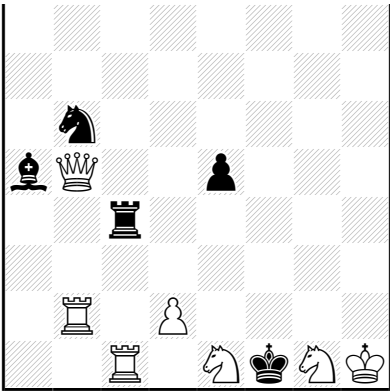
Prise en passant

Exposition du Roi blanc à l'échec

Gamage

Constantin GAVRILOV

Revista Româna de Sah 1935



#2 (7+5) C+

1.Tb3! [2.Tf3‡]

1...é4 2.Df5‡

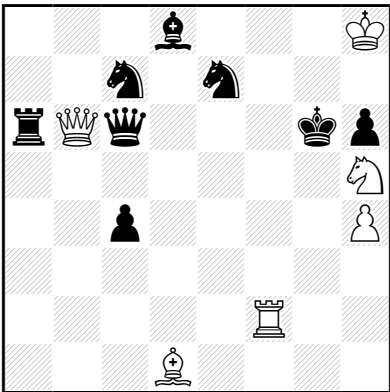
1...Fç3 2.Cd3‡

Batterie blanche

Gamage

Goethart

Giorgio GUIDELLI
Good Companion 1916
1° Mention d'Honneur



#2 (6+8) C+

1.Tf8! [2.Cf4‡]

1...Céd5 2.Db1‡

1...Cçd5 2.Dg1‡

1...Df6+ 2.Txf6‡

1...Cé6 2.Tf6‡

Mouvement Pelle

Echecs croisés

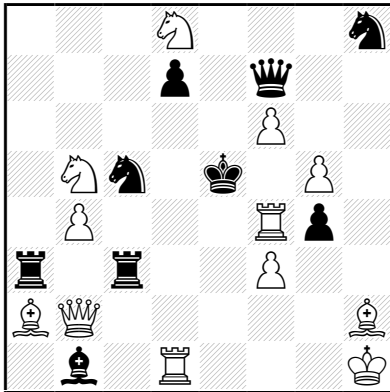
Déclouage direct

Gamage

Leonid I. KUBBEL
Krasnaya gazeta 1934

Correction noire
 Gamage
 Demi-clouage noir
 Mat par double clouage
 Déclouage direct

Knud HANNEMANN
Danemark - Pologne 1933
1° Prix

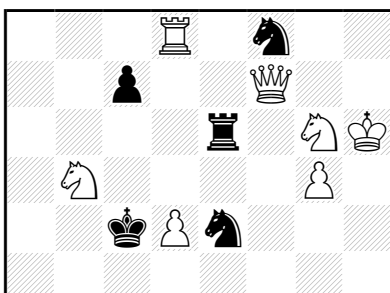


≠2 (12+9) C+

- 1.fxg4!** [2.Tç4‡]
 1...Fd3 2.Td4‡
 1...Cd3 2.Dé2‡
 1...Cg6 2.Cxf7‡
 1...Cé6,Dh7,Dxf6,Dh5, Dd5+ 2.T(x)d5‡
 1...Cé4 2.Tf5‡
 1...Fé4+ 2.Tf3‡

Gamage
 Goethart
 Echecs croisés
 Echec double
 Batterie blanche
 Mat par clouage
 Clouage direct
 Exposition du Roi blanc à l'échec

Viggo KLAUSEN
Skakbladet 1933



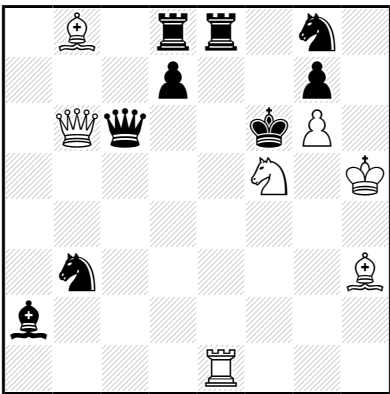


#2 (11+6) C+

- 1.Fg3!** [2.Df1†]
 1...Cd~ 2.Fd5†
 1...Cd6! 2.Dxç7†
 1...Cç3! 2.Ca3†
 1...Cf6! 2.Cé5†
 1...Cd7 2.Dxé6†

- Anti-Gamage
- Gamage
- Correction noire
- Mat par clouage
- Déclouage direct
- Déclouage indirect

**Frederick GAMAGE
 StrateGems 2003**



#2 (7+9) C+

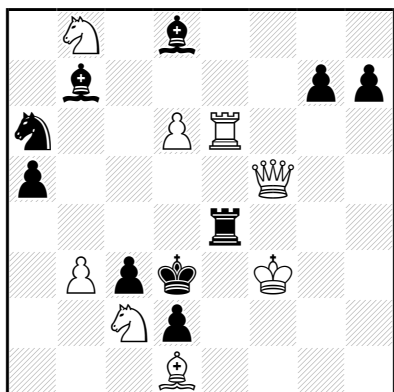
- 1.Cé7!** [2.Cd5†]
 1...Cb~ 2.Dd4†
 1...Cç5! 2.Db2†
 1...d5 2.Df2†
 1...Cxé7 2.Fé5†
 1...Txé7 2.Tf1†
 1...d6 2.Té6†

- Gamage
- Umnov (défense)
- Clé de sacrifice
- Mat par clouage

1...çxb5 2.Cd5†

Correction noire
Somov B2
Gamage
Demi-clouage noir
Mat par double clouage

Karl A.K. LARSEN
Skakbladet 1942
1° Prix



≠3 (8+10) C+

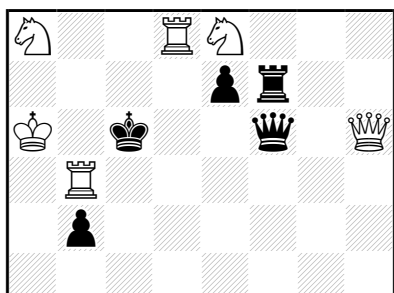
1.Cd7? [2.Cé5†]
mais 1...Ff6!

1.Cxa6? [2.Cç5†]
mais 1...Fb6!

1.Rg2! [2.Df3+ Té3 3.Txé3†]
1...Fg5 2.Cxa6 [3.Cç5†] Fé3/Fxa6 3.Df1/Dxé4†
1...Fb6 2.Cd7 [3.Cé5†] Fd4 3.Db5†

Mat par clouage
Déclouage direct
Romain
Gamage

Max BENNINGER
Suisse - Danemark, Schweiz. Arbeiter-Schachkalender 1947
3° Place





±2 (6+6) C+

1.Cb6! [2.Tç8†]

1...é5 2.Dxç1†

1...é6 2.Td6†

1...Ff4 2.Dh1†

Déclouage direct

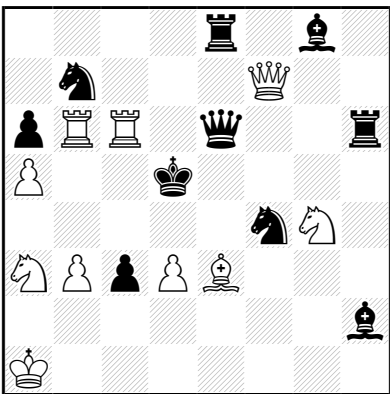
Bivalve

Ouverture de ligne noire par les Noirs

Gamage

Hugo KNUPPERT

Main Post 1977



±3 (10+10) C+

1.Cb1? [2.Cxç3†]

mais 1...Cé2!

1.Cç2? [2.Cb4†]

mais 1...Cxd3!

1.Tç4! [2.Td4+ Rç5 3.b4†]

1...Cxd3 2.Cb1 [3.Cxç3†] Fé5 3.Df3†

1...Cé2 2.Cç2 [3.Cb4†] Fd6 3.Dxb7†

Déclouage direct

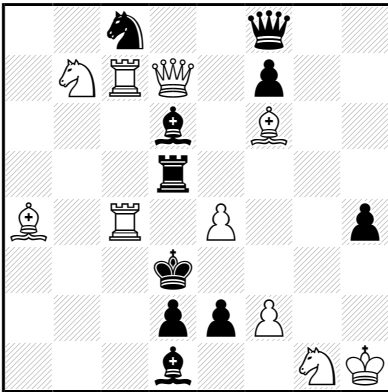
Banny

Gamage

Dresde

o

Henry FUNK
version Hugo KNUPPERT
Good Companion 1923 (v)

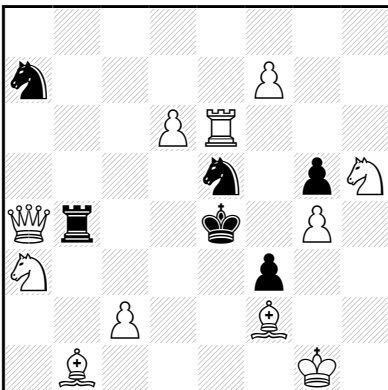


#2 (10+10) C+

- 1.Tb4!** [2.Tç3‡]
 1...Fç5 2.Db5‡
 1...Tç5 2.Cxç5‡
 1...Té5 2.Dh3‡
 1...Fé5 2.Fb5‡
 1...Td4 2.Txd4‡
 1...Fxç7,Fxb4 2.Dxd5‡

Demi-clouage noir
 Clé de sacrifice
 Mat par clouage
 Déclouage direct
 Gamage

Giorgio GUIDELLI
L'Illustrazione Italiana 1914



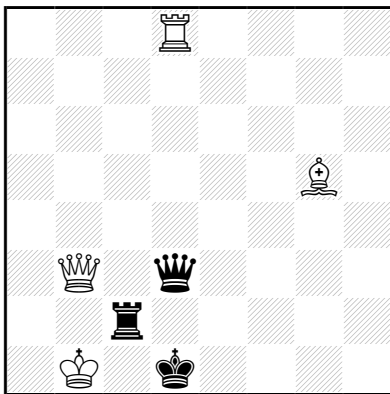
#2 (11+6) C+

- 1.f8=C!** blocus
 1...Ca~ 2.Dç6‡
 1...Cb5! 2.Da8‡
 1...Txa4 2.ç4‡

1...Td4 2.Dxd4†
1...Tç4 2.Dxç4†
1...Rd5 2.Cf6†

Capture d'une pièce clouante par la pièce clouée
Batterie blanche
Captures réciproques
Mat par clouage
Déclouage direct
Clé de promotion
Gamage
Correction noire

Giorgio GUIDELLI Good Companion 1914

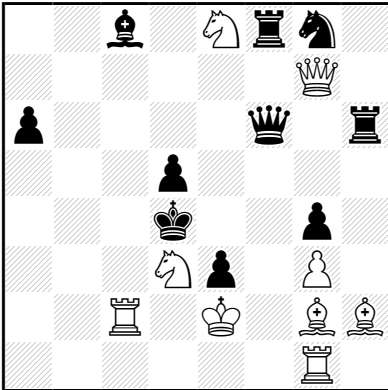


≠2 (4+3) C+

1.Fh4! [2.Dxç2†]
1...Dd2 2.Df3†
1...Ré2,Rd2 2.Dxd3†

Mouvement Pelle
Mat par clouage
Auto-déclouage indirect
Clé give and take
Gamage

André SIMONET
après Hugo KNUPPERT
diagrammes 1990
1° Recommandé



#3 (9+10) C+

1.Ta1? [2.Ta4♯]

mais 1...Fd7!

1.Td1! [2.Cç5+, Cf4+]

1...Fb7 2.Ta1 [3.Ta4♯] Fç6 3.Da7♯

1...Cé7 2.Fg1 [3.Fxé3♯] Cf5 3.Dxg4♯

1...Ff5 2.Dç7 [3.Dç3, Dç5♯] Dç6/Fxd3+ 3.Dé5/Txd3♯

Romain

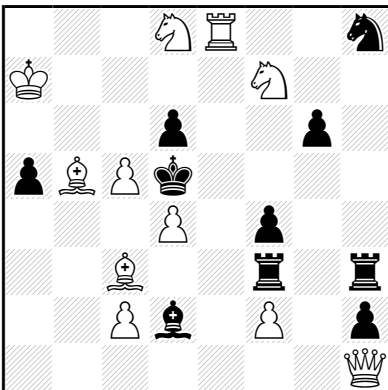
Dresde

Gamage

Déclouage direct

Option

Milan VELIMIROVIC
Mezija 1996



#3 (11+10) C+

1.Da1? [2.Da2♯]

mais 1...Txç3!

1.Df1? [2.Dç4, Fç4, Fç6♯]

o

mais 1...Td3!

1.Cç6! [2.Fxd2 [3.ç4†]]

1...Fxc3 2.Da1 [3.Da2†] F~/Fxd4/dxç5 3.ç4/Dxd4/Té5†

1...Fé3 2.Df1 [3.Dç4†]

1...Cxf7 2.Cé7+ Ré4/Ré6 3.Fd3/d5†

Switchback

Sacrifice blanc

Captures réciproques

Mat par clouage

Auto-déclouage indirect

Déclouage direct

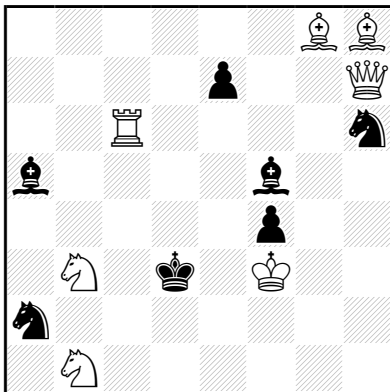
Gamage

Logique

Wieland BRUCH

Schach-Report 1992

3° Prix



≠2

(7+7) C+

b) ♖f5

a)

1.Ca3? [2.Fç4†]

mais 1...é5!

1.Ca1! [2.Fç4†]

1...é5 **a** 2.Td6† **A**

1...é6 **b** 2.Dd7† **B**

1...Cxc8,Cf7 2.Dxf5†

1...Fé4+ 2.Dxé4†

b)

1.Ca1? [2.Fç4†]

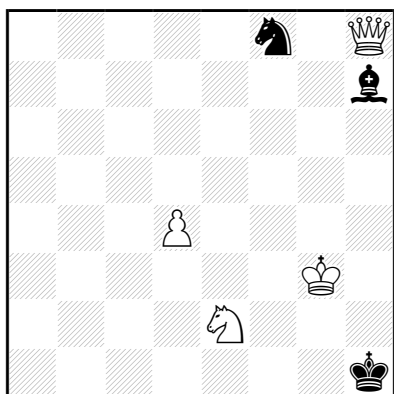
mais 1...é6!

o

1.Ca3! [2.Fc4†]
 1...é5 **a** 2.Dd7† **B**
 1...é6 **b** 2.Td6† **A**
 1...Cxc8,Cf7 2.Dxf5†

Mats (suites) échangé(e)s
 Gamage

Roald BUKNE
Tidskrift för Schack 1946



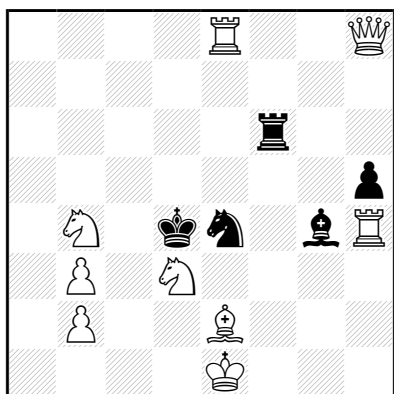
≠2 (4+3) C+

1...Cg6 2..Da8†

1.d5! blocus
 1...C~ 2.Dxh7†
 1...Cg6! 2.Da1†

Gamage
 Correction noire
 Coin à coin (diagonal)
 Mutate

Luigi CERIANI
L'Italia Scacchistica 1928



≠2 (9+5) C+

1.Dg7! blocus

1...Fé6 2.Da7‡

1...Ff5,Ff3 2.Dg1‡

1...C~ 2.Dxf6‡

1...Ré3 2.Cç2‡

(1...F~ 2.Thxé4,Téxé4‡

1...Cd6 2.Da7,Dxf6‡)

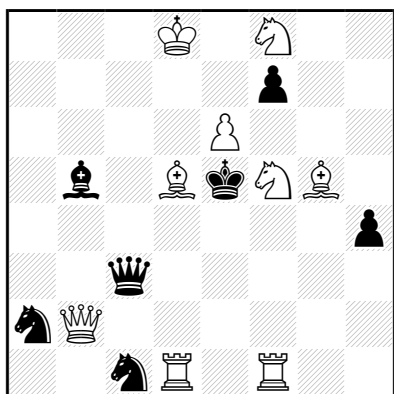
Gamage

Mat par clouage

Auto-clouage indirect

Déclouage direct

Henry D'oyly BERNARD
The Chess Amateur 1906



‡2

(9+7) C+

1.Fh1! [2.Td5‡]

1...Fd3 2.Dh2‡

1...Fç4,Fç6 2.Db8‡

1...fxé6 2.Cg6‡

1...Cd3 2.Dé2‡

1...Dd4+ 2.Dxd4‡

1...Cb4 2.Dxç3‡

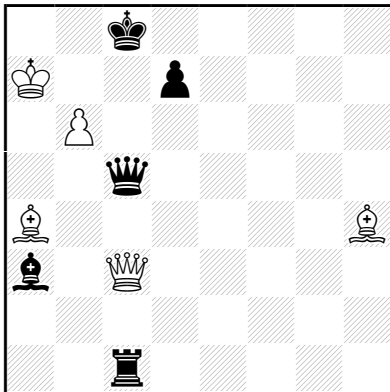
Gamage

Mouvement Pelle

o

Déclouage direct
Exposition du Roi blanc à l'échec

Arthur R. GOODERSON
Time & Tide 1954



≠2 (5+5) C+

1.Fb5! [2.Fa6‡]

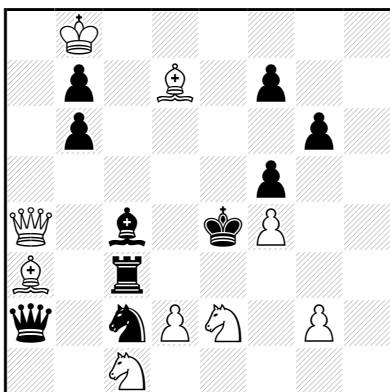
1...d5 2.Dh3‡

1...d6 2.Dh8‡

1...Dç7+ 2.b7‡

Gamage
Mouvement Pelle
Guidelli
Mat par clouage
Déclouage direct

Oliver MAAS
Problemesis 2005



≠3 (9+10) C+

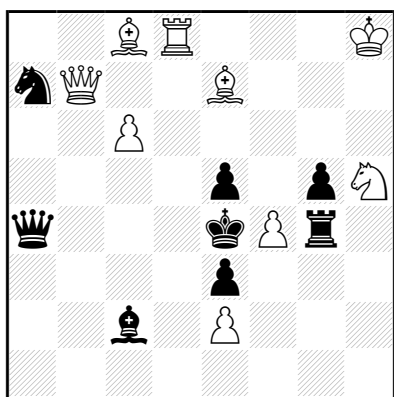
1.Fç8! [2.Fxb7‡]

o

1...Td3,Cb4,Cé3 2.Fxb7+ Td5,Cd5,Fd5/Cç6+ 3.Dé8/Fxç6‡
 1...Cd4 2.Fxb7+ Fd5/Cç6+ 3.Dxd4/Fxç6‡
 1...Rd5 2.Fxb7+ Ré6 3.Dç6‡

Echecs croisés
 Demi-clouage noir
 Mat par clouage
 Auto-clouage direct
 Auto-clouage indirect
 Auto-déclouage indirect
 Déclouage direct
 Gamage

Wieland BRUCH
Freie Presse 1996
1° Prix



‡2 (9+8) C+

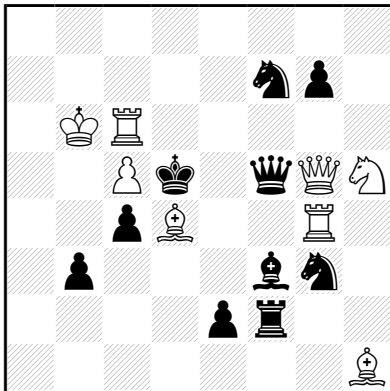
1.Fé~? [2.Dh7‡]
 mais 1...Dxç6!

1.Ff6? [2.Dh7‡]
 mais 1...gxf4!

1.Fç5! [2.Dh7‡]
 1...Txf4 2.Cg3‡
 1...gxf4 2.Cf6‡
 1...éxf4 2.Dé7‡
 1...Dxç6 2.Db4‡

Gamage
 Correction blanche
 Auto-blocage
 Captures multiples d'une pièce blanche
 Option
 Défenses sur la même case

Helmer TERNBLAD
Schackvärlden 1939

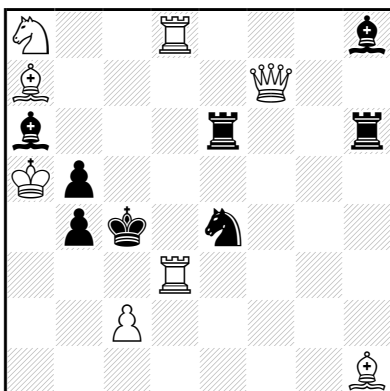


≠2 (8+10) C+

1.Fxg7! [2.Td4‡]
 1...Cé4 2.Cf4‡
 1...Fé4 2.Dd2‡
 1...Dé5 2.Cf6‡
 1...Cd6,Cé5 2.T(x)d6‡

Gamage
 Mouvement Pelle
 Somov B2
 Mat par clouage
 Auto-déclouage indirect

Ivar ERIKSSON
Schackvärlden 1941



±2

(8+8) C+

1.Té3? [2.Df1±]
mais 1...Cç3!

1.Fé3? [2.Cb6±]
mais 1...Fd4!

1.Tb3! [2.Df1±]
1...Thf6 2.Td4±
1...Ff6,Txh1,Th2,Th3 2.Dxé6±
1...C~ 2.Fd5±
1...Cd6! 2.Dç7±
1...Cç3! 2.Txb4±
1...Cç5! 2.Cb6±
1...Cf6! 2.Td4±

Anti-Gamage

Gamage

Somov B2

Auto-blocage

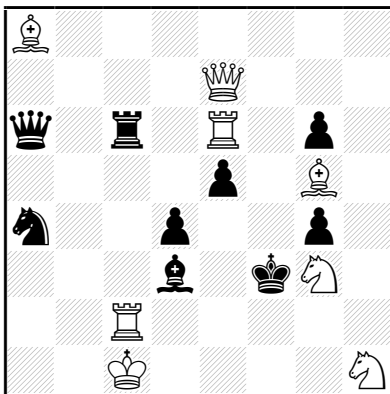
Mat par clouage

Déclouage direct

Déclouage indirect

Grimshaw

Sven EKSTROM Schackvärlden 1941



±2

(8+9) C+

1.Da3! [2.Tf6±]
1...é4 2.Df8±
1...Cç3 2.Tf2±
1...Dxa8,Dç8,Db7 2.Dxd3±

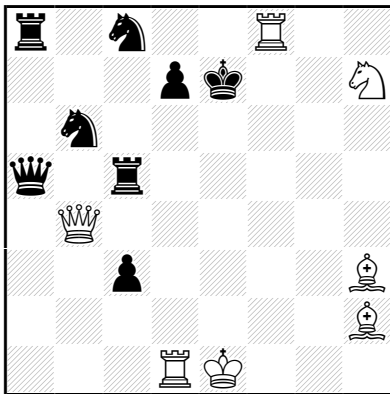
Gamage

Mat par double clouage

Auto-déclouage indirect

Clouage direct

Sven CEDER
Schackvärlden 1941

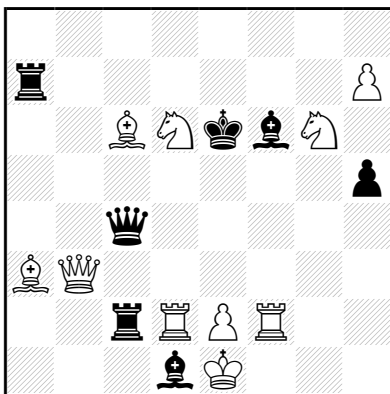


≠2 (7+8) C+

- 1.Fç7!** [2.Fd8‡]
 1...d5 2.Dh4‡
 1...Cd6,Ca7 2.F(x)d6‡
 1...Cç4,Ca4 2.Txd7‡
 1...Cd5 2.Dé4‡

Correction noire
 Gamage
 Déclouage direct

Karl A.K. LARSEN
Skakbladet 1940
2° Prix



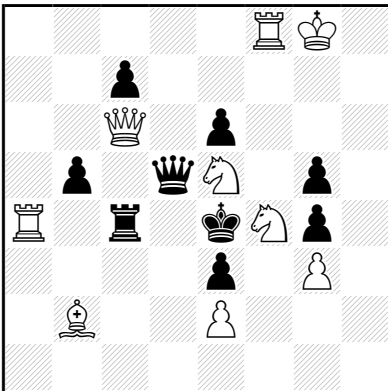
≠2 (10+7) C+

- 1.Cé8!** [2.Txf6‡]
 1...Tf7,Ff~ 2.Td6‡
 1...Fé7 2.Cg7‡
 1...Fç3 2.Dxç4‡
 1...Fd4 2.Dh3‡
 1...Fé5 2.Cf8‡

Correction noire

Gamage
 Auto-blocage
 Mats miroir
 Clouage direct
 Clé ampliative

David HJELLE
dédié à B. Blikeng
Arbejder Skak 1951

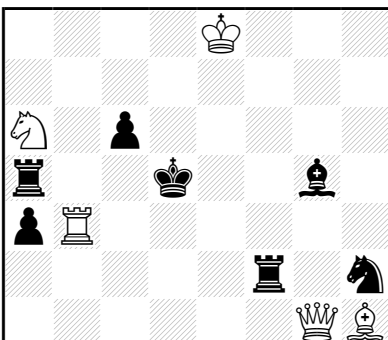


≠2 (9+9) C+

1.Cf7! [2.Cxg5±]
 1...é5 2.Dg6±
 1...Td4 2.Dç2±
 1...Rf5 2.Cd6±

Mouvement Pelle
 Echec double
 Batterie blanche
 Mat par clouage
 Déclouage direct
 Clé ampliative
 Gamage

Tore ANDERSSON
Arbejder Skak 1954

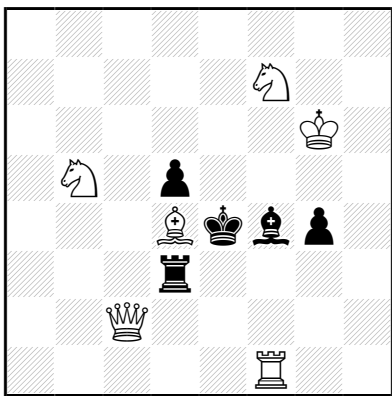




≠2 (6+9) C+

1.Rd7! [2.Té5‡]
 1...Fé3 2.Da2‡
 1...Cé3 2.Dd2‡
 1...Ff6,Ff4 2.Dg8‡
 1...Cf4 2.Dxg5‡
 Déclouage direct
 Gamage

**Adelchi RICCIARDI
 Die Schwalbe 1935**



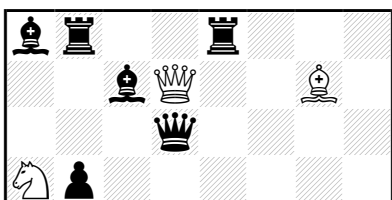
≠2 (6+5) C+

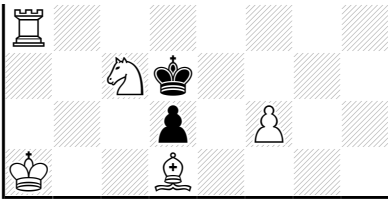
1.Fç5? [2.Cç3‡]
 mais 1...d4!

1.Fg1! [2.Cç3‡]
 1...Fé3 2.Dg2‡
 1...Fé5 2.Cg5‡
 1...Fd2 2.Cbd6‡
 1...d4 2.Dç6‡

Mat par clouage
 Déclouage direct
 Ellerman-Makihovi
 Gamage

**Raphaël KOFMAN
 Adevărul Literar si Artistic 1928
 3° Prix**



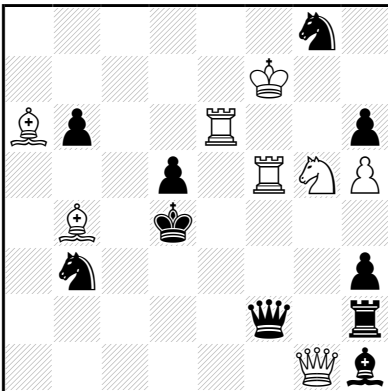


≠2 (8+8) C+

- 1.Cé4!** [2.Cç5†]
 1...Té5 2.Dh3†
 1...Txé4,Fxé4 2.Ta3†
 1...Fb6 2.Dxb5†
 1...Fd5 2.Td4†
 1...Dd4+ 2.Dxd4,Txd4†

- Auto-blocage
- Clé de sacrifice
- Mat par clouage
- Déclouage direct
- Anti-Reversal-menace
- Exposition du Roi blanc à l'échec
- Gamage

Gustave J. NIETVELT
Associazione Scacchistica Italiana 1928
3° Prix

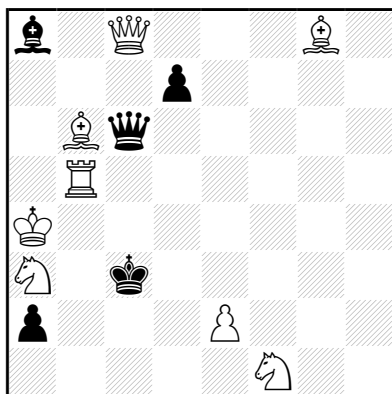


≠2 (8+10) C+

- 1.Tf3!** [2.Dg4†]
 1...Dxg1,Cf6 2.Td3†
 1...Cd2 2.Da1†
 1...Fg2 2.Dxf2†
 1...Tg2 2.Tf4†
 1...Fxf3 2.Cxf3†
 1...Dé3 2.Dxé3†
 1...Cç5 2.Fç3†

Chernet
 Capture d'une pièce clouante par la pièce clouée
 Clé de sacrifice
 Captures réciproques
 Mat par clouage
 Déclouage direct
 Gamage
 Gamage bicolore
 Grimshaw

Hrvoje BARTOLOVIC
Freie Presse 1991
Recommandé



#2 (8+5) C+

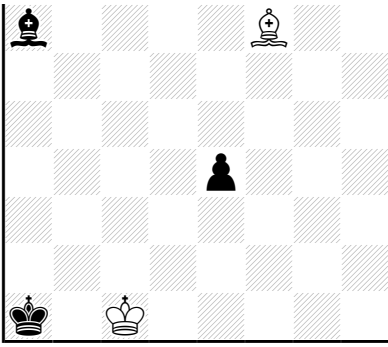
1.Fxa2? blocus
 1...d5 2.Dh3‡
 1...d6 2.Dh8‡
 mais 1...Fb7!

1.Dç7! [2.Dé5‡]
 1...d5 2.Dg3‡
 1...d6 2.Dg7‡
 1...Dç4+ 2.Dxç4‡
 1...Dç5 2.Dxç5‡
 1...Dxç7 2.Tb3‡

Capture d'une pièce clouante par la pièce clouée
 Captures réciproques
 Mats miroir
 Déclouage direct
 Mats (suites) changé(e)s
 Gamage

Lev GUGEL
Die Schwalbe 1931





≠2

(3+4) C+

1.Rç2! blocus

1...C~ 2.Dxa7‡

1...Cb6! 2.Dh8‡

1...é3 2.Dh1‡

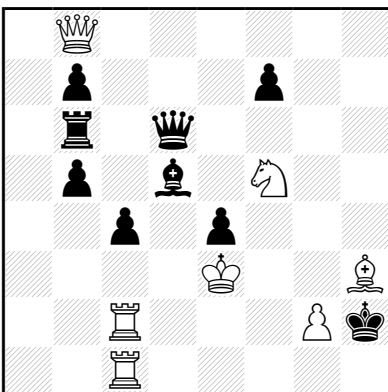
Déclouage direct

Coin à coin (diagonal)

Correction noire

Gamage

Febus FRANKEL
Die Schwalbe 1932



≠2

(7+9) C+

1.Fg4! [2.g3‡]

1...Fé6 2.Dh8‡

1...Fç6 2.Dxd6‡

1...Dg3+ 2.Dxg3‡

1...Df4+ 2.Dxf4‡

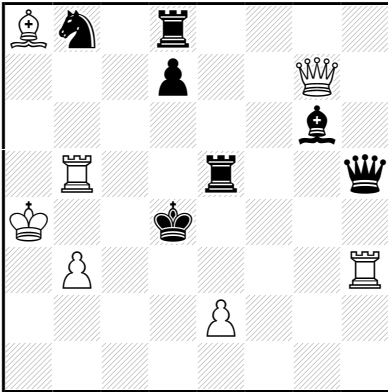
Mouvement Pelle

Batterie blanche

o

Anti-Goethart
Gamage

Harry ROSENKILDE
Essener Volkswacht 1929



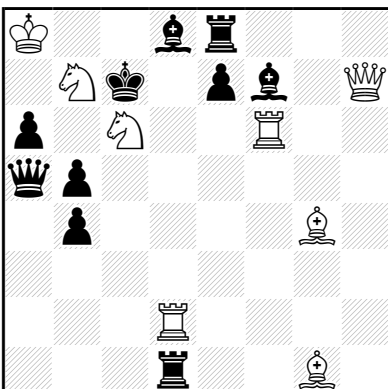
#2 (7+7) C+

1.Fg2? [2.Td5†]
mais 1...Fé4!

1.Fh1! [2.Td5†]
1...d5 2.Da7†
1...Fé4 2.Dg1†
1...Ff7,Fd3 2.Td3†
1...Dxh3,Df3 2.Dxé5†

Umnov (défense)
Mat par clouage
Déclouage direct
Coin à coin (diagonal)
Anti-Reversal
Anti-Reversal-menace
Gamage

Pyotr ZABIROKHIN
Zadachi i Etyudy 1999



≠2

(8+10) C+

1.Ca7! [2.Tç6‡]

1...Fd5 2.Fh2‡

1...Fé6 2.Dh2‡

1...éxf6 2.Tç2‡

1...é6 2.Dç2‡

1...Tç1 2.Td7‡

1...Db6 2.Fxb6‡

Demi-clouage noir

Mat par clouage

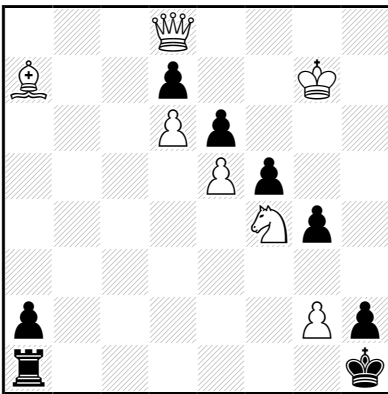
Déclouage direct

Gamage

Pickabish

Byron ZAPPAS

Probleemblad 1960 (v)



≠4

(7+8) C+

1.g3! [2.Da8‡]

1...Tf1 2.Da8+ Tf3 3.Ff2 a1=~ 4.Dxa1‡

1...Té1 2.Da8+ Té4 3.Fé3 a1=~ 4.Dxa1‡

1...Td1 2.Da8+ Td5 3.Fd4 a1=~ 4.Dxa1‡

1...Tç1 2.Da8+ Tç6 3.Fç5 a1=~ 4.Dxa1‡

Clouage direct

Déclouage direct

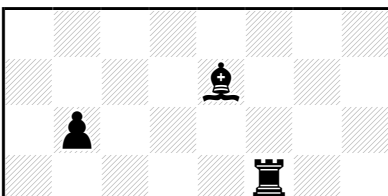
Duel Blanc-Noir

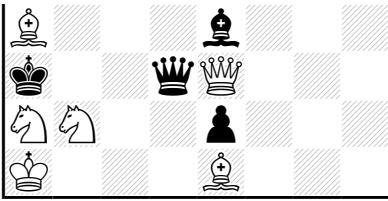
Gamage

Allan THORSSON

Fédération Suédoise des Echecs 1932

2° Prix



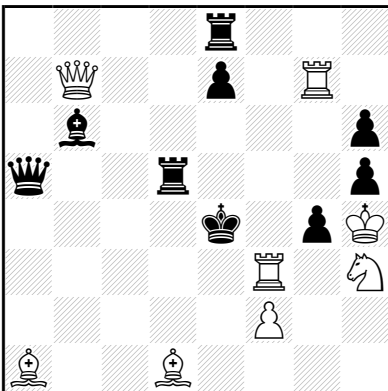


≠2 (6+7) C+

- 1.Fç2!** [2.Cç4‡]
 1...Fd5 2.Dxé7‡
 1...b5 2.Da7‡
 1...Tç5,Ff6 2.Fb4‡
 1...Db3 2.Dxb3‡
 1...Dç3 2.Dxç3‡

Mouvement Pelle
 Mat par clouage
 Clouage direct
 Déclouage direct
 Gamage

Eigil PEDERSEN
Concours National, Dansk Arbejder Skak Forbund 1932
2° Prix

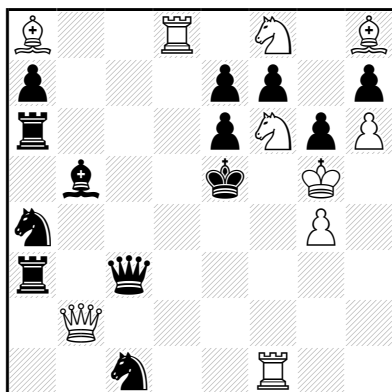


≠2 (8+9) C+

- 1.Tg5!** [2.Té5‡]
 1...Fd4 2.Db1‡
 1...és 2.Dh7‡
 1...hxc5+ 2.Cxc5‡
 1...gxf3 2.Fç2‡
 1...Fxf2+ 2.Cxf2‡

1...Fç7, Fé3 2. Té3†
 1...Dxa1, Dç3 2. Dxd5†
 Echecs croisés
 Clé de sacrifice
 Mat par clouage
 Déclouage direct
 Gamage

Erio SALARDINI
T.T. L'Echiquier 1935
1° Prix

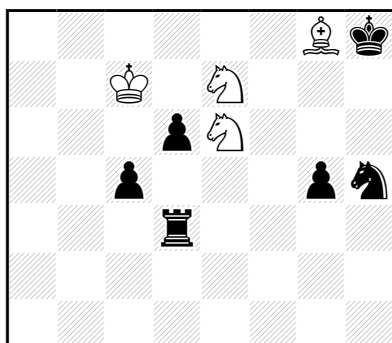


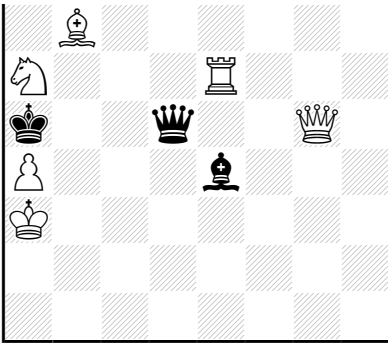
≠2 (10+13) C+

1.Tfd1! [2.C6d7†]
 1...Fd3 2.Dh2†
 1...Cd3 2.Dé2†
 1...Tç6 2.C8d7†
 1...Fç6 2.Db8†
 1...éxf6+ 2.Fxf6†
 1...Dd4 2.Dxd4†

Anti-Somov A1
 Mouvement Pelle
 Echec double
 Batterie blanche
 Déclouage direct
 Gamage

A. WIEHES
Mémorial A. Ursic 1929





≠2

(6+4) C+

1.Cb4? [2.Ta6‡]

mais 1...Fd3!

1.Cb8! [2.Ta6‡]

1...Fd3 2.Dd2‡

1...Dç5+ 2.Dxç5‡

1...Cd6 2.Dd8‡

1...Cb6 2.Cç6‡

Gamage

Mouvement Pelle

Somov B2

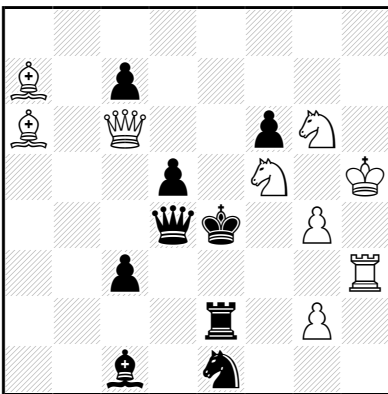
Mat par clouage

Déclouage direct

Josef MIKULCAK

Dortmunder Zeitung 1938-VII

Prix



≠2

(9+9) C+

1.Da4! [2.Dxd4‡]

1...D~,Fé3 2.Cg3‡

1...Dç4! 2.Dé8‡

1...Cç2 2.Fd3‡

o

1...Cf3 2.gxf3†
 1...Td2 2.Té3†
 1...ç5 2.Cd6†

Capture d'une pièce clouante par la pièce clouée

Somov B2

Somov B1

Clé de sacrifice

Captures réciproques

Mat par clouage

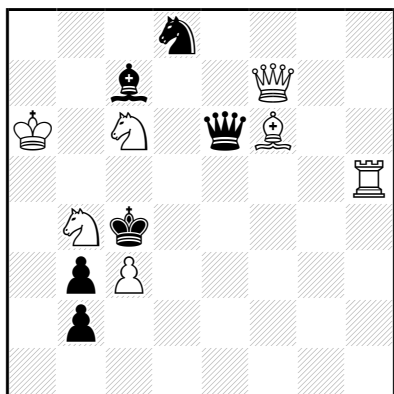
Clouage direct

Déclouage direct

Rudenko

Gamage

Hermann ALBRECHT
Karl HEUBLEIN
Neue Leipziger Zeitung 1936-III
Prix



#2

(7+6) C+

1.Fd4! [2.Tç5†]

1...Fé5 2.Df1†

1...Fd6 2.Ca5†

1...Fb6 2.Cé5†

1...Cb7 2.Dxé6†

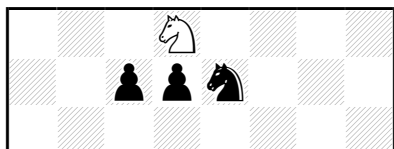
1...Dd5 2.Dfi,Dxd5†

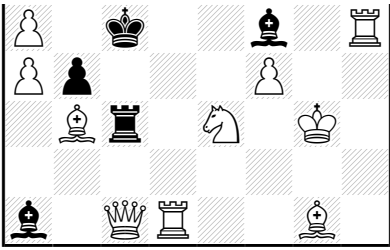
Mat par clouage

Déclouage indirect

Gamage

Fritz KARGE
Die Schwalbe 1941



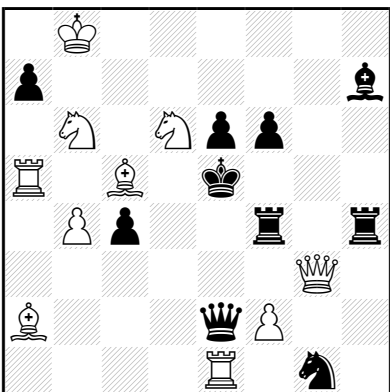


±2 (11+8) C+

- 1.Fd5!** [2.Cb7‡]
- 1...Fd3 2.Cç4‡
- 1...b3 2.Da3‡
- 1...Cxd5 2.Txd5‡

Batterie blanche
 Clé de sacrifice
 Déclouage indirect
 Clé ampliative
 Goethart
 Gamage

Otto STRERATH
Die Schwalbe 1947



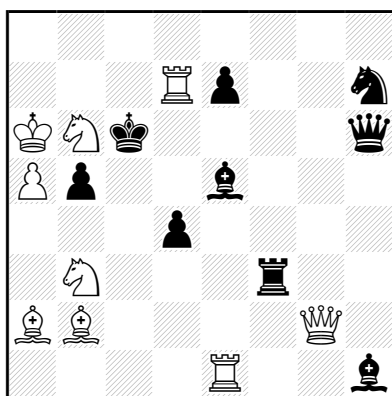
±2 (10+10) C+

- 1.Rç7!** [2.Fé3‡]

o

1...Dé4, Fé4 2.Dç3†
 1...ç3 2.Cd7†
 1...f5 2.Dg7†
 1...axb6 2.Fxb6†
 Anti-Goethart
 Gamage
 Schiffmann (parade)
 Mouvement Pelle
 Batterie blanche
 Mat par clouage
 Déclouage direct

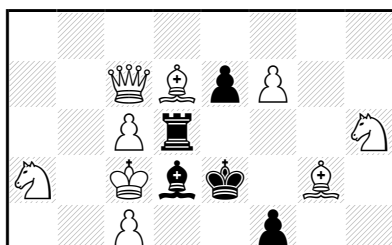
Iver PEDERSEN
T.T. Skakbladet 1942
2° Prix

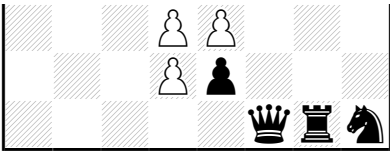


≠3 (9+9) C+
1.Fa3! [2.Cxd4+ Fxd4 3.Fd5†]
 1...Dd6 2.Tç1+ Dç5 3.Txç5†
 1...Dd2 2.Cxd2 [3.Tç1, Fd5†]
 1...Dé3 2.Dç2+ Dç3 3.Dé4†
 1...Df4 2.Dg8 [3.Da8, Dd5†]
 1...é6 2.Txé5 [3.Tç5, Cxd4†]
 1...b4 2.Dg8 [3.Da8, Dç4, Dd5†]

Gamage
 Sacrifice blanc
 Auto-clouage direct
 Déclouage direct

Michael SCHNEIDER
Die Schwalbe 1948
9° Mention d'Honneur





≠2 (12+9) C+

1.Db8! [2.Db2‡]

1...Fé6 2.Dh8‡

1...Fxç6 2.Cxç6‡

1...Fg2 2.Cg4‡

1...Ff3, Da1, Db1, Dç1 2.éxf4‡

1...Fé4 2.d4‡

1...Fxç4 2.Cxç4‡

1...Fxf7 2.Cxf7‡

Anti-Gamage

Gamage

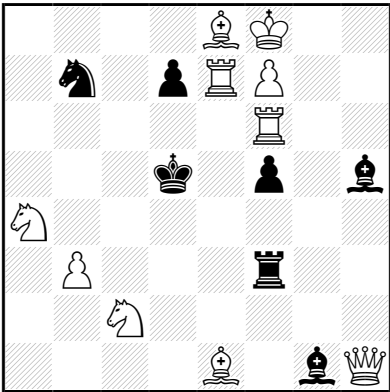
Etoile de Fou

Chasse

Mat par clouage

Déclouage direct

Heinrich JAMBON Die Schwalbe 1948



≠2 (10+7) C+

1.Fb4? [2.Cç3‡]

1...Cd6 2.Txd6‡

mais 1...Fd4!

1.Fç3? [2.Té5, Cb4‡]

mais 1...Fç5!

1.Fg3! [2.Té5‡]

1...Fç5 2.Cç3‡

1...Fd4 2.Cb4‡

1...f4 2.Dxh5‡

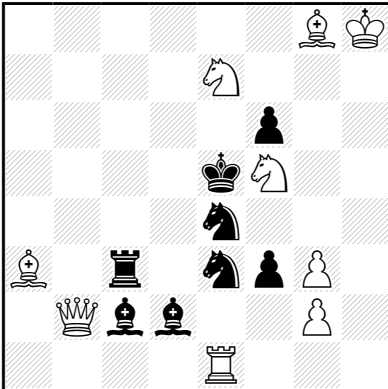
1...d6 2.Txf5‡

1...Cd6 2.Txd6‡

Auto-blocage

Mat par clouage
 Option
 Gamage
 Auto-obstruction

Gerhard LATZEL
Die Schwalbe 1949

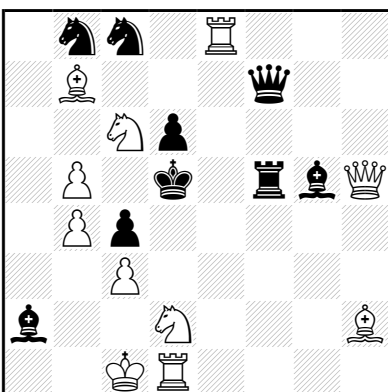


≠2 (9+8) C+

- 1.gxf3! [2.f4‡]
- 1...C3~, C4~ 2.Fd6‡
- 1...Cxf5! 2.Cç6‡
- 1...Cç5! 2.Db8‡
- 1...Cç4! 2.Db5‡

Mat par clouage
 Auto-clouage indirect
 Déclouage direct
 Gamage
 Correction noire du 3° degré

Eliahu FEIGIN
Johann J.P.A. SEILBERGER
Palestine Post 1947-48
3° Prix



≠2 (11+9) C+

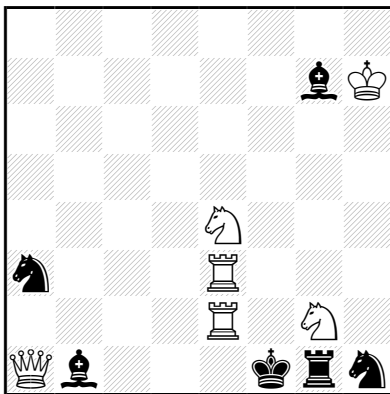
- 1...Ff4 2.Df3‡

o

1.Dg6! [2.Cé7‡]
 1...Ff4 2.Dg2‡
 1...Tf4 2.Cé4‡
 1...Ff6 2.Dxf7‡
 1...Tf6 2.Dé4‡
 1...Fxd2+ 2.Txd2‡
 1...Df6,Dxg6 2.Cxb8‡
 1...Cxç6 2.Fxç6‡
 1...Dxb7 2.Dé6,Dxf5‡

Anti-Somov A1
 Roels
 Echec double
 Batterie blanche
 Captures réciproques
 Auto-clouage direct
 Défenses sur la même case
 Gamage

James QUAH
The Problemist 2004
Recommandé



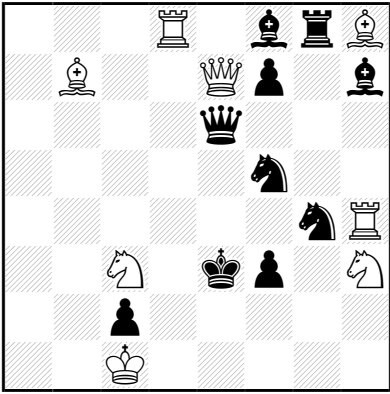
≠2 (6+6) C+

1...Txg2 2.Té1‡
 1...Cç2 2.Cd2‡

1.Td2! [2.Té1‡]
 1...Cf2 2.Txf2‡
 1...Txg2 2.Td1‡
 1...Cç2 2.Da6‡

Déclouage indirect
 Mats (suites) changé(e)s
 Gamage

Herbert AHUES
Sjakk-Nytt 1948-49
3° Mention d'Honneur



#2 (8+10) C+

1.Fa6! [2.Td3‡]

1...Cf~ 2.Fd4‡

1...Cd6 2.Da7‡

1...Cg7 2.Dg5‡

1...Cf2 2.Cd5‡

1...Cé5! 2.Té4‡

Mat par clouage

Auto-déclouage indirect

Déclouage direct

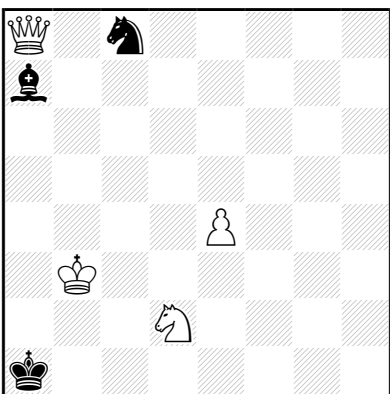
Gamage

Correction noire

Herbert RUOFF

Fédération du Palatinat 1950

3° Prix



#2 (4+3) C+

1...Cb6 2.Dh8†

1.é5! blocus

1...C~ 2.Dxa7†

1...Cb6! 2.Dh1†

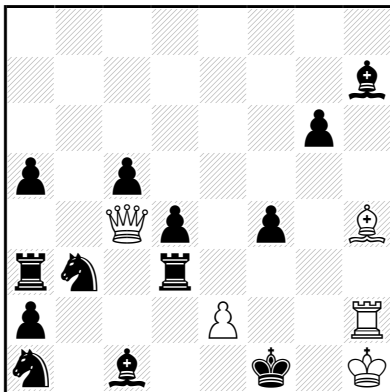
Coin à coin (diagonal)

Mutate

Gamage

Correction noire

Sergy Ivanovich TKACHENKO
Shakhmatnaya Poeziya 2004



≠2

(5+13) C+

1.é4! [2.Dxd3†]

1...fxé3 e.p. 2.Df7†

1...dxé3 e.p. 2.Dxf4†

1...Cd2 2.Dxç1†

Pape

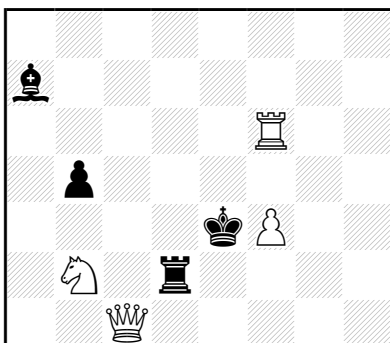
Clouage indirect

Déclouage direct

Prise en passant

Gamage

John M. RICE
Tournoi de composition rapide, Jurmala 2008
2° Prix





≠2 (7+5) C+

1.Cé3? [2.Dg2‡]
mais 1...Cd2!

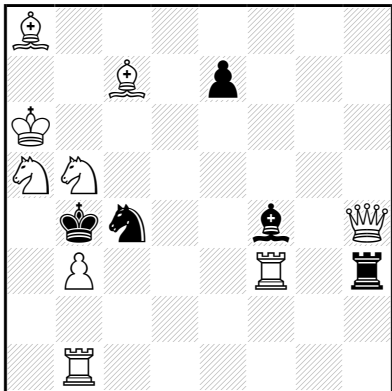
1.Cd4? [2.Dç6‡]
1...Cç3 2.Cxç3‡
mais 1...Fç5!

1.Cç1? [2.Dxd3‡]
mais 1...Fé3!

1.Cb2! [2.Dxd3‡]
1...Fé3,Rf3 2.Dg2‡
1...Fd4,Rd5 2.Dç6‡

Auto-déclouage indirect
Déclouage direct
Gamage

Antonio PIATESI L'Italia Scacchistica 1987

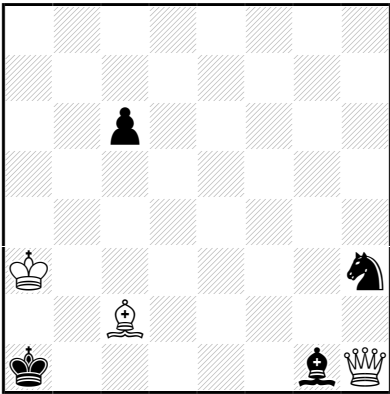


≠2 (9+5) C+

1.Tç1! [2.Txç4‡]
1...C~ 2.Cç6‡
1...Cé5! 2.Dxé7‡
1...Cé3! 2.Dé1‡
1...Cxa5! 2.Fxa5‡
1...Fxç1 2.Dxç4‡

Clé de sacrifice
Auto-clouage indirect
Déclouage direct
Gamage
Correction noire

Cornelis J. OOSTERHOLT
Good Companion 1924



≠2 (3+4) C+

1.Rb3! blocus

1...C~ 2.Dxg1‡

1...Cf2! 2.Dh8‡

1...ç5 2.Da8‡

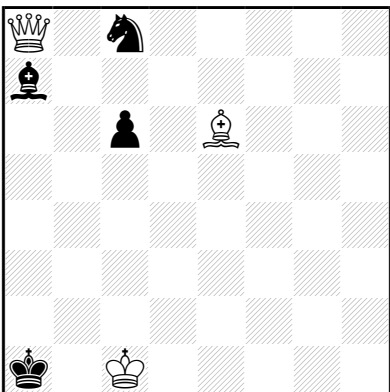
Déclouage direct

Coin à coin (diagonal)

Correction noire

Gamage

Thomas R. DAWSON
Pittsburgh Sun 1927



≠2 (3+4) C+

1.Rç2! blocus

1...ç5 2.Dh1‡

1...C~ 2.Dxa7‡

1...Cb6! 2.Dh8‡

Déclouage direct

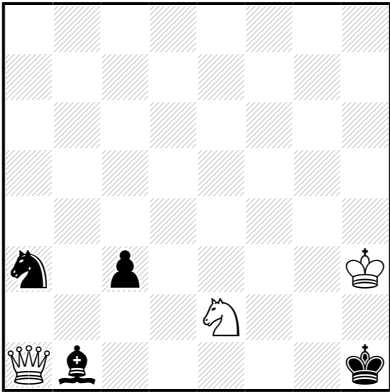
Coin à coin (diagonal)

Correction noire

Gamage

Edward BOSWELL

Svenska Dagbladet 1928



#2 (3+4) C+

1.Rg3! blocus

1...ç2 2.Dh8‡

1...C~ 2.Dxb1‡

1...Cç2! 2.Da8‡

Déclouage direct

Coin à coin (diagonal)

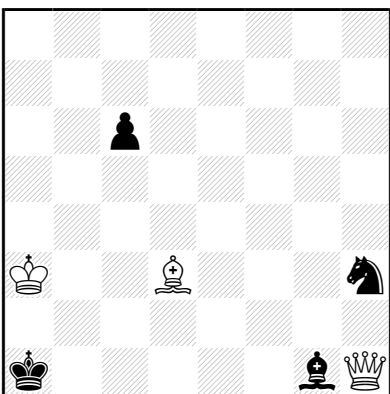
Correction noire

Gamage

Axel AKERBLOM

Edward BOSWELL

Svenska Dagbladet 1929



#2 (3+4) C+

1.Rb3! blocus

1...C~ 2.Dxg1‡

1...Cf2! 2.Dh8‡

1...ç5 2.Da8‡

Déclouage direct

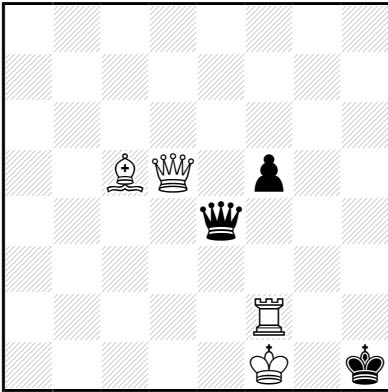
Coin à coin (diagonal)

Correction noire

Gamage

Alexandre LEBEDEV

Skakbladet 1934



≠2 (4+3) C+

1.Fd6! [2.Th2‡]

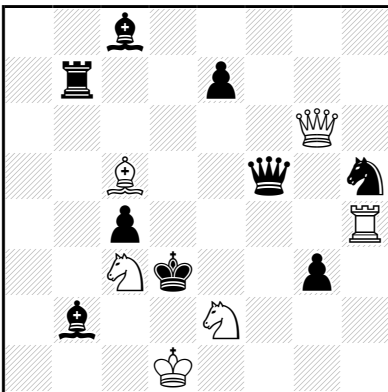
1...f4 2.Dh5‡

1...Dg2+ 2.Dxg2‡

1...Df3 2.Dxf3‡

Bristol bicolore
Mouvement Pelle
Gamage

Leon TUHAN BARANOWSKI Tecza 1931



≠2 (6+9) C+

1.Tf4? [2.Tf3‡]

mais 1...Fç1!

1.Fg1! [2.Td4‡]

1...Dé4 2.Dxé4‡

1...é5 2.Dd6‡

1...Cf4 2.Dxg3‡

1...Fxç3 2.Cç1‡

1...Td7 2.Dxf5‡

Gamage

